





“The very best thing about the area is Hyde Park, for me it is the best park in London, perfect for a stroll or run. Commuting is very convenient, Marble Arch, Edgware Road and Paddington Stations are all very close.”

The first thing that stood out about the apartment was the natural light and the amazing views. The two bedrooms are both doubles, so no compromising at all.

There is a 24 hour concierge team who are very friendly and helpful.

The refurbishment took about 6 months to finish. The kitchen appliances are Miele and the work tops are Carrerra marble. In the bathrooms I used Statuario marble tiles, Crosswater taps and Duravit sanitary ware. All high quality and hard wearing.

I love the local area and spend most of my time in Connaught Village. There is a great community feel and some fantastic independent shops and restaurants.

My favourite spots are The Duke of Kendal situated in the heart of the village, it has a fantastic atmosphere on Sunday afternoons, and Bombay Palace which is one of the finest Indian restaurants in London.

The location is also great for enjoying the best of the West End, I can walk to Selfridges and Oxford Street in approximately 15 minutes, both Marylebone High Street and Grosvenor Square are approximately 20 minutes' walk.

The very best thing about the area is Hyde Park, for me it is the best park in London, perfect for a stroll or run.

Commuting is very convenient, Marble Arch, Edgware Road and Paddington Stations are all very close.







# Porchester Place

# W2

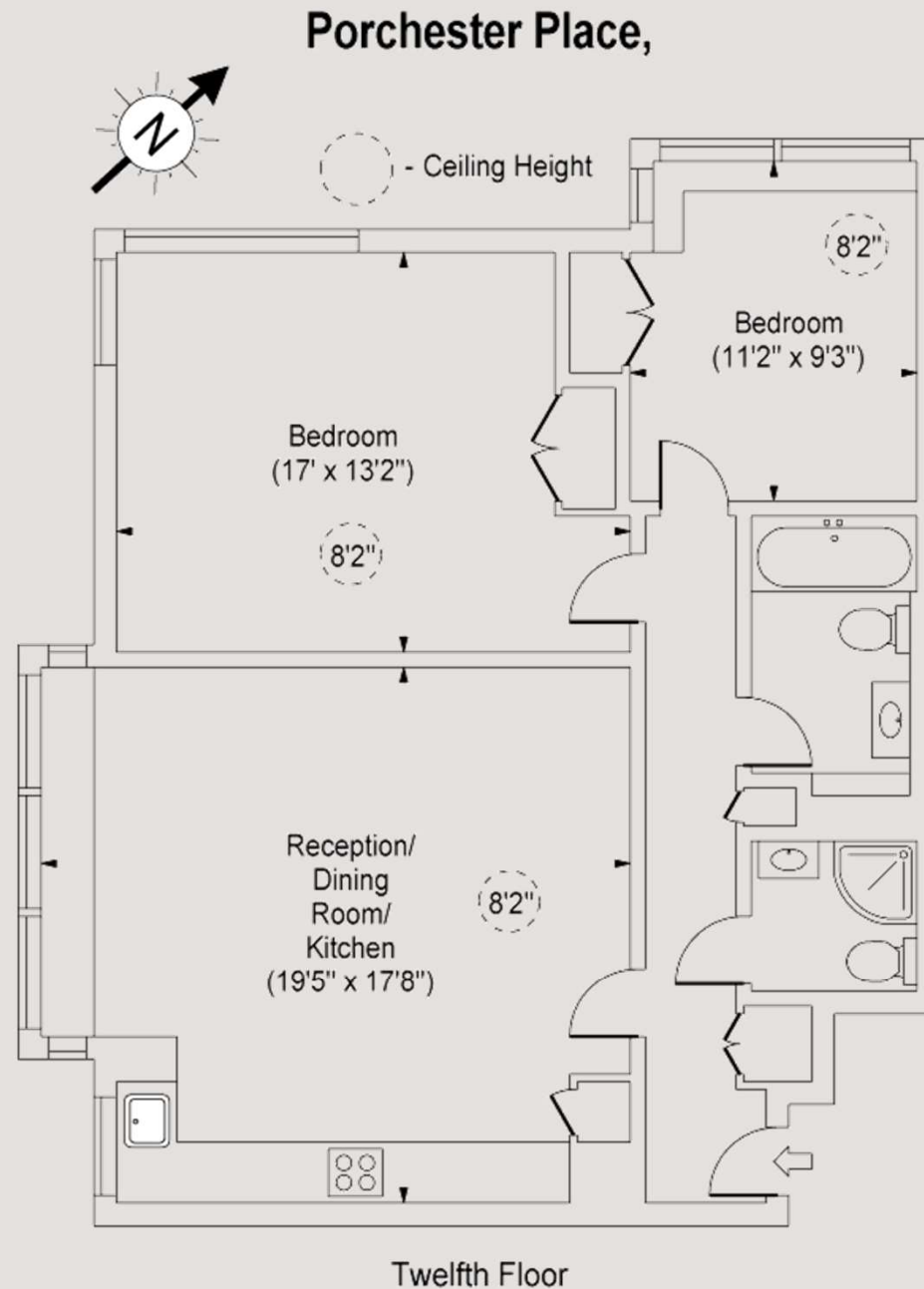
## £1.175,000

LEASEHOLD APPROX. 150 YEARS  
SERVICE CHARGE - TBC  
COUNCIL TAX BAND G

- Two Bedrooms
- Two Bathrooms
- 24 Hour Concierge
- Sky Line Views
- Lift
- EPC RATING D

0207 867 3999  
hello@storyofhome.co.uk  
www.storyofhome.co.uk

**Story  
of Home**



**Approx Gross Internal Area      859 Sq Ft - 79.80 Sq M**

Every attempt has been made to ensure the accuracy of this floor plan however measurements are approximate and for illustration purposes only.

Measured in accordance with the RICS codes of measuring practice. Not To Scale