

Story of Home

ALL CONTENT © STORYOFHOMELTD



WWW.STORYOFHOME.CO.UK



“Beyond the historic façade and building, a courtyard is the serene heart of the development. Originally the station’s parade ground, this square is today a calm and sheltered oasis.”

This impressive Victorian building sets an inspiring tone. Lovingly restored to its full splendour, Dixon Butler Mews provides a unique living environment.

Retained heritage elements include high ceilings and period features, intensifying the beauty of this Grade II listed building. Beyond the historic façade and building, a courtyard is the serene heart of the development.

Originally the station’s parade ground, this square is today a calm and sheltered oasis, carefully landscaped to offer residents a variety of relaxing and intimate outdoor areas.

Located on the first floor, this one-bedroom apartment is approximately 562 sq. ft. of living and entertainment space.

The accommodation comprises principal bedroom with a built-in wardrobe, bathroom, utility cupboard, open-plan kitchen fitted with modern appliances, and a bright reception room with large windows.

In addition, the apartment benefits from communal gardens and secure bicycle storage. Off-street underground parking is available upon separate negotiation.

Westbourne Grove & Portobello Road are close by, with the green open spaces of Paddington Recreation Ground just 0.7 miles away.

Commuting is made simple, as Westbourne Park Underground Station is just 0.3 miles away and Paddington Station is also just a few stops on the tube.





Dixon Butler Mews

W9

£575,000

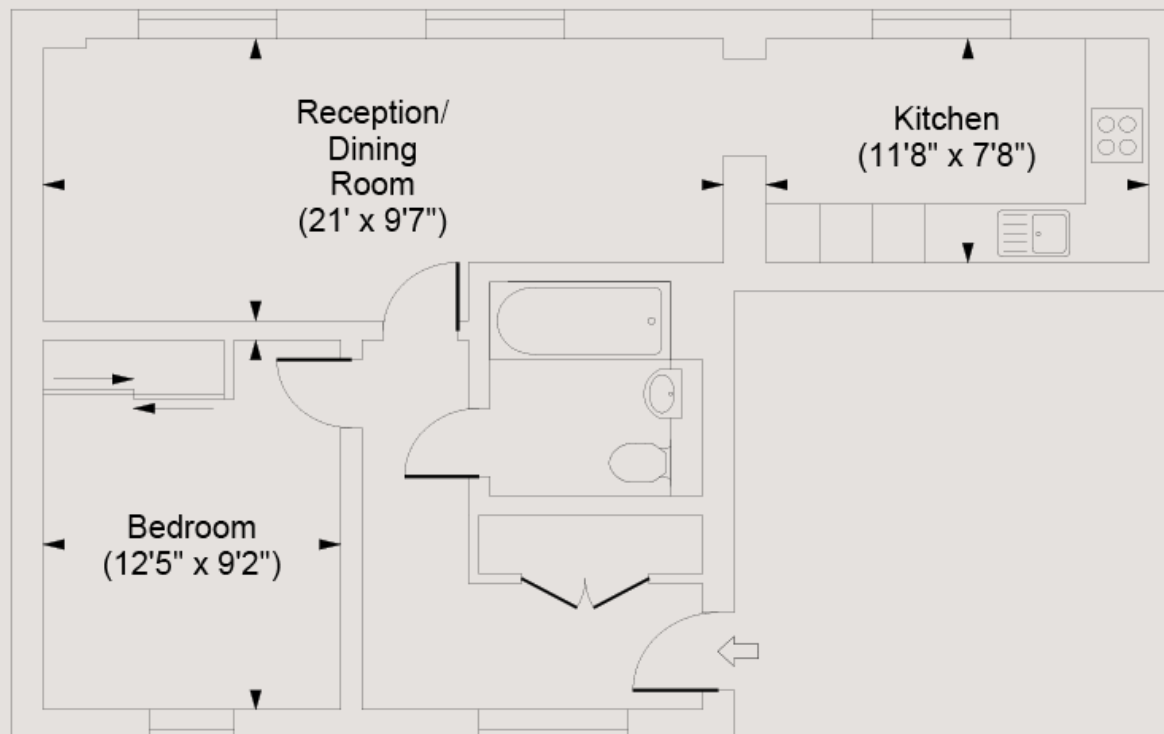
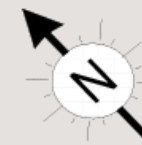
LEASEHOLD - APPROX 993 YEARS REMAINING
SERVICE CHARGE - £1,816 PA (APPROX)
GROUND RENT - 300PA
COUNCIL TAX BAND E

- Dining/Study Area
- High Ceilings
- First Floor
- Parking Available Under Separate Negotiation
- Communal Gardens
- Gated Development

0207 867 3999
hello@storyofhome.co.uk
www.storyofhome.co.uk

**Story
of Home**

Dixon Butler Mews



First Floor

Approx Gross Internal Area **562 Sq Ft - 52.21 Sq M**

Every attempt has been made to ensure the accuracy of this floor plan however measurements are approximate and for illustration purposes only.

Measured in accordance with the RICS codes of measuring practice. Not To Scale