

# HINKSEY HOUSE

NORTH HINKSEY VILLAGE, OXFORD OX2 0NA

# Hinksey House

North Hinksey Village, Oxford OX2 0NA

A stunning five/six bedroom detached family home sitting on a generous 1.24 acre plot. The house is well presented throughout and benefits from generous driveway parking, double garage, and a beautiful mature planted garden backing onto woodland. The ground floor accommodation comprises an entrance hall, drawing room, a large kitchen/family room, a separate dining room, all of which boast wonderful views of the garden. There is a large study/bedroom, a shower room and a separate utility room which leads to the double garage.

On the first floor there is a master bedroom with large ensuite bathroom, a second double bedroom also with a large ensuite bathroom, an additional three double bedrooms and a family bathroom.

To the rear of the property, is a stunning south west facing garden that features, a large patio area, carp pond, greenhouse, large lawn, mature trees to the rear and woodland area that is home to a variety of amazing wildlife.



5



3



4



Plot 383.8'/Gdn 259'

## GUIDE PRICE

**£1,750,000**

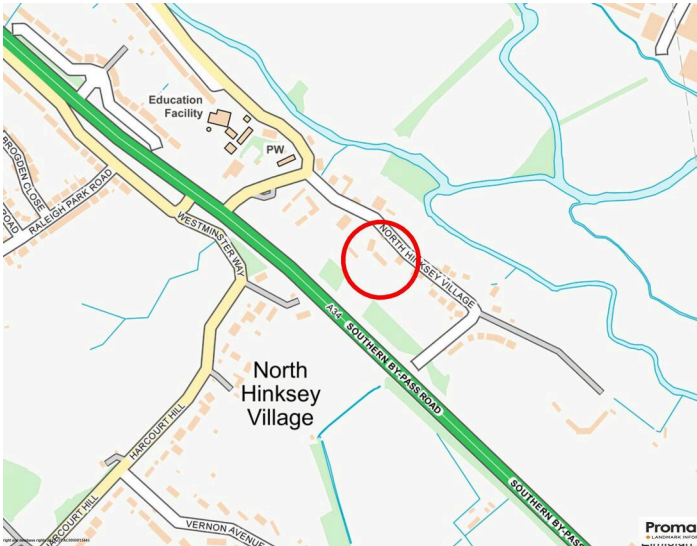
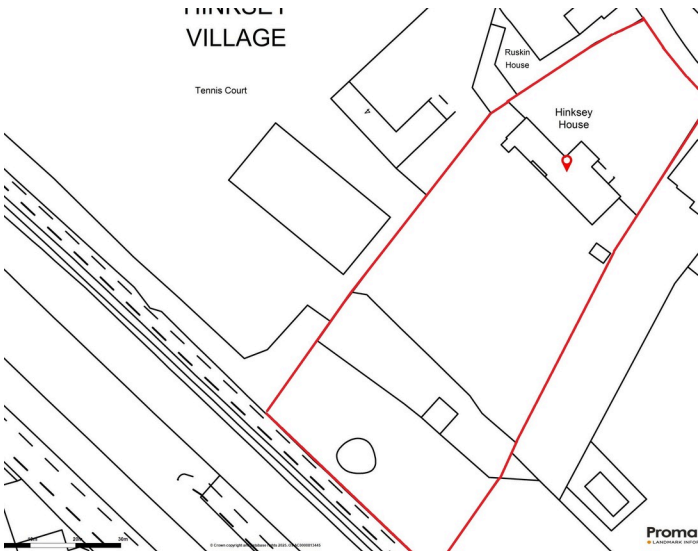
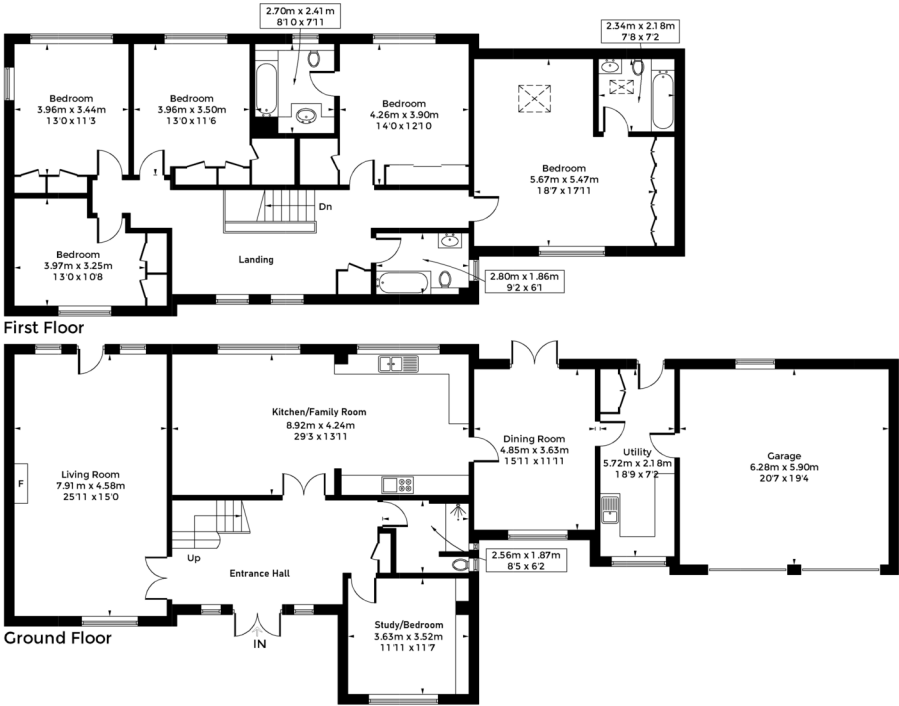








Approximate Gross Internal Area = 325.6 sq m / 3505 sq ft  
(Including Garage)



**Council Tax:**  
Band G - £4028.13

**Parking:**  
Off-street parking for several cars & double garage

**Local Authority:**  
Vale of White Horse D.C.

Energy Efficiency Rating		
	Current	Potential
Very energy efficient - lower running costs		
(92+) <b>A</b>		
(81-91) <b>B</b>		
(69-80) <b>C</b>		
(55-68) <b>D</b>		
(39-54) <b>E</b>		
(21-38) <b>F</b>		
(1-20) <b>G</b>		
Not energy efficient - higher running costs		
	58	72
England, Scotland & Wales		
EU Directive 2002/91/EC		



# “ LOCATION COMMENT

*North Hinksey Village is located just on the edge of Oxford and offers easy access into the city centre, Oxford's Rail stations (London in under an hour) and onto the A34 and A420. There is an excellent village pub (The Fishes), access to lovely countryside walks, a local Rugby club and Paddle and Tennis courts just a short walk away. There are plenty of amenities close by on the recently developed Elms parade including a variety of restaurants, Opticians, Dentist and a GP surgery.*

*North Hinksey Primary School and Matthew Arnold Upper school are within walking distance and easy access to Oxfordshire's private schools and Universities*





## OUR NETWORK OF OFFICES ACROSS OXFORDSHIRE

Breckon & Breckon  
est.1947



**Every office** has access to  
**every buyer** registered across  
our network of seven offices.

Sharing a single database of  
buyers ensures maximum  
exposure for our clients.

### Oxford City Centre

118 High Street  
Oxford  
OX1 4BX

t: 01865 244 735  
e: post@breckon.co.uk



FROM LEFT:  
Millie Carless, George Houlbrooke,  
Eoin Kehoe



### Summertown

t: 01865 310 300 (sales)  
t: 01865 20 1111 (letting)  
e: summertown@breckon.co.uk

### Headington

t: 01865 750 200 (sales)  
t: 01865 763 999 (letting)  
e: headington@breckon.co.uk

### Abingdon-on-Thames

t: 01235 550 550 (sales)  
t: 01235 554 040 (letting)  
e: abingdon@breckon.co.uk

### Witney

t: 01993 776 775 (sales)  
t: 01993 899972 (letting)  
e: witney@breckon.co.uk

### Woodstock

t: 01993 811 881 (sales)  
t: 01993 810 100 (letting)  
e: woodstock@breckon.co.uk

### Bicester

t: 01869 24 24 23 (sales & letting)  
e: bicester@breckon.co.uk

### New Homes

t: 01865 261 222  
e: newhomes@breckon.co.uk

### Land Team

t: 01865 558 999  
e: land@breckon.co.uk

### Letting and Property Management

t: 01865 20 1111  
e: lettings@breckon.co.uk

### Creative Department

t: 01865 310 300  
e: creative@breckon.co.uk

### Bespoke by Breckon

t: 01865 765 555  
e: bespoke@breckon.co.uk



IMPORTANT NOTICE: These particulars are for information purposes only and do not in whole or in part constitute or form part of any offer or contract, nor should any statement obtained herein be relied upon as a statement or representation of fact. Breckon & Breckon do not test whether the services connected to the property, heating systems and domestic appliances are in working order. We therefore recommend that the purchaser obtains verification from their surveyor or solicitor. Whilst every attempt has been made to ensure the accuracy of the floor plans contained here, measurements of doors, windows and rooms are approximate and no responsibility is taken for any error, omission or mis-statement. These plans are for representation purposes only as defined by the RICS code of measuring practice and should be used as such by any possible purchaser.