



1A BRAKSPEAR MEWS, NEW STREET, HENLEY-ON-THAMES

---

## 1A BRAKSPEAR MEWS

---



*A beautifully presented ground floor apartment with a private garden and two parking spaces in an exclusive gated location in the heart of Henley-on-Thames.*

---

Brakspear Mews is an historic residential development on the former site of the Brakspear Brewery in Henley-on-Thames. Built within the brewery's original 18th-century footprint, it is ideally positioned for Henley's vibrant town centre, riverside amenities, shops, restaurants and renowned cultural and sporting events.





---

## THE PROPERTY

---

A central hallway creates an immediate sense of space and connects all rooms. The main reception room provides generous sitting and dining areas with a recessed open-plan kitchen. The principal bedroom features floor-to-ceiling glazed doors opening onto the garden, built-in wardrobes and a large ensuite shower room. There is also a second double bedroom, a versatile third room currently used as a study, and a family bathroom, all immaculately presented.

Outside, the apartment benefits from a private paved garden with side access. The communal area offers resident and visitor parking, with two allocated spaces.









---

# PROPERTY INFORMATION

---

## Services

All mains connected

## Local Authority

South Oxfordshire

## Council Tax

E

## EPC

D

## Postcode

RG9 2BP

## What3Words

///worlds.doubts.amuse

## Viewings

By prior appointment with  
Robinson Sherston

## Sales Disclaimer

IMPORTANT NOTICE: Nothing in these particulars shall be deemed to be a statement that the property is in good structural condition or that any services, appliances, equipment, or facilities are in good working order.

Measurements and distances referred to are given as a guide only whilst descriptions of the property are subjective and are used in good faith as an opinion and not as a statement of fact. Purchasers must satisfy themselves by inspection or otherwise on such matters prior to purchase.







Approximate Gross Internal Area 142.0 sq m / 1528.47 sq ft

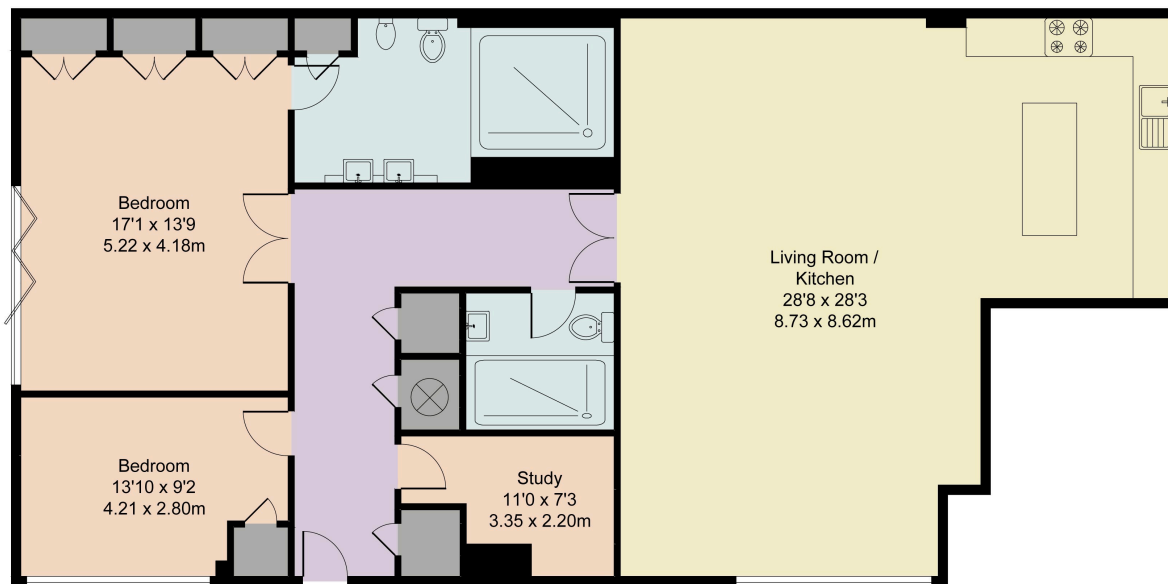


Illustration for identification purposes only,  
measurements are approximate, not to scale.



01491 411 911

[henley@robinsonsherston.co.uk](mailto:henley@robinsonsherston.co.uk)

[robinsonsherston.co.uk](http://robinsonsherston.co.uk)

---