

Juniper House
DRAYTON ST. LEONARD, OXFORDSHIRE

Breckon & Breckon
est. 1947



Juniper House is a striking home of exceptional quality, where timeless design meets contemporary luxury. Expertly crafted with impressive proportions and a meticulous attention to detail, it offers an outstanding level of comfort and versatility for modern living.

Approx Gross Internal Area: 2,551 sq. ft.



Breckon & Breckon
est. 1947



INTERNAL STAGED IMAGES FROM LEFT:
Living Room, Kitchen/Dining Room



At the heart of the home is a stunning open-plan kitchen, dining, and family space, designed to impress and perfect for both relaxed everyday living and stylish entertaining.

Sleek finishes including bespoke window dressings to the ground floor and abundant natural light create an uplifting atmosphere, while a separate living room provides an elegant retreat. A well-planned boot room and utility add to the home's effortless practicality.



INTERNAL STAGED IMAGES FROM LEFT:
Bedroom 1, En-suite

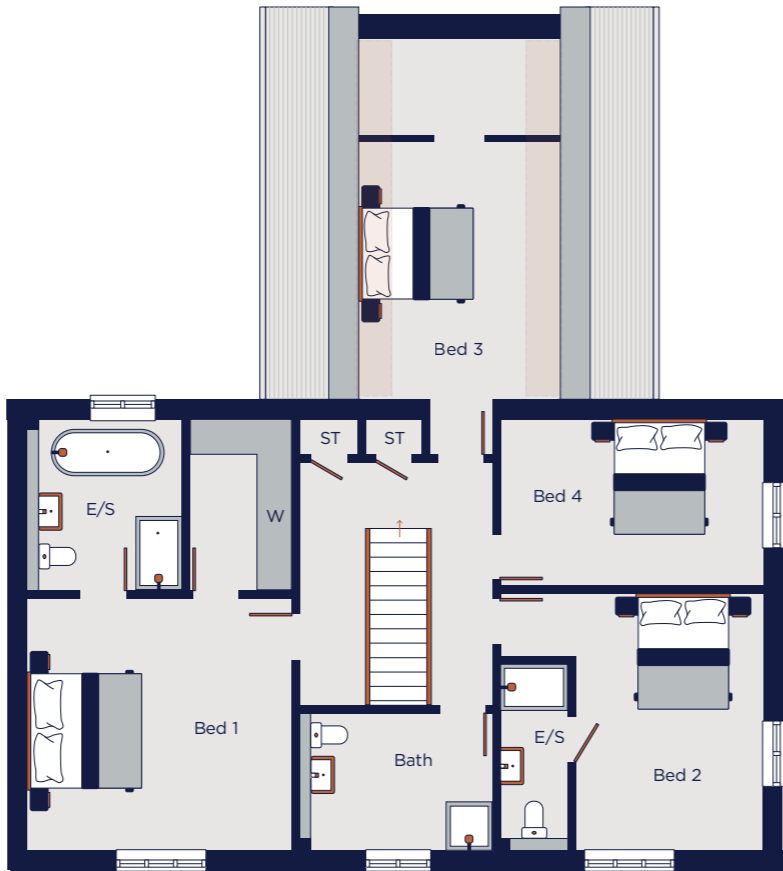


Upstairs, the principal suite delivers boutique-hotel luxury, complete with a beautifully appointed en-suite and generous walk-in wardrobe. A superb guest suite, two additional bedrooms, and a contemporary family bathroom ensure excellent flexibility for families, guests, or home working.

Every element has been curated with quality in mind, from the refined natural stone-effect flooring to the sophisticated porcelain tiling and high-specification finishes throughout.



GROUND FLOOR



FIRST FLOOR

Reduced
headroom below

KEY:
ST: Storage
A/C: Airing
Cupboard
W: Wardrobe

GROUND FLOOR DIMENSIONS

| | | |
|----------------|---------------|----------------|
| Living Room | 6.24m x 5.40m | 20'5" x 17'8" |
| Family Room | 3.49m x 5.34m | 11'5" x 17'6" |
| Kitchen/Dining | 4.57m x 7.54m | 14'11" x 24'8" |
| Study | 2.14m x 3.43m | 7'0" x 11'3" |
| Utility | 2.14m x 3.43m | 7'0" x 11'3" |
| Garage | 5.74m x 2.77m | 18'10" x 9'1" |

FIRST FLOOR DIMENSIONS

| | | |
|-------------------|---------------|----------------|
| Principal Bedroom | 4.68m x 4.40m | 15'4" x 14'5"v |
| Bedroom 2 | 3.32m x 4.50m | 10'10" x 14'9" |
| Bedroom 3 | 3.53m x 5.47m | 11'6" x 17'11" |
| Bedroom 4 | 4.65m x 2.94m | 15'3" x 9'7" |





INTERNAL STAGED IMAGES FROM LEFT:
Rear View



Outside, the property opens onto a fully enclosed, professionally landscaped garden with a stylish paved terrace, ready to enjoy from the moment you move in. A garage and private driveway provide further convenience.

With sustainability at its core, Juniper House is equipped for the future, featuring an air source heat pump, energy-efficient lighting, and an EV charging point.



IMAGES FROM TOP:

Nag's Head Island, Abingdon
Town Hall, Abingdon
Ship Street, Oxford City Centre,



Drayton St. Leonard

Drayton St. Leonard is an idyllic South-Oxfordshire village situated approximately 8 miles from the historic market towns of Abingdon and Wallingford. Oxford is 10 miles away and junction 7 of the M40 for London and Birmingham is just 6 ½ miles. Didcot Parkway railway station for regular services to London Paddington is also within easy reach.

The community here is strong and tight-knit, and many events are organized by the villagers throughout the year. These events include a Safari Supper, Summer Fête, quiz nights, wine-tasting evenings, flower arranging classes, and film nights. There are also several active clubs and societies in the village, including a History Society, Investment Club, Book Club, Gardening Club, and Bellringing Group

The market towns of Wallingford and Abingdon provide comprehensive day-to-day amenities and a range of shops, including Waitrose. The highly regarded Wild Pig Farm Shop is situated in near-by Stadhampton and both Berinsfield and Stadhampton, have smaller convenience stores.

The village falls within the catchment area for the multi-lingual European School at Culham and St. Birinius C of E primary school in Dorchester on Thames, with secondary schooling in Abingdon.

Ready to view?

get in touch

Twining House
294 Banbury Road
Summertown
Oxford OX2 7ED

Telephone:

01865 261 222

Email:

newhomes@breckon.co.uk

Breckon & Breckon
est.1947

Please note: These particulars are for information purposes only and do not in whole or in part constitute or form part of any offer or contract, nor should any statement obtained herein be relied upon as a statement or representation of fact. Breckon & Breckon do not test whether the services connected to the property, heating systems and domestic appliances are in working order. We therefore recommend that the purchaser obtains verification from their surveyor or solicitor. Whilst every attempt has been made to ensure the accuracy or the floor plans contained here, measurements of doors, windows and rooms are approximate and no responsibility is taken for any error, omission or mis-statement. These plans are for representation purposes only as defined by RICS code of measuring practice and should be used as such by any possible purchaser.

Breckon & Breckon
est. 1947