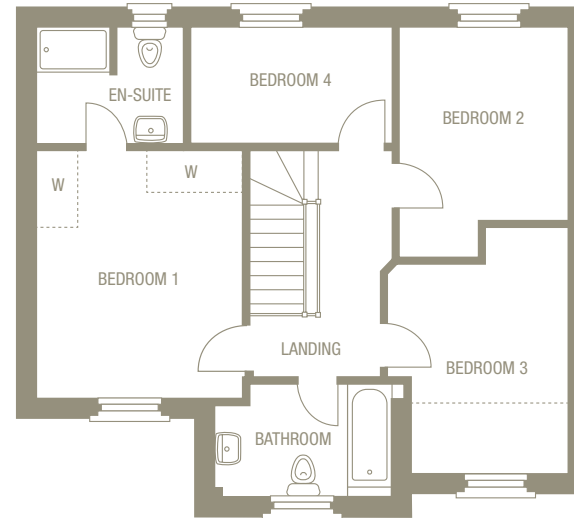
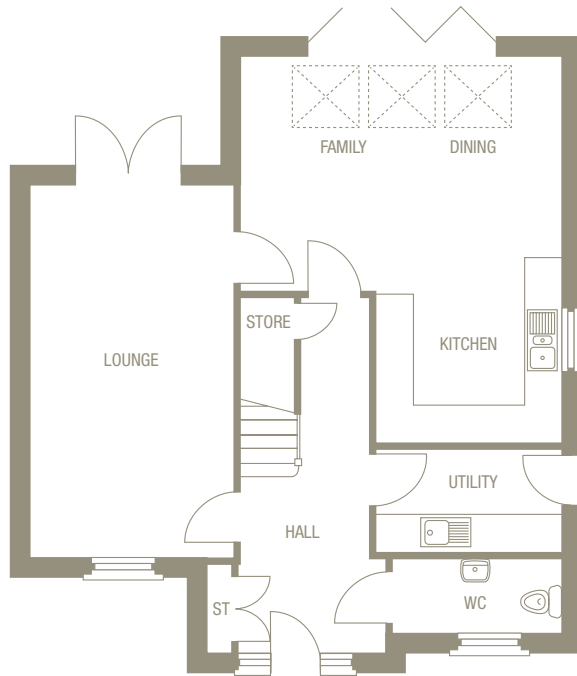


The Warwick

4 bedroom detached home with garage.



This is a great home for entertaining family & friends or simply relaxing. The Warwick is designed to flow seamlessly, thanks to its welcoming hallway leading to the large lounge and the open-plan kitchen/family/dining room which is lit from above with a series of skylights. Both areas lead out to the garden while they also interconnect for easy entertaining. With a separate utility room as well as 4 bedrooms and 2 bathrooms, The Warwick has been cleverly designed for maximum impact.



Ground Floor		
Room	Size	
Lounge	6025 x 3300mm	19'9" x 10'10"
Kitchen/Family/Dining	6265* x 5175*mm	20'7"* x 17'0"*
Utility	3000 x 1625mm	9'10" x 5'4"
Cloaks	2725 x 1170mm	8'11" x 3'10"

First Floor		
Room	Size	
Bedroom 1	3350 x 4025mm	11'0" x 13'2"
En suite 1	2390 x 1925mm	7'10" x 6'2"
Bedroom 2	2775 x 3765*mm	9'1" x 12'4"*
Bedroom 3	2935* x 4110*mm	9'8"* x 13'6"*
Bedroom 4	3285 x 1915mm	10'9" x 6'3"
Bathroom	2875* x 1810*mm	9'5"* x 5'11"*

1,424 total sq ft

*Denotes maximum room dimensions. This is a computer generated image of The Warwick, elevation treatment may vary. All internal images are indicative of a Morris house type. Room sizes are approximate. Plots may be handed and any garages may be single or double. Kitchen and bathroom layouts are indicative. These plans are correct at time of going to press, but may be subject to change during construction. Please ensure that you check for specific plot details. Speak to our Sales Advisor for individual parking configurations.