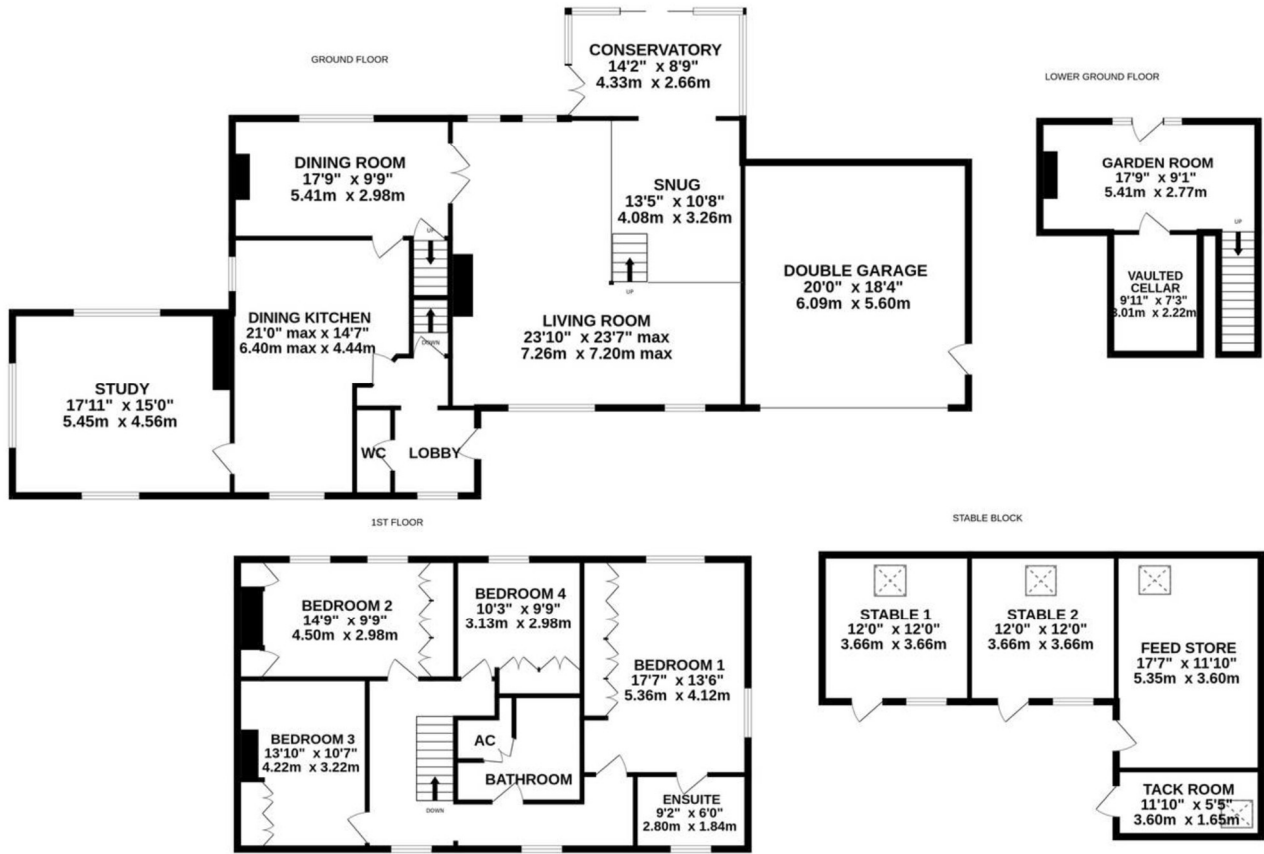




**Shays Laithe, Scammonden, Huddersfield, HD3 3FW**

---



Whilst every attempt has been made to ensure the accuracy of the floorplan contained here, measurements of doors, windows, rooms and any other items are approximate and no responsibility is taken for any error, omission or mis-statement. This plan is for illustrative purposes only and should be used as such by any prospective purchaser. The services, systems and appliances shown have not been tested and no guarantee as to their operability or efficiency can be given.  
Made with Metropix ©2024

## PROPERTY DESCRIPTION

A lovely 19th century stone built and slated farmhouse, barn and double garage totalling around 2,700 square feet and standing in approximately 2.5 acres of formal gardens together with two paddocks, stable block and turn out area, making this ideal for a hobby farm whether, horses, sheep, alpaca etc. Shays Laithe occupies a delightful rural position with a variety of wildlife including barn owls, pheasant and grouse and yet has the convenience of two nearby junctions of the M62 linking East Lancashire to West Yorkshire. The accommodation briefly comprises entrance hall, downstairs WC, stunning split level living room and snug, separate dining room, dining kitchen with a range of integrated appliances and large study/bedroom five. To the lower ground floor, garden room and barrel-vaulted cellar. To the first-floor landing leading to principal bedroom, shower room, three further bedrooms with fitted furniture and house bathroom. Externally there is a double width tarmac driveway leading to a double garage with electric sectional door and further parking to the side. Property features uPVC double glazing, oil fired central heating and mains drainage.

**Offers Over £750,000**

---

## GROUND FLOOR

### ENTRANCE HALL

Enter the property through a double-glazed composite panelled entrance door. The entrance hall features a quarry tiled floor and a double-glazed, uPVC window which enjoys pleasant aspects. From the hallway, access is gained to the downstairs w.c. and dining kitchen

### DOWNSTAIRS W.C

*Measurements- 5'7" x 3'0"*

The downstairs w.c. features quarry tiled flooring and is fitted with a suite comprising of a hand wash basin with tiled splashback and a low-flush w.c. with concealed cistern.

### LIVING ROOM

*Measurements- 23'10" x 23'7"*

As the dimensions indicate, the living room is a beautifully proportioned reception room which has the original barn arch, together with windows to the front and rear elevations, providing plenty of natural light and enjoying stunning, far reaching, rural views. The focal point of the room is the stone fireplace which is home to a working, solid fuel fire which rests on a stone hearth. To one side are twin timber and glazed doors providing access to the dining room and a short flight of five steps with oak and glazed balustrade lead to the snug.





## SNUG

*Measurements – 13'5" x 10'8"*

The snug is open plan to the living room but at a lower level. It features two display niches and provides access to the conservatory.

## CONSERVATORY

*Measurements – 14'2" x 8'9"*

The conservatory features exposed stonework, uPVC double-glazed windows, patio doors and French doors; all of which offer far-reaching, panoramic views.



## DINING ROOM

*Measurements – 19'0" x 9'9"*

The dining room can be accessed from either the living room or the kitchen and is situated to the rear of the property, enjoying fabulous far-reaching views. The focal point of the room is the stone fireplace and hearth. Adjacent to the kitchen door is a door providing access to a staircase which rises to the first floor.



## DINING KITCHEN

*Measurements – 21'0" x 14'7"*

With dual aspect, uPVC, double-glazed windows, both of which enjoy rural views, the dining kitchen also features quarry tiled flooring, inset LED down lights to a beamed ceiling, and is fitted with an excellent range of oak-veneered base and wall cupboards with corian work surfaces, tiled splashbacks, and drawers. The kitchen boasts bevelled glass display cupboards with glass shelving and down lights, a five-ring De Deitrich induction hob with extractor hood oven, a Bosch electric fan-assisted twin oven, Baumatic microwave, and Bosch coffee machine. There is also housing for an American-style fridge freezer, integrated Miele washing machine, a Beko tumble dryer, a Beko dishwasher, and a Belfast sink. To one side, a door provides access to the study.



## STUDY

*Measurements- 17'11" x 15'0"*

The study offers a lovely aspect to three elevations which provides this spacious room with an abundance of natural light. There are inset LED downlights and a loft access point.



## LOWER GROUND FLOOR

### GARDEN ROOM

*Measurements- 17'9" x 9'1"*

The garden room is accessed via a stone staircase from the entrance hall. It features double-glazed, uPVC windows and a central door, all of which enjoy stunning, far-reaching views and fill the room with natural light. There is a useful storage cupboard, beams to the ceiling, a stone fireplace and hearth, and to one side is a door providing access to a barrel-vaulted keeping cellar.

### CELLAR

*Measurements- 9'11" x 7'3"*

---

## FIRST FLOOR

### LANDING

The first-floor landing features a double-glazed, uPVC window and timber, sealed unit, double-glazed window. There are fitted bookshelves and a loft access point.

### BEDROOM ONE

*Measurements- 17'7" x 13'6"*

Bedroom one is a large double bedroom with dual aspect windows, providing plenty of natural light and stunning, far-reaching views. There are beams to the ceiling, a loft access point, fitted floor-to-ceiling wardrobes, drawers and dressing table, and a door providing access to the en-suite shower room.



## **BEDROOM ONE EN-SUITE SHOWER ROOM**

*Measurements- 9'2" x 6'0"*

The en-suite shower room features part-tiled walls and full tiling around the shower, tiled flooring, a chrome ladder-style heated towel rail, and is fitted with a suite comprising Duravit circular wash hand basin with chrome Monobloc tap, a matching bidet, a matching low-flush w.c. with concealed cistern, and a large walk-in shower with glazed floor-to-ceiling panel and chrome shower fitting.



## BEDROOM TWO

*Measurements- 14'9" x 9'9"*

Bedroom two is another double bedroom situated to the rear of the property and, once again, enjoying fabulous far-reaching views from two sets of double glazed, uPVC windows. There is a bank of fitted floor to-ceiling wardrobes and cupboards, a chimney breast with decorative fireplace, and further wardrobes and cupboards to each side of the chimney breast.



## BEDROOM THREE

*Measurements - 13'10" x 10'7"*

Bedroom three is another double room with dual aspect windows to the front and side elevations. There is a pedestal wash hand basin with chrome mixer tap and fitted furniture, including floor-to-ceiling wardrobes, a desk with drawers beneath, and high-level cupboards together with bedside tables.



## BEDROOM FOUR

*Measurements – 10'3" x 9'9"*

Bedroom four is situated adjacent to bedroom two and, once again, enjoys stunning, far-reaching views. There is fitted furniture, including floor-to-ceiling fitted wardrobes, a desk with cupboards beneath, and drawers.



## HOUSE BATHROOM

*Measurements – 10'5" x 8'3"*

The house bathroom is part-tiled and features a fitted cylinder and linen cupboard and a shaver socket. The suite comprises of a double-ended, timber panelled bath with shower over, twin pedestal wash hand basins, and a low-flush w.c. with concealed cistern.



## OUTSIDE

### FRONT GARDEN

Externally to the front, the property features a double width tarmac driveway which leads to an attached double garage. To the right of the garage are twin, five bar, timber gates which open onto a further parking area and provide access to the stable block. A stone flagged and cobbled pathway leads to the property's main entrance. Across the front of the property is a lawn garden with planted shrubs and a dry-stone wall border.

### REAR GARDEN

Immediately to the rear of the property is a stone flagged pathway and patio. There is a vegetable garden to the far side, as well as a rockery. The property features a greenhouse, outside power, and an external tap. There is then a sloping grassed area bordered by dry stone wall and post and rail fencing. This area has a number of trees, a pond, and daffodil bed. To one side is a six-bar timber hand gate which provides access to one of the property's paddocks, and a further six-bar timber hand gate which provides access to a concrete driveway leading to the stable block. Immediately to the front of the stable block is a concrete turnout area which is bordered by timber fencing and features a six-bar timber gate providing access to two interconnecting paddocks which are divided by post and rail fencing and divided by dry stone walling. **STABLE BLOCK** The stable block features two 12' x 12' stables, together with feed store (17'7" x 11'10") and tackroom (11'10" x 5'5"). There is lighting and power in situ, as well as trace heating.







---

## **ADDITIONAL INFORMATION**

Central heating- The property has an oil-fired central heating system

Double glazing- The property has uPVC double glazing

Property tenure – Freehold

Directions- Using satellite navigation enter the postcode HD3 3FW

## **BOUNDARY OWNERSHIP**

The boundary ownerships and tenure of the property have not been checked on the title deeds for any discrepancies or rights of way if any (This is a standard statement on all our brochures due to the Property Misdescription's Act)

## **COPYRIGHT**

Unauthorised reproduction prohibited.

## **FREE VALUATIONS**

If you are thinking of a move then take advantage of our FREE valuation service, telephone our nearest office for a prompt and efficient service.

## **CONSUMER PROTECTION FROM UNFAIR TRADING REGULATIONS 2008**

Simon Blyth for themselves and for the vendors or lessors of this property, whose agent they are, have made every effort to ensure the details given have been prepared in accordance with the above act and to the best of our knowledge give a fair and reasonable representation of the property. Please note:

1. There is a six inch measurement tolerance or metric equivalent and the measurements given should not be entirely relied upon and purchasers must make their own measurements if ordering carpets, curtains or other equipment.

2. None of the main services, i.e. gas, water, electricity, drainage or central heating system (if any) have been tested in any way whatsoever. This also includes appliances which are to be left in situ by the vendors.

**PURCHASERS MUST SATISFY THEMSELVES AS TO THE CONDITION AND EFFECTIVENESS OF ANY SUCH APPLIANCES OR SERVICES**

**FLOOR PLANS NOT TO SCALE - FOR IDENTIFICATION PURPOSES ONLY**

## **MAILING LIST**

Keep up to date with all our new properties. Let us know your price range, the area and type of home you require by registering on our mailing list.

## **MORTGAGE ADVICE**

Simon Blyth Estate Agents understand that getting appropriate mortgage advice is a crucial part of the home buying process. Finding a suitable mortgage has always been something of a daunting experience which is why we would like to introduce you to our independent

---

---

mortgage advisors. They provide tailored mortgage solutions through a wealth of experience in the mortgage and property market and offer access to the full unrestricted range of products available.

Our advisors are dedicated to providing ongoing guidance and advice throughout the entire house purchase process keeping you, your estate agent and solicitor involved with continual updates on the progress. Once in your new home they will be available for ongoing support to build a long term relationship for your future mortgage planning. Your home may be repossessed if you do not keep up repayments on your mortgage.

For friendly expert advice on your mortgage requirements, or to discuss the potential of making your ideas a reality then please call in or phone for a chat.

**OFFICE OPENING TIME**  
**7 DAYS A WEEK**

Monday to Friday - 8.45 to 17:30

Saturday - 9:00 to 16:00

Sunday - 11:00 to 14:00

---



### MAIN CONTACTS

T: 01484 651878

W: [www.simonblyth.co.uk](http://www.simonblyth.co.uk)

E: [huddersfield@simonblyth.co.uk](mailto:huddersfield@simonblyth.co.uk)

### OFFICE OPENING TIMES

#### 7 DAYS A WEEK

Monday to Friday - 8.45 to 17:30

Saturday - 9:00 to 16:00

Sunday - 11:00 to 14:00



[WWW.SIMONBLYTH.CO.UK](http://WWW.SIMONBLYTH.CO.UK)

Wakefield  
01924 361631

Huddersfield  
01484 651878

Holmfirth  
01484 689689

Kirkburton  
01484 603399

Penistone  
01226 762400

Sheffield  
01143 216 590

Barnsley  
01226 731730

Pontefract  
01977 800259