

# 25 BARNARD MEWS

BURFORD OX18 4EY

£124,000

GUIDE PRICE



Built in 2021 this terraced home is offered for sale on a 40% shared basis (full market value £310,000), and enjoys an enviable position within the exclusive Cotswold Gate development on the edge of the desirable Cotswold town of Burford. On the ground floor the hallway has a cloakroom and large storage cupboard. Positioned at the front of the house the kitchen is fitted with a range of modern units with additional space for white goods. The spacious living/dining room has double doors onto the garden and offers space for both relaxing and family dining.

Fully enclosed, the garden is a mix of paving and lawn with a useful storage shed and a gate to a side return. Additional benefits include parking for two cars plus visitor spaces.

 2     1     1

 Enclosed

**Breckon & Breckon**  
est.1947

Approximate Gross Internal Area 84.19 sq.m / 906 sq.ft

### Local Authority

West Oxfordshire District Council

### Council Tax

Band D £2,607.67

### Tenure

Leasehold - 245 years remaining

Rent £554.00 per month

Service Charge £51.67 per month

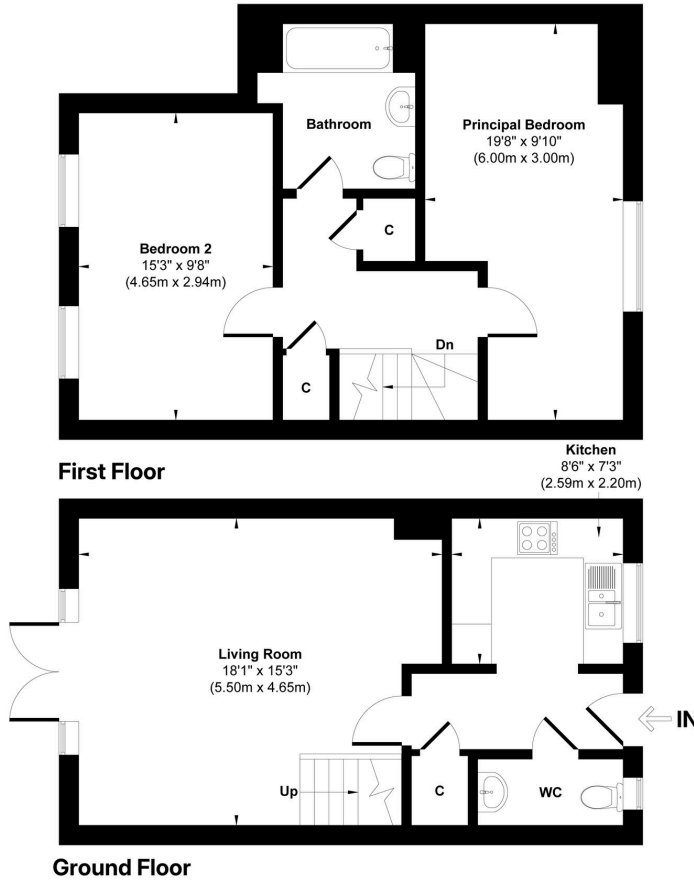
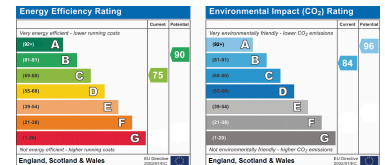


Illustration for identification purpose only, measurements approximate and not to scale.



**Every office** has access to **every buyer** registered across our network of seven offices.

Sharing a single database of buyers ensures maximum exposure for our clients.

## Witney Sales

10 Market Square  
Witney Oxfordshire  
OX28 6BB

t: 01993 776 775

e: [witney@breckon.co.uk](mailto:witney@breckon.co.uk)

#### Summertown

t: 01865 310 300 (sales)  
t: 01865 20 1111 (letting)  
e: [summertown@breckon.co.uk](mailto:summertown@breckon.co.uk)

#### Woodstock

t: 01993 811 881 (sales)  
t: 01993 810 100 (letting)  
e: [woodstock@breckon.co.uk](mailto:woodstock@breckon.co.uk)

#### Headington

t: 01865 750 200 (sales)  
t: 01865 763 999 (letting)  
e: [headington@breckon.co.uk](mailto:headington@breckon.co.uk)

#### New Homes

t: 01865 261 222  
e: [newhomes@breckon.co.uk](mailto:newhomes@breckon.co.uk)

#### Letting and Property

**Management**  
t: 01865 20 1111  
e: [lettings@breckon.co.uk](mailto:lettings@breckon.co.uk)

#### Oxford City Centre

t: 01865 244 735 (sales)  
t: 01865 20 1111 (letting)  
e: [post@breckon.co.uk](mailto:post@breckon.co.uk)

#### Bicester

t: 01869 24 24 23 (sales & letting)  
e: [bicester@breckon.co.uk](mailto:bicester@breckon.co.uk)

#### Abingdon-on-Thames

t: 01235 550 550 (sales)  
t: 01235 554 040 (letting)  
e: [abingdon@breckon.co.uk](mailto:abingdon@breckon.co.uk)

#### Land Team

t: 01865 558 999  
e: [land@breckon.co.uk](mailto:land@breckon.co.uk)

#### Creative Department

t: 01865 310 300  
e: [creative@breckon.co.uk](mailto:creative@breckon.co.uk)