





“ There are many parks and green close-by, just a short walk is the Thames Path which leads to Bishops Park, one of the largest green spaces in the area. ”

**G**reyhound Road is located just around the corner from The Queen's Club, a private sporting club that hosts of the annual Queen's Club tennis tournament.

green spaces within the local, just a short walk away is the Thames Path which leads to Bishops Park, one of the largest green spaces in the area which also has a Children's play area.

This apartment is on the first floor and has recently been refurbished throughout, the open plan reception room has a fully integrated kitchen, the double bedroom has good built-in storage and the stylish bathroom has marble tiles. There is also wooden flooring throughout.

Other famous landmarks which are close by include the Hurlingham Club and Fulham Palace.

Travelling around the city is easy, with Barons Court Station just eight minutes walk, West Kensington Station thirteen minutes and Hammersmith Station approximately fifteen minutes walk.

There are many parks and







# Greyhound Road W6

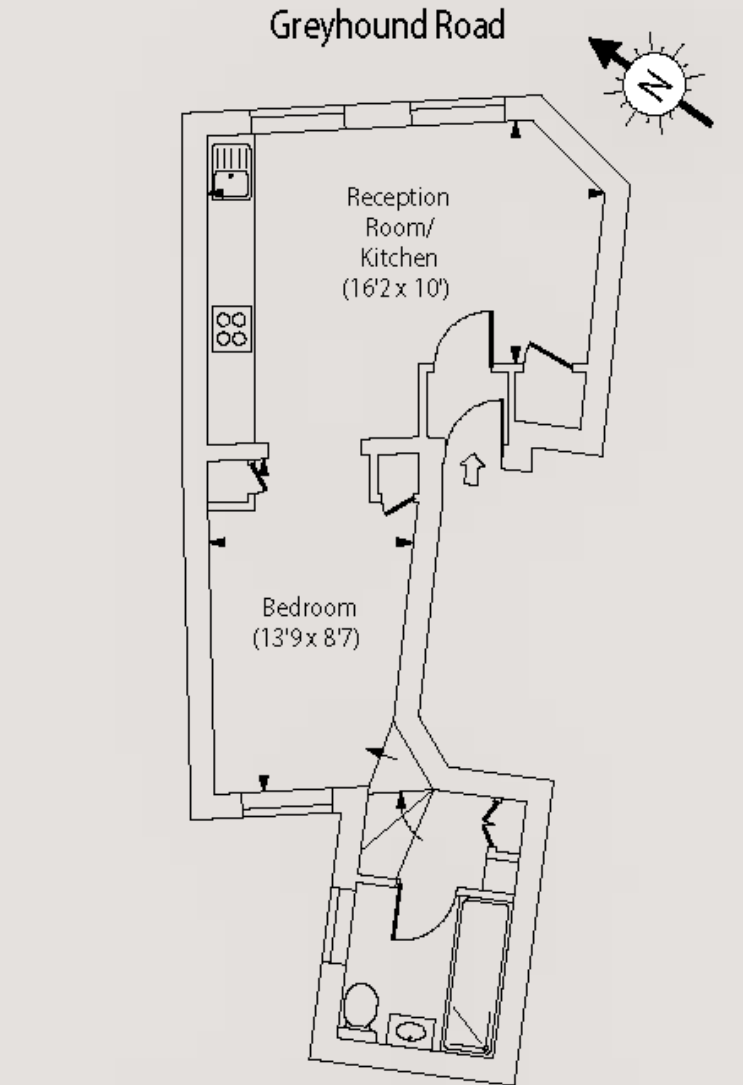
## £390,000

LEASEHOLD - 990 YEARS REMAINING (APPROX)  
SERVICE CHARGE - TBC  
COUNCIL TAX BAND - C  
EPC - D

- One Bedroom
- One Bathroom
- Built in Storage
- Recently Refurbished
- Wood Flooring
- Close to Barons Court & West Kensington Stations

0207 867 3999  
hello@storyofhome.co.uk  
www.storyofhome.co.uk

Story  
of Home



First Floor

Approx Gross Internal Area 377 Sq Ft - 35.02 Sq M

Every attempt has been made to ensure the accuracy of this floor plan however measurements are approximate and for illustration purposes only.  
Measured in accordance with theRICS codes of measuring practice. Not To Scale