



8 MEADOW LANE

WITNEY OX28 6DN



8 MEADOW LANE

WITNEY OX28 6DN

Meadow Lane occupies a superb position within a small development, perfectly placed for easy access to both the town centre and nearby countryside walks. This attractive semi-detached family home features stylish, beautifully presented accommodation arranged over two floors. The dual-aspect sitting room provides a welcoming space to relax, with doors opening directly onto the garden. The modern, light-filled kitchen is also dual aspect and offers an excellent range of units, integrated appliances, and space for additional white goods. With plenty of room for dining and a sofa area, it forms a wonderful hub for family life.

Outside, the rear garden offers a high degree of privacy and the paved patio provides the perfect spot for alfresco dining. In all, this impressive property delivers spacious, high-quality living conveniently located for schools and bus links.

GUIDE PRICE

£390,000



Enclosed





Meadow Lane, Witney, OX28 6DN

Approximate Gross Internal Area
 Main House = 96.52 sq m / 1039 sq ft
 Garage = 13.74 sq m / 148 sq ft
 Total = 110.26 sq m / 1187 sq ft

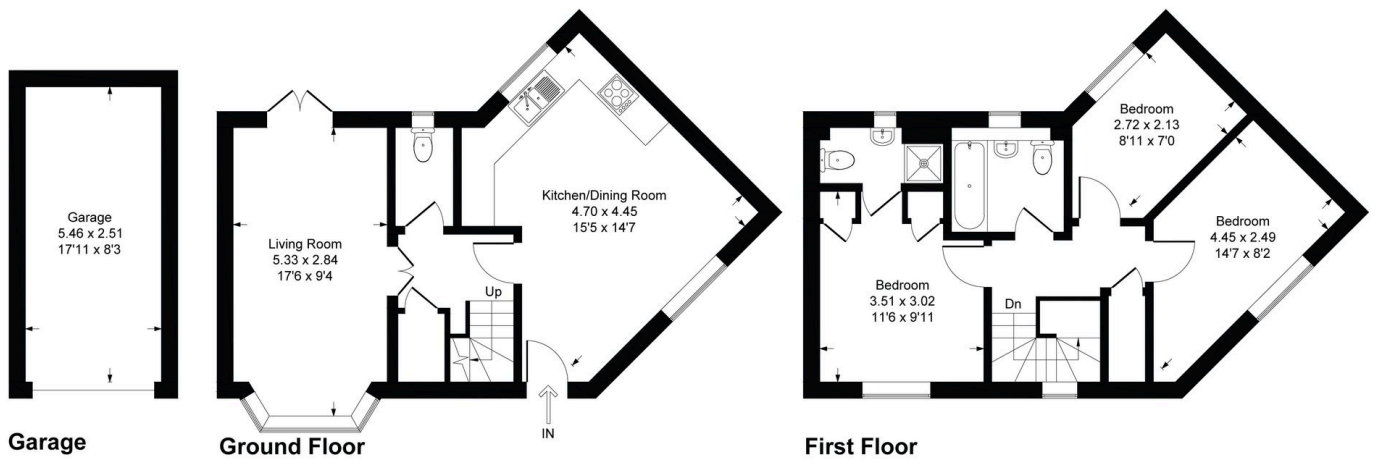



Illustration for identification purpose only, measurements approximate, and not to scale.

Council Tax:
 Band C - £2,246.59

Parking:
 Garage & Parking

Local Authority:
 West Oxfordshire District Council

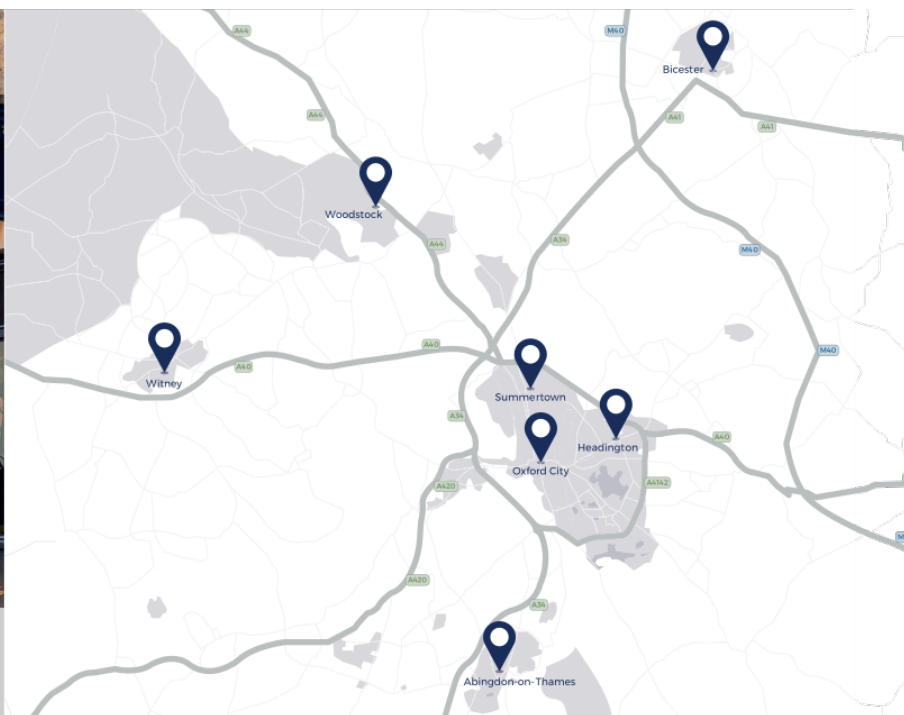
Energy Efficiency Rating		Current	Potential
Very energy efficient - lower running costs			
(92+)	A		90
(81-91)	B		
(69-80)	C	78	
(55-68)	D		
(39-54)	E		
(21-38)	F		
(1-20)	G		
Not energy efficient - higher running costs			
England, Scotland & Wales			EU Directive 2002/91/EC 

LOCATION

Witney is a delightful market town on the edge of the Cotswolds and historically connected with the wool trade and blanket making. It has an excellent range of shopping and leisure amenities including most of the high street retail brands, as well as a multi-screen cinema, a fine choice of pub/restaurants, and open green spaces and riverside walks to the Witney Lake & Country Park. The A40 provides a road link to Oxford and a regular bus service runs to both Oxford and also Long Hanborough/Woodstock and the Oxford Parkway rail station. There is also a main line station with a fast London service in nearby Long Hanborough about five miles away.



OUR NETWORK OF OFFICES ACROSS OXFORDSHIRE



Every office has access to **every buyer** registered across our network of seven offices.

Sharing a single database of buyers ensures maximum exposure for our clients.

Witney Sales

10 Market Square
Witney
Oxfordshire
OX28 6BB

t: 01993 776 775
e: witney@breckon.co.uk



FROM LEFT: Alex Chappell,
Sarah Thomas, Julia Briggs,
Rose McDermott and John Bouwer

Summertown

t: 01865 310 300 (sales)
t: 01865 20 1111 (letting)
e: summertown@breckon.co.uk

Oxford City Centre

t: 01865 244 735 (sales)
t: 01865 20 1111 (letting)
e: post@breckon.co.uk

Headington

t: 01865 750 200 (sales)
t: 01865 763 999 (letting)
e: headington@breckon.co.uk

Abingdon-on-Thames

t: 01235 550 550 (sales)
t: 01235 554 040 (letting)
e: abingdon@breckon.co.uk

Woodstock

t: 01993 811 881 (sales)
t: 01993 810 100 (letting)
e: woodstock@breckon.co.uk

Bicester

t: 01869 242 423 (sales & letting)
e: bicester@breckon.co.uk

New Homes

t: 01865 261 222
e: newhomes@breckon.co.uk

Land Team

t: 01865 558 999
e: land@breckon.co.uk

Letting and Property Management

t: 01865 20 1111
e: lettings@breckon.co.uk

Creative Department

t: 01865 310 300
e: creative@breckon.co.uk

Bespoke by Breckon

t: 01865 765 555
e: bespoke@breckon.co.uk



EST. 1947



breckon.co.uk

IMPORTANT NOTICE: These particulars are for information purposes only and do not in whole or in part constitute or form part of any offer or contract, nor should any statement obtained herein be relied upon as a statement or representation of fact. Breckon & Breckon do not test whether the services connected to the property, heating systems and domestic appliances are in working order. We therefore recommend that the purchaser obtains verification from their surveyor or solicitor. Whilst every attempt has been made to ensure the accuracy of the floor plans contained here, measurements of doors, windows and rooms are approximate and no responsibility is taken for any error, omission or mis-statement. These plans are for representation purposes only as defined by the RICS code of measuring practice and should be used as such by any possible purchaser.