



**8 North Star Court Old North Road, Royston**  
Royston

**£1,200 pcm**







## 8 North Star Court Old North Road

Royston, Royston

Ensum Brown are delighted to offer for rent this well-appointed two double bedroom apartment conveniently located at a central point within Royston. This beautifully presented property is completed to an incredibly high specification and externally, it is further complemented with the addition of an allocated parking space. Contact Ensum Brown for more information before its too late! Available Early May.

- Two Double Bedrooms
- Master with En-Suite
- Ground Floor Apartment
- Allocated Off Road Parking
- Immaculately Presented Throughout
- All Appliances Included
- Conveniently Located Close to Royston's Train Station
- NO Pets Allowed
- EPC Rating: B
- Available Early May



# 8 North Star Court Old North Road

Royston, Royston

Ensum Brown are delighted to offer for rent this well-appointed two double bedroom apartment conveniently located at a central point within Royston. This beautifully presented property is completed to an incredibly high specification and externally, it is further complemented with the addition of an allocated parking space. Contact Ensum Brown for more information before its too late!

Available Early May.

Council Tax band: C

Tenure: Leasehold

Ensum Brown are delighted to offer for rent this well-appointed two double bedroom apartment conveniently located at a central point within Royston. This beautifully presented property is completed to an incredibly high specification and externally, it is further complemented with the addition of an allocated parking space. Contact Ensum Brown for more information before its too late!

Available Early May.

## PROPERTY INSIGHT

Council Tax Band: Band C

Initial Tenancy Length: Twelve Months







## 8 North Star Court Old North Road

Royston, Royston

Ensum Brown are delighted to offer for rent this well-appointed two double bedroom apartment conveniently located at a central point within Royston. This beautifully presented property is completed to an incredibly high specification and externally, it is further complemented with the addition of an allocated parking space. Contact Ensum Brown for more information before its too late! Available Early May.

Council Tax band: C

Tenure: Leasehold

- Two Double Bedrooms
- Master with En-Suite
- Ground Floor Apartment
- Allocated Off Road Parking
- Immaculately Presented Throughout
- All Appliances Included
- Conveniently Located Close to Royston's Train Station
- NO Pets Allowed
- EPC Rating: B
- Available Early May

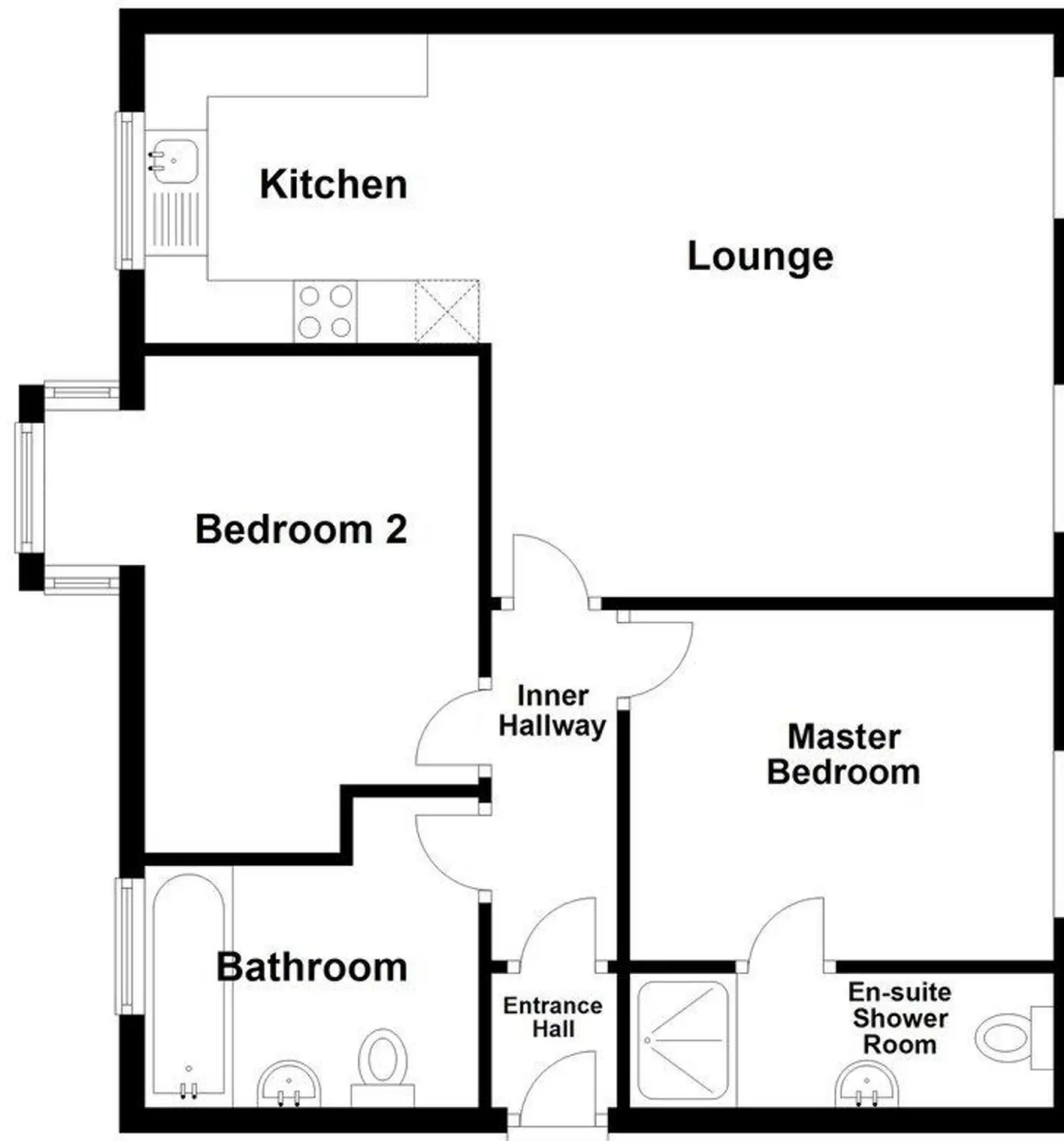






## Ground Floor

Approx. 62.8 sq. metres (676.0 sq. feet)



Total area: approx. 62.8 sq. metres (676.0 sq. feet)

FOR ILLUSTRATIVE PURPOSES ONLY - NOT TO SCALE.

Plan produced using PlanUp.





## Ensum Brown

Ensum Brown Estate Agents, 42 High Street, Royston - SG8 9AG

01763 750000

[royston@ensumbrown.com](mailto:royston@ensumbrown.com)

<http://ensumbrown.com>

