



Chartfield Avenue, London, SW15

£4,250,000



Property Description

A stunning six bedroom, seven bathroom detached house situated in the heart of West Putney. This superb family residence arranged over four floors comprises of six double bedrooms, four of which have luxury en-suite bathrooms. Three of the bedrooms also having views of the south facing garden.

On the lower ground floor, you are invited by lashings of natural light into a spacious open plan entertaining space comprised of a bar and a cinema room or recording studio which can be separated by a moving soundproof wall, large storage room, bathroom and utility areas. There is also direct access to a private and secluded terrace.

On the ground floor you enter the house through its beautiful vaulted hallway which takes you through to the stunning kitchen, reception and dining room which can be divided by soundproof folding walls to provide a separate annex including a guest bedroom with en-suite. Off the hallway there is access to the integral double garage and a guest bathroom with shower.

First floor consists of four large double bedrooms with built in wardrobes, two of which have en-suites and there is also a family bathroom with bath and shower.

Top floor is a large master bedroom with an en-suite and a large storage area.

Chartfield Avenue is situated in the heart of fashionable West Putney. Within easy reach are Putney's numerous shops, coffee houses, bars, and restaurants. The villages of Wimbledon and Barnes are close by. Putney's underground and mainline station offers swift communication to the City and West End



Key Features

- ✓ Underfloor Heating throughout
- ✓ Integrated Security, CCTV & Entertainment System
- ✓ Gated Off Street Parking
- ✓ South Facing Garden over Three Levels
- ✓ Soundproof Folding Walls
- ✓ Solar Panels
- ✓ Six Double Bedrooms
- ✓ Over 5200 SQFT
- ✓ Electric Blinds















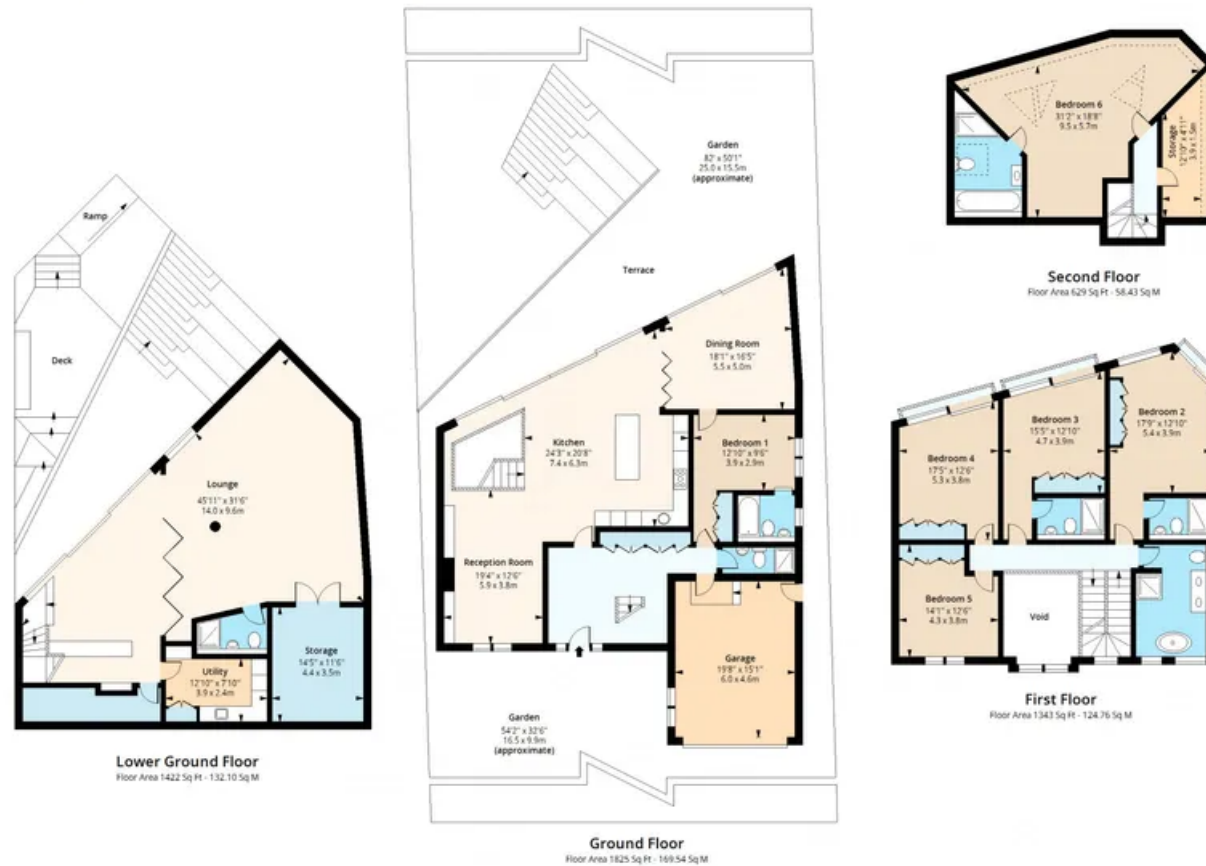




All

Chartfield Avenue, SW15

Approx. Gross Internal Area 5219 Sq Ft - 484.85 Sq M



Floor plan is for illustrative purposes only and is not to scale. Every attempt has been made to ensure the accuracy of the floor plan shown, however all measurements, fixtures, fittings and data shown are an approximate interpretation for illustrative purposes only.

lpaplus.com

Agent & Homes

02035980808

hello@agentandhomes.com

