



24 Gainsborough Drive, Selsey

Guide Price £335,000

24 Gainsborough Drive

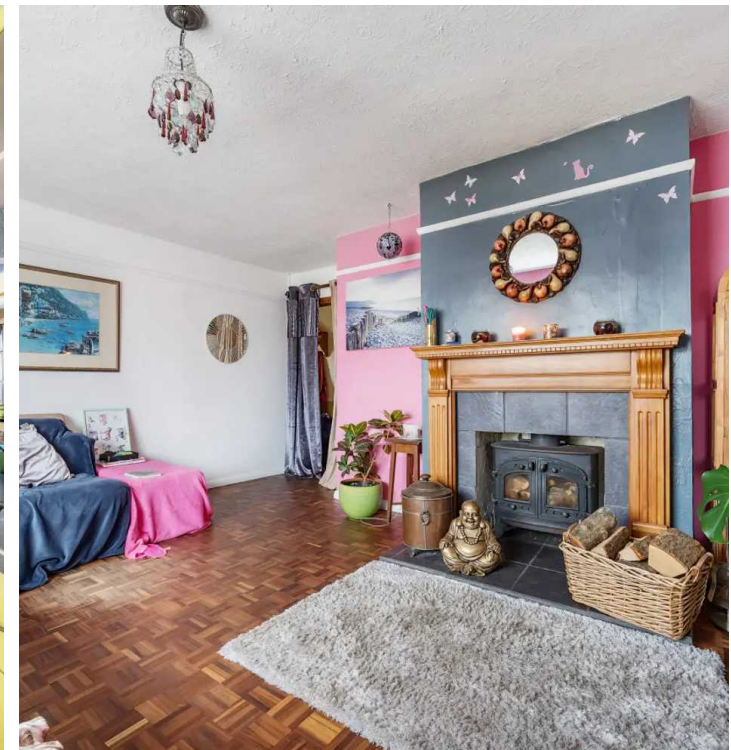
Selsey, Chichester

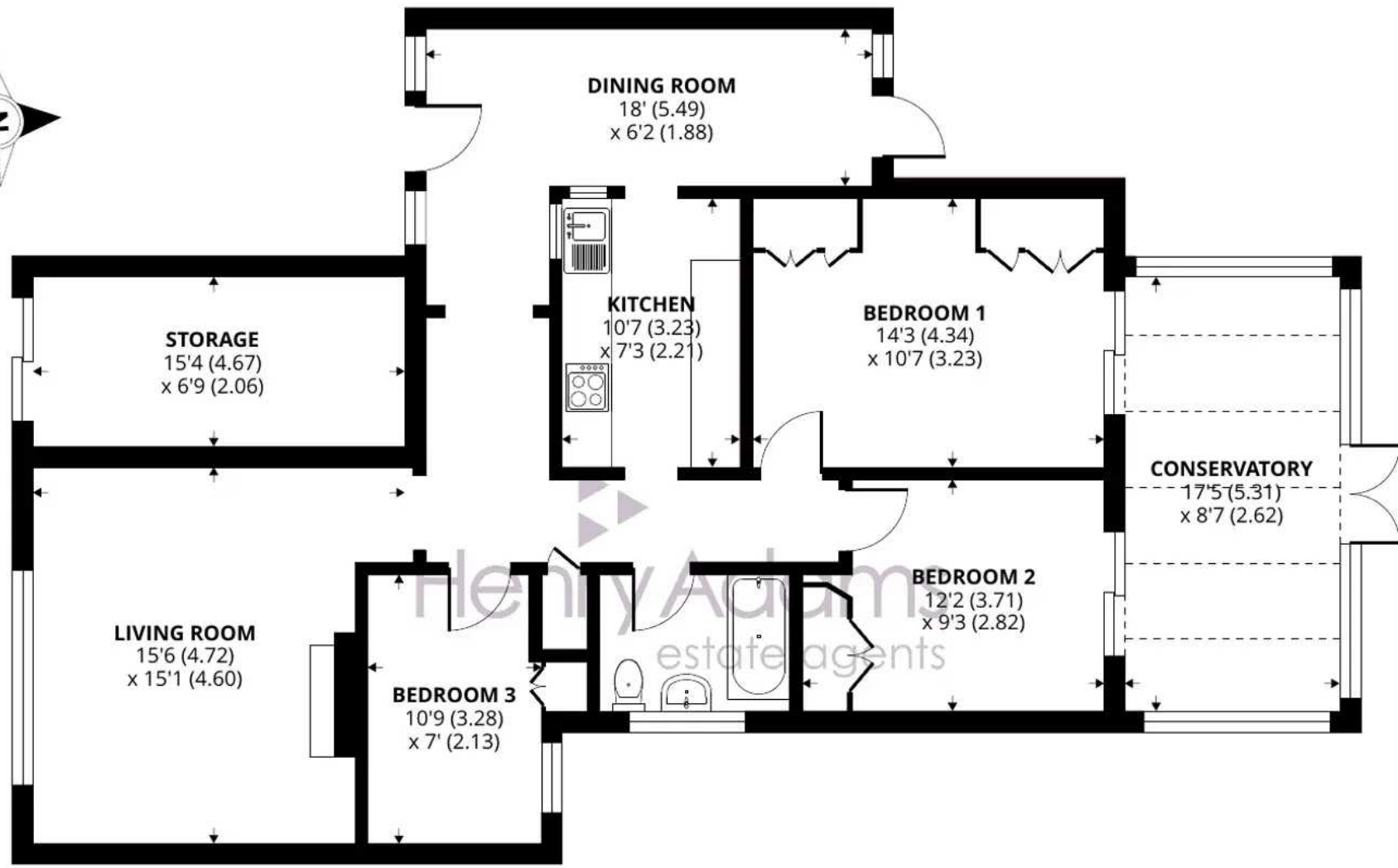
This charming three-bedroom semi-detached bungalow offers spacious and comfortable living in a popular residential area. The property boasts a large living room with a striking feature fireplace complete with a log burner. This creates a cosy and inviting atmosphere for relaxing or entertaining guests. The inclusion of a conservatory adds an additional element of bright and airy living space, perfect for enjoying the peaceful surrounding area.

Externally, the property boasts convenient off-road parking for multiple vehicles which ensures ease of access for residents and visitors alike. The property also includes a converted garage store space, providing ample storage options for belongings and equipment. With gardens to the front and rear, this property offers a private outdoor sanctuary for enjoying the fresh air. This bright and vibrant bungalow is ideal for those seeking a comfortable and versatile living space in a desirable location.

Council Tax band: C Freehold, EPC: E

- Large Living Room with Feature Fireplace
- Conservatory
- Off Road Parking for Multiple Vehicles
- Converted Garage Store Space
- Gardens Front and Rear
- Three Bedroom Semi-Detached Bungalow





GROUND FLOOR

Approximate Area = 1119 sq ft / 103.9 sq m

Storage = 103 sq ft / 9.5 sq m

Total = 1222 sq ft / 113.4 sq m

For identification only - Not to scale







Henry Adams - Selsey

Henry Adams LLP, 122 High Street, Selsey - PO20 0QE

01243 606789 • selsey@henryadams.co.uk • www.henryadams.co.uk/

Agents Note - Our particulars are for guidance only and are intended to give a fair overall summary of the property. They do not form part of any contract or offer, and should not be relied upon as a statement or representation of fact. Measurements, areas and distances are approximate only. Photographs may include lifestyle shots and pictures of local views. No undertaking is given as to the structural condition of the property, or any necessary consents or the operating ability or efficiency of any