



Pier Street, London, E14  
£3,900pcm

Properly<sup>✓</sup>

Properly<sup>✓</sup>

## Property Description

**BRAND NEW PUB CONVERSION.** This first floor apartment forms part of a newly converted public house. It comprises three bedrooms, two bathrooms, an additional cloakroom and a 31ft dual aspect open plan lounge / kitchen. Arranged over 1098 square feet and featuring high ceilings, exposed brickwork and wood flooring, it is expected to be sought after, get in contact today.





## Key Features

- ✓ Newly converted, first occupation
- ✓ Exposed brickwork
- ✓ High ceilings
- ✓ Wood flooring
- ✓ Dual aspect lounge/kitchen
- ✓ 1.4 miles to Canary Wharf
- ✓ Within 0.4 miles from 3x DLR stations
- ✓ Three bedrooms
- ✓ Two bathrooms + further cloakroom
- ✓ Furnished or unfurnished





















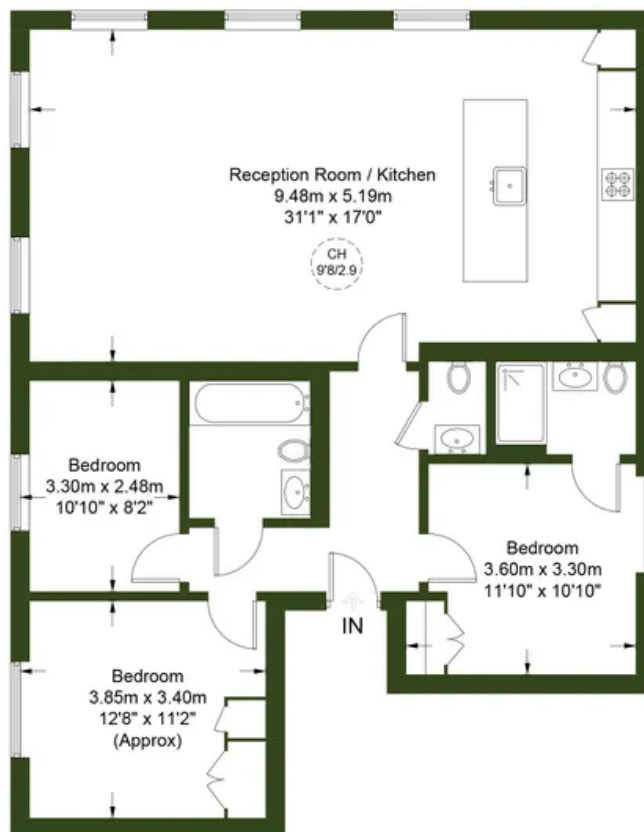


# First Floor



## Pier Street, E14

Approximate Gross Internal Area = 1098 sq ft / 102 sq m



First Floor



Certified  
Property  
Measurer

This plan is for layout guidance only. Not drawn to scale unless stated. Windows and door openings are approximate. Whilst every care is taken in the preparation of this plan, please check all dimensions, shapes and compass bearings before making any decisions reliant upon them. (ID901430)

Properly<sup>®</sup>

Properly

07973793670

lee.wheatley@properly.space

Properly<sup>✓</sup>