



Pier Street, London, E14
£3,900pcm

Properly ✓

Properly ✓

Property Description

This brand new ground and first floor maisonette forms part of a brand new development. Enjoying it's own access it comprises three bedrooms, two bathrooms, downstairs cloakroom and an open plan living room / kitchen of over 31ft. Features include wood flooring, high ceilings, terrace and balcony over 1218 square feet. Get in touch today to avoid disappointment.



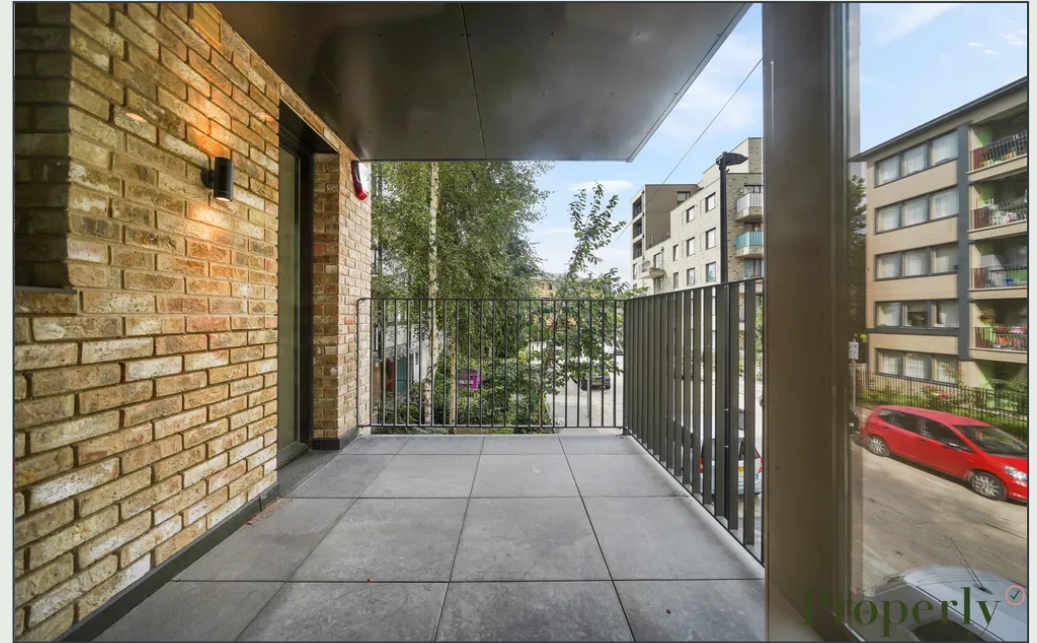
Key Features

- ✓ Newly constructed, first occupation
- ✓ Own access
- ✓ High ceilings
- ✓ Wood flooring
- ✓ Patio and balcony
- ✓ 1.4 miles to Canary Wharf
- ✓ Within 0.4 miles from 3x DLR stations
- ✓ Three bedrooms
- ✓ Two bathrooms + further cloakroom
- ✓ Furnished or unfurnished















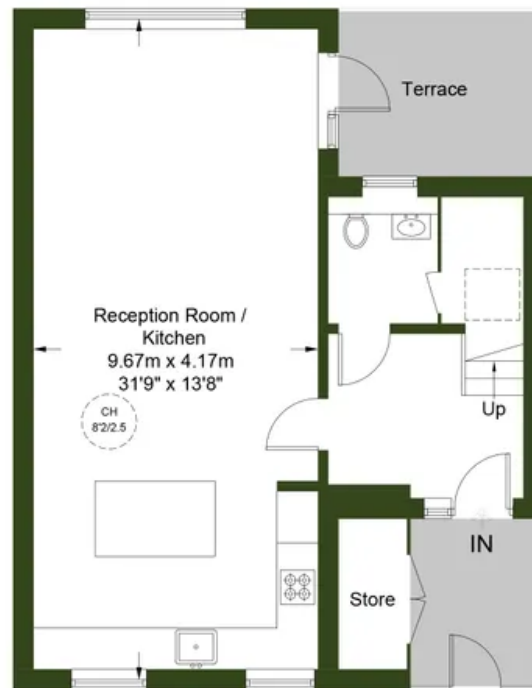
Pier Street, E14

Approximate Gross Internal Area = 1211 sq ft / 112.5 sq m
(Excluding Reduced Headroom)

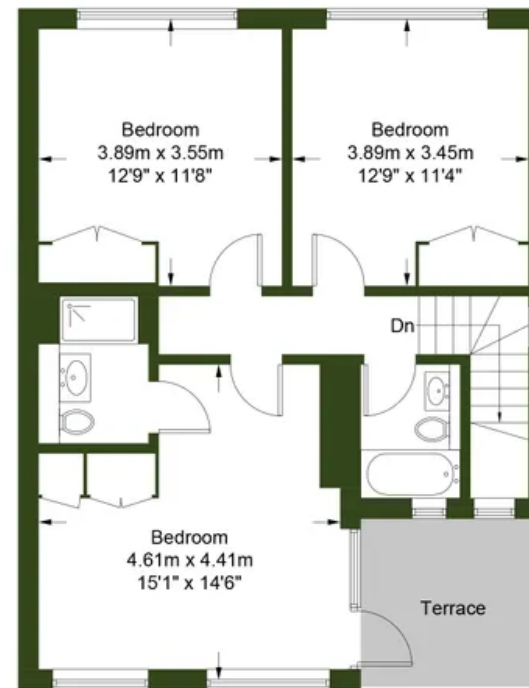
Reduced Headroom = 7 sq ft / 0.7 sq m

Total = 1218 sq ft / 113.2 sq m
(Excluding Store)

 = Reduced headroom below 1.5m / 5'0"



Ground Floor



First Floor



Certified
Property
Measurer

This plan is for layout guidance only. Not drawn to scale unless stated. Windows and door openings are approximate. Whilst every care is taken in the preparation of this plan, please check all dimensions, shapes and compass bearings before making any decisions reliant upon them. (ID901429)

Properly[®]

Properly

07973793670

lee.wheatley@properly.space

Properly[✓]