



3 Fernworthy Park, Copplestone, EX17 5LX

£795 PCM

HELMORES
SINCE 1699

3 Fernworthy Park

Copplestone, Crediton

- Very well presented, 2 bedroomed semi-detached house
- Open plan and well equipped kitchen/living room
- Sizeable and enclosed lawned rear garden
- Driveway parking and garage
- uPVC double glazing and central heating

This modern semi-detached house is pleasantly situated in the popular Mid-Devon village of Copplestone, facing south and enjoying excellent views over the rooftops to countryside beyond. It is found in very good order throughout and enjoys a good sized lawned garden, garage and parking, plus gas central heating and uPVC double glazing. The property offers excellent two bedroomed accommodation with a really nice bathroom suite, as well as open plan living room and modern kitchen/breakfast room with integrated dishwasher, fridge & freezer, built in electric oven and gas hob. The kitchen in turn opens onto the good sized and enclosed lawned, rear garden. To the front is an additional pleasant garden, off-road parking and an attached garage (the garage also has rear access)

The house is located just off the centre of the village within a short walk of all amenities including the well regarded primary school, village stores and public house. Copplestone also benefits from regular bus and train services to Crediton, Exeter and Barnstaple. The property was built during the mid 1980s, being conventionally constructed of rendered brick with an insulated tiled roof. It has uPVC double glazing and front windows plus gas fired central heating.

HELMORES
SINCE 1699

November

Rent - £795 PCM





GARDEN

GARAGE

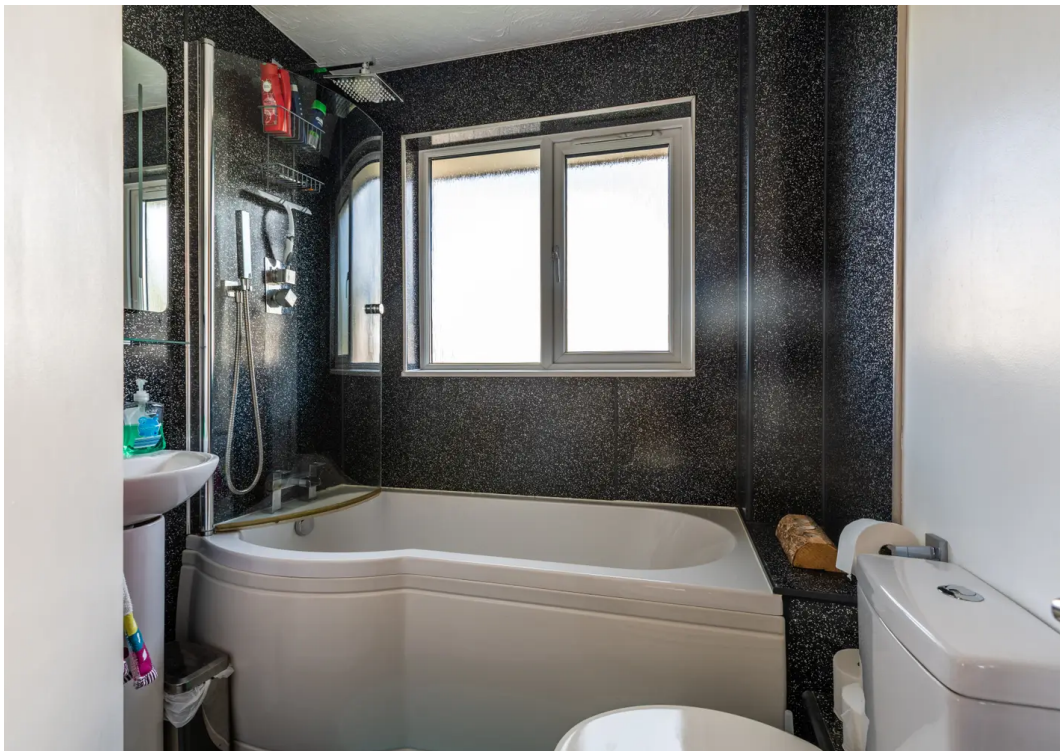
Single Garage

OFF ROAD

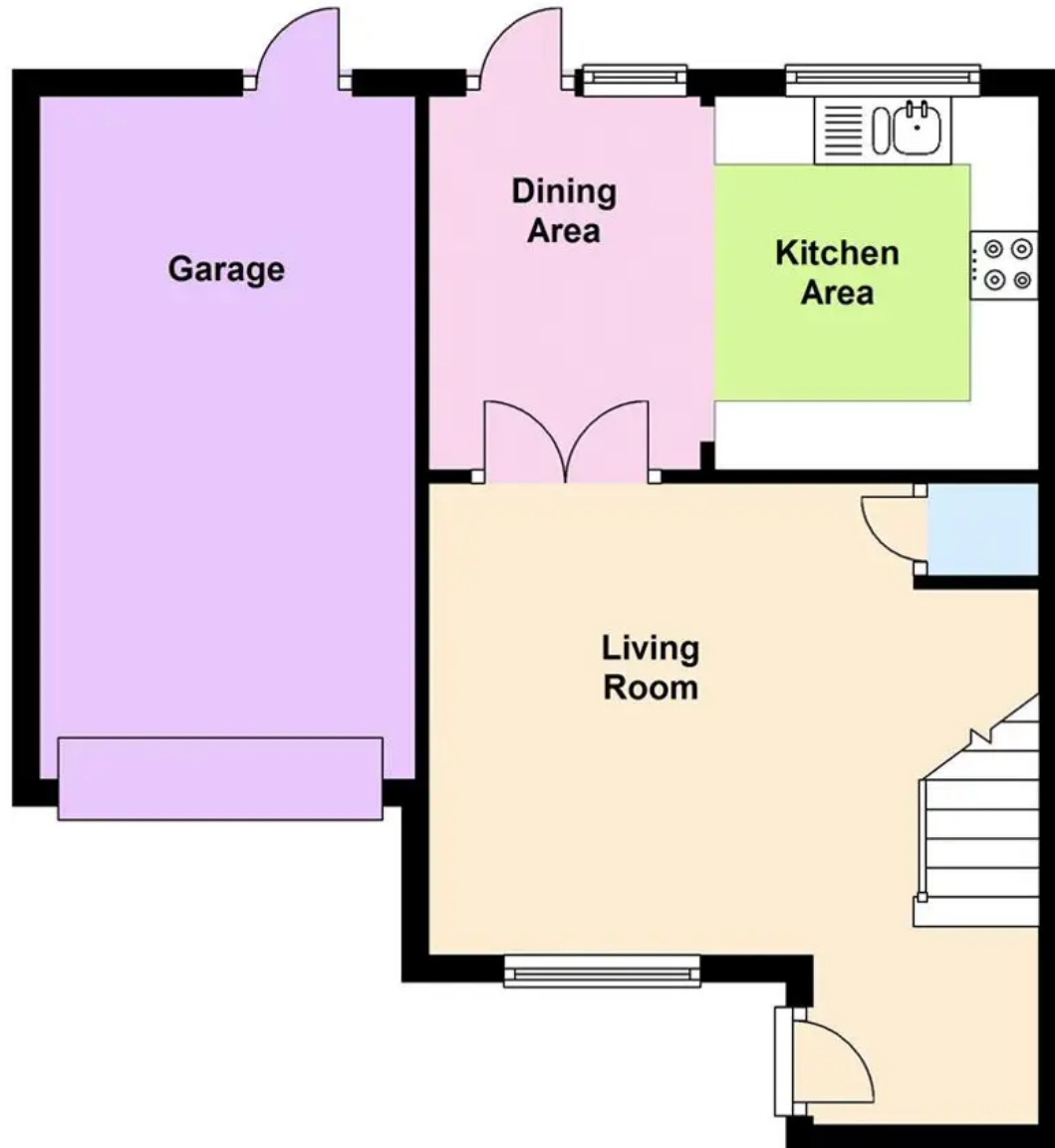
1 Parking Space



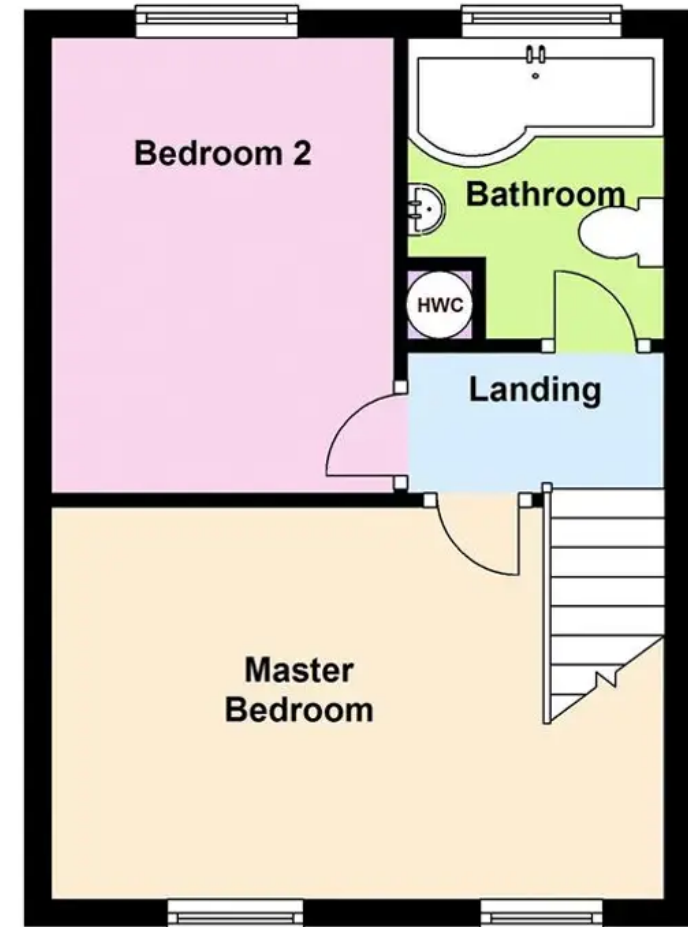
HELMORES
SINCE 1699



Ground Floor



First Floor





HELMORES
SINCE 1699