



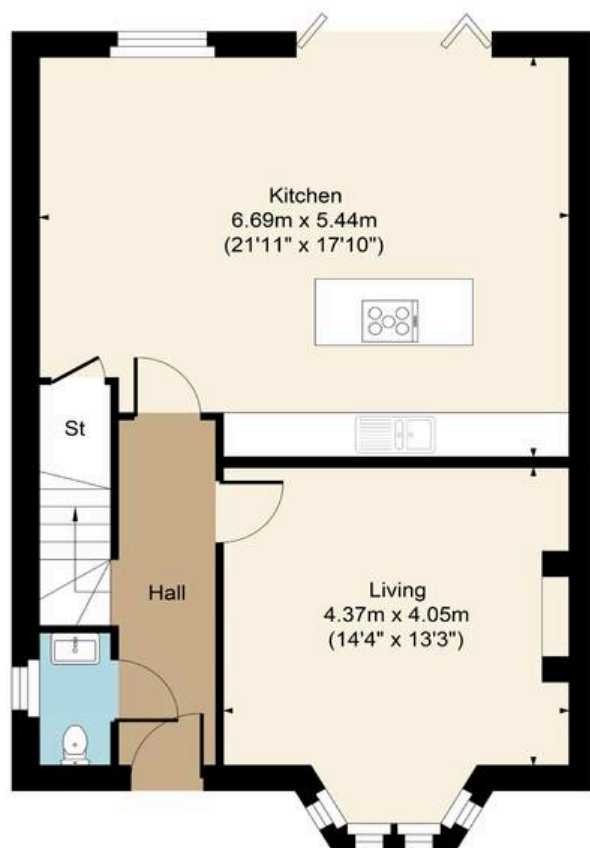
Station Road, Bourton-on-the-Water



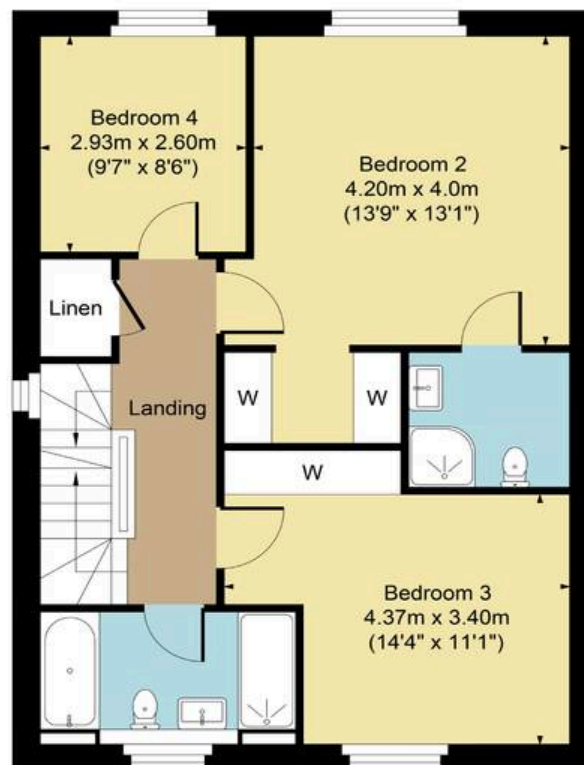




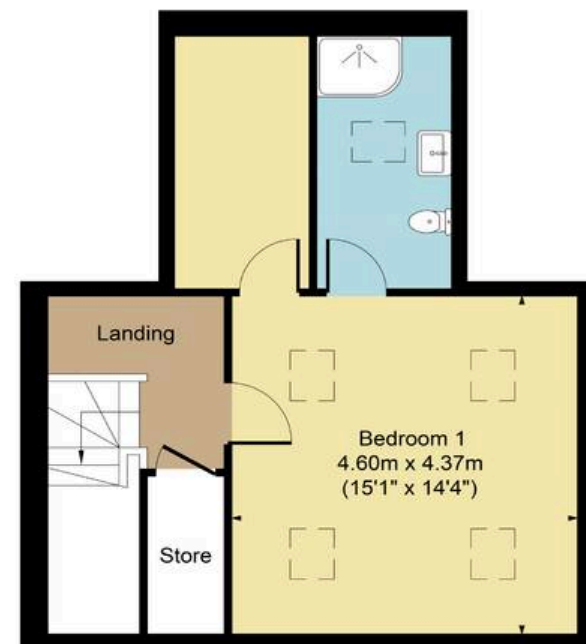
Total Approx. Gross Area:- 173.56 sq.m. 1868 sq.ft.



Ground Floor



First Floor



Second Floor

FOR ILLUSTRATIVE PURPOSES ONLY-NOT TO SCALE  
The position & size of doors, windows, appliances and other features are approximate only.  
□ Denotes restricted head height  
[www.dmlphotography.co.uk](http://www.dmlphotography.co.uk)

**Harrison Hardie**

High Street, Bourton-on-the-Water, GL54 2AN

01451 822977 [harrisonhardie.co.uk](http://harrisonhardie.co.uk)