



Bartlams.

The Byre, Trysull Farm Barns Seisdon Road - WV5 7JF
£400,000



The Byre

Trysull Farm Barns Seisdon Road,
Wolverhampton

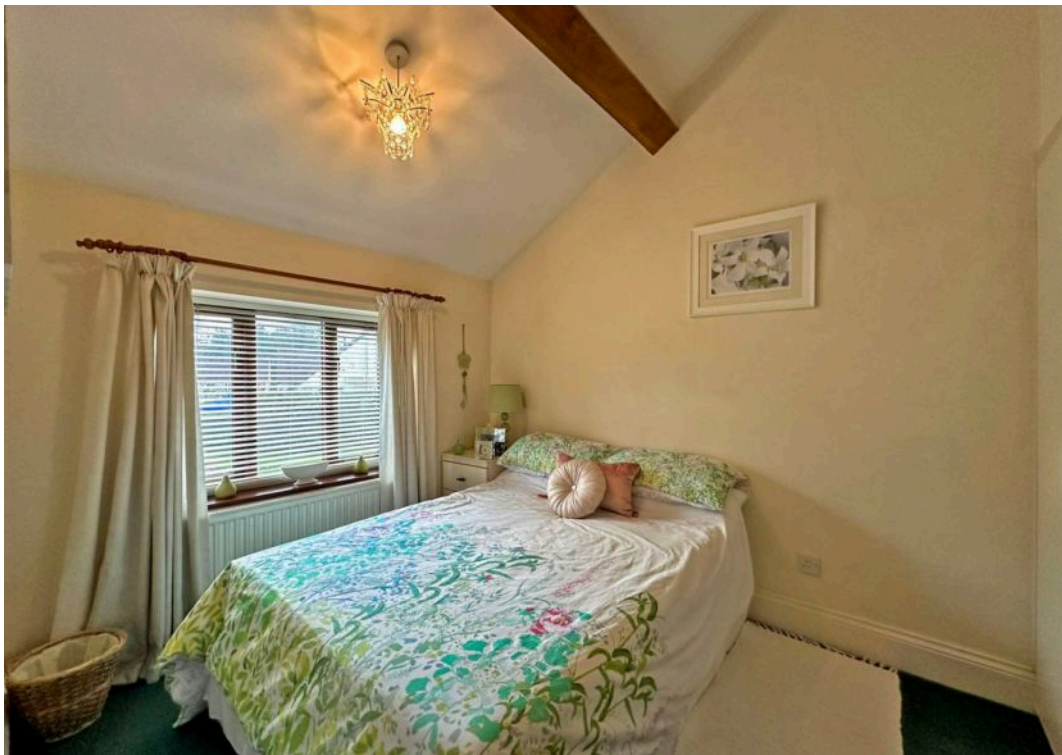
Delightfully rustic and elegantly presented three bedroom mid-terraced Barn Conversion, nicely tucked away within a pleasant setting in the heart of this historic South Staffordshire village yet only about 7 miles from the City centre and 2 miles from Wombourne village where a comprehensive range of shopping facilities and amenities including schools of all grades can be found.

The Byre forms part of a small select development which has now fully matured to create a pleasant environment of exceptional appeal. The superbly presented interior layout includes: Entrance Hall with tiled floor and Fitted Guest's Cloakroom off; elegant through Lounge with period style fireplace; stunning 'L' shaped Kitchen/Breakfast Room including slot-in Range Cooker, integrated washing machine, dishwasher and fridge/freezer; Large master bedroom with En-Suite Shower Room; two further bedrooms including a second double-bedroom with built-in storage, both with wardrobes and exposed beams; House Bathroom with overbath shower; Garage in shared courtyard; Gas CH from a Worcester combination boiler. Enclosed lawned rear garden.

We are advised by our client that this property is:
Freehold, Council Tax Band - E, EPC - tbc

B.

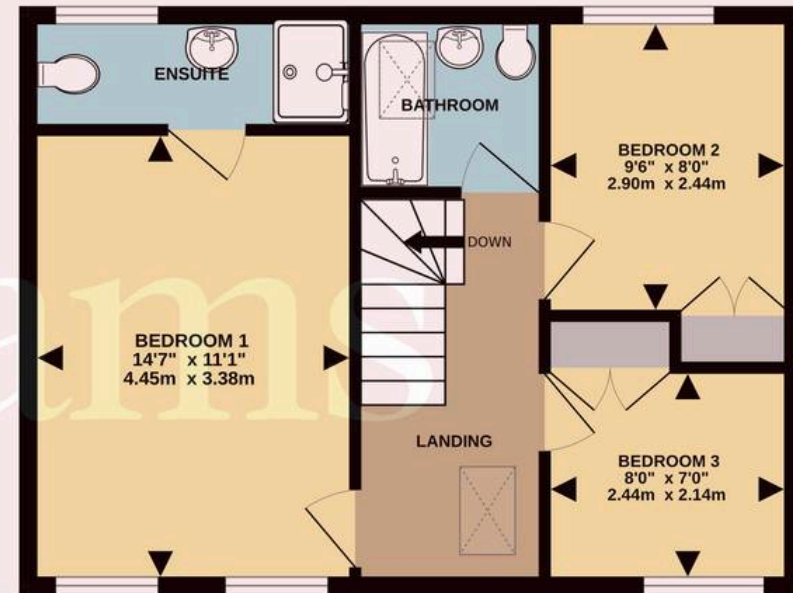




GROUND FLOOR
445 sq.ft. (41.4 sq.m.) approx.



1ST FLOOR
454 sq.ft. (42.2 sq.m.) approx.



TOTAL FLOOR AREA : 899 sq.ft. (83.5 sq.m.) approx.

Whilst every attempt has been made to ensure the accuracy of the floorplan contained here, measurements of doors, windows, rooms and any other items are approximate and no responsibility is taken for any error, omission or mis-statement. This plan is for illustrative purposes only and should be used as such by any prospective purchaser. The services, systems and appliances shown have not been tested and no guarantee as to their operability or efficiency can be given.

Made with Metropix ©2025

Bartlams

Bartlams Ltd, The House On The Green High Street - WV5 9DP

01902894141

wombourne@bartlams.co.uk

www.bartlams.co.uk/

NOTICE: These particulars, although believed to be correct, do not constitute any part of an offer or contract. All statements contained in these particulars as to this property are made without responsibility and are not to be relied upon as statements or representations of warranty whatsoever in relation to property. Any intending purchaser must satisfy themselves by inspection or otherwise as to the correctness each of the statements contained in these particulars. All measurements are approximate and for illustrative purposes only.

Photographs are produced for general information and it must not be inferred that any item shown is included in the sale. DISCLOSURE: As a professional Estate Agency our clients employ us to look after their best interests. This includes providing them with full details of offers made to purchase their property. To ensure our obligations to our clients are met we need to check the status of all potential purchasers. If you make an offer on this property we will ask a member of The Finance Family to contact you to verify your status. They are a leading firm of Independent Financial Advisers and Mortgage Brokers. Should they transact any business resulting from our introduction then we may receive a commission.

