

## 44 Dewsland Street, Milford Haven

£140,000 Freehold

Spacious & Versatile Terraced House • 3 Double Bedrooms, Large Reception Room, Kitchen Diner • South Facing Garden & Rear Access • Ideal First Home / Growing Family Home • Popular Residential Area







3 bedroom spacious & versatile terraced house in a popular residential area in Milford lending itself to being an ideal first home or growing family home. South facing garden with rear access.

Council Tax band: C

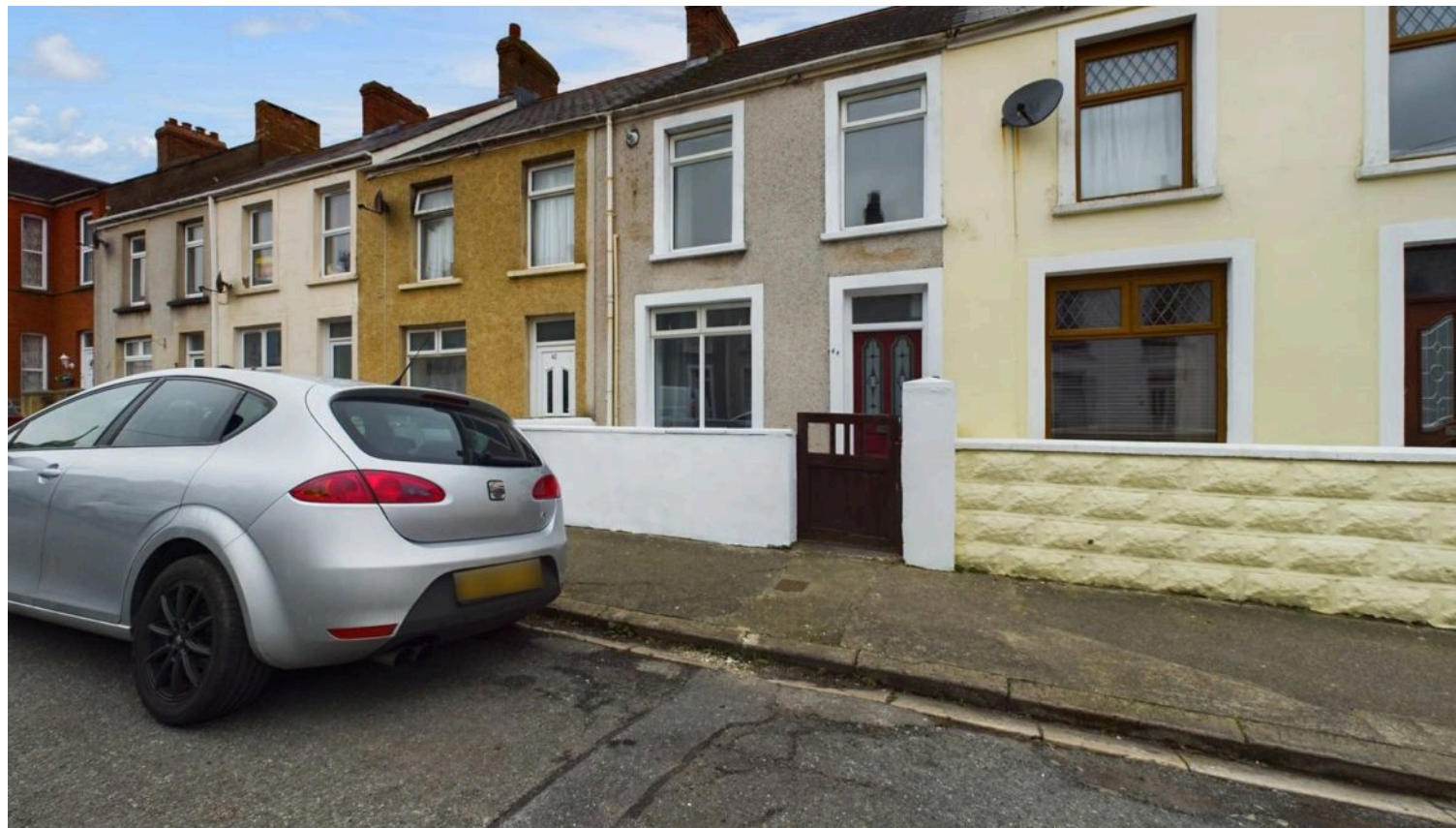
Tenure: Freehold

EPC Energy Efficiency Rating: D

EPC Environmental Impact Rating: E







#### Entry

3' 11" x 3' 2" (1.20m x 0.96m)

#### Reception Room 1

11' 2" x 10' 7" (3.41m x 3.23m)

#### Reception Room 2

12' 1" x 11' 1" (3.68m x 3.38m)

#### Kitchen Dining Room

16' 5" x 14' 7" (5.01m x 4.45m)

#### Bathroom

9' 7" x 8' 0" (2.91m x 2.45m)

#### First Floor Landing

#### Bedroom 1

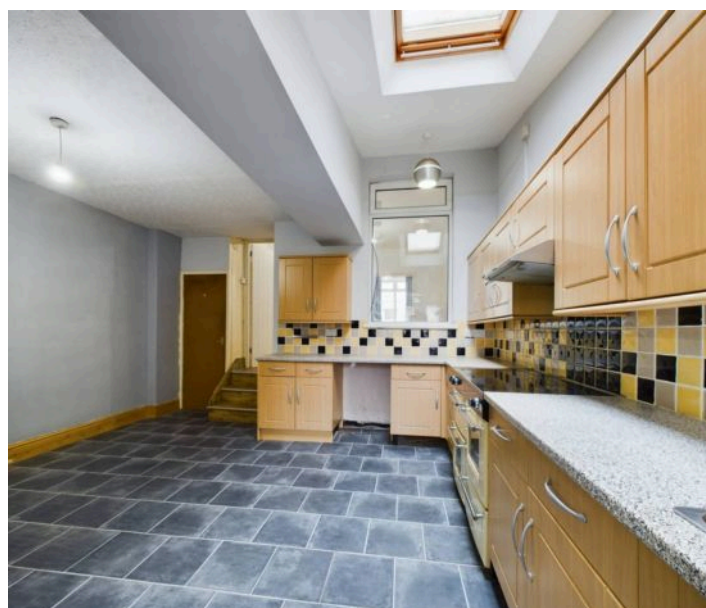
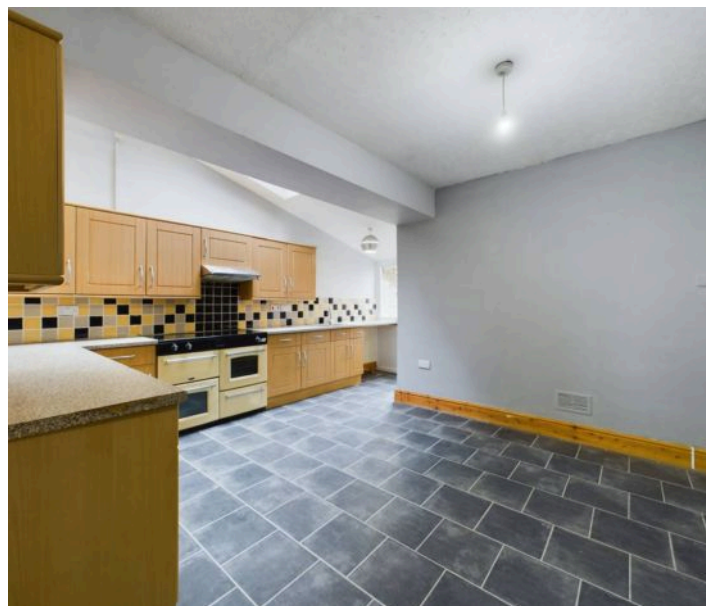
14' 3" x 11' 7" (4.34m x 3.52m)

#### Bedroom 2

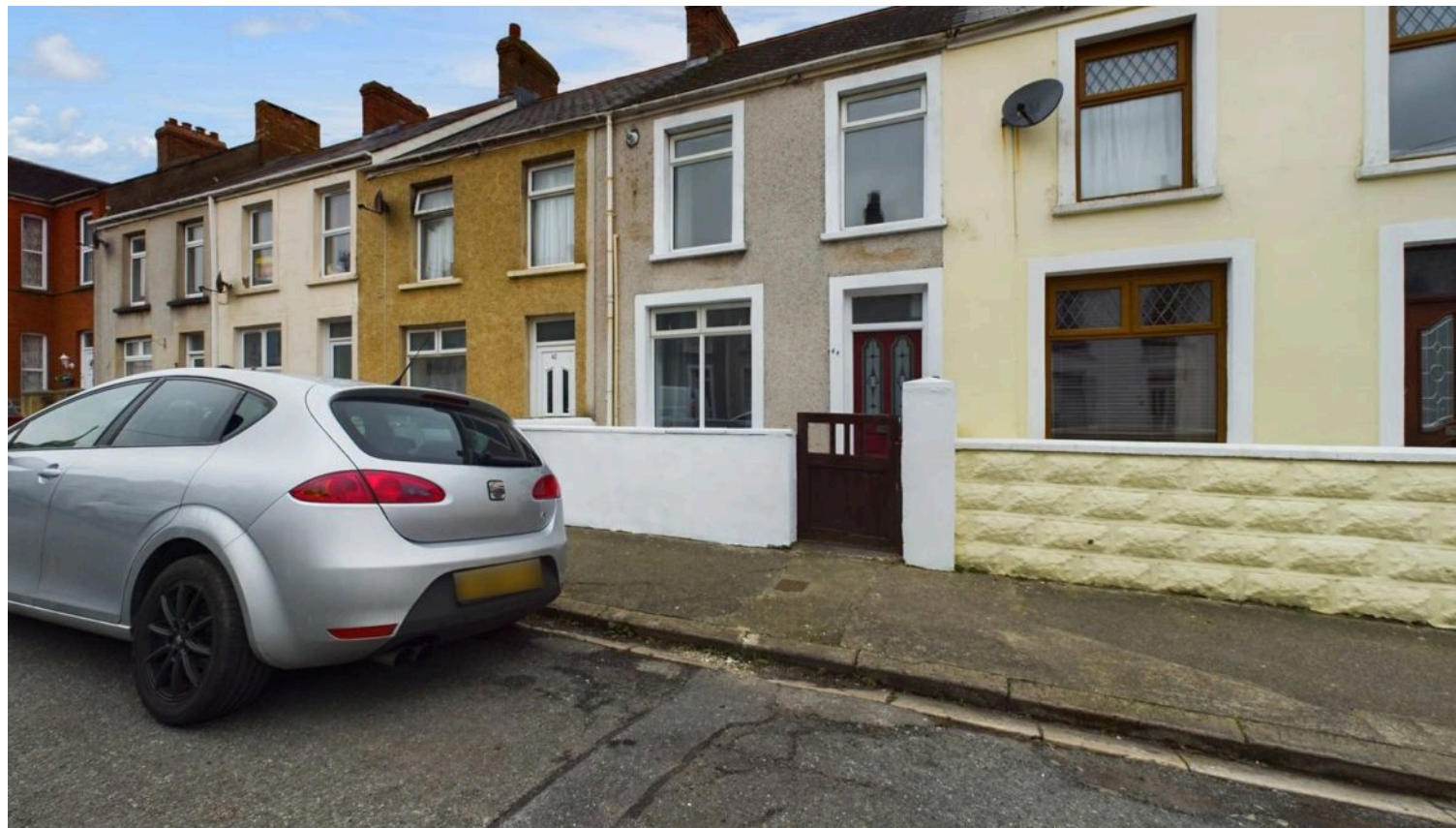
11' 11" x 8' 4" (3.62m x 2.55m)

#### Bedroom 3

11' 9" x 8' 2" (3.59m x 2.48m)







#### Entry

3' 11" x 3' 2" (1.20m x 0.96m)

#### Reception Room 1

11' 2" x 10' 7" (3.41m x 3.23m)

#### Reception Room 2

12' 1" x 11' 1" (3.68m x 3.38m)

#### Kitchen Dining Room

16' 5" x 14' 7" (5.01m x 4.45m)

#### Bathroom

9' 7" x 8' 0" (2.91m x 2.45m)

#### First Floor Landing

#### Bedroom 1

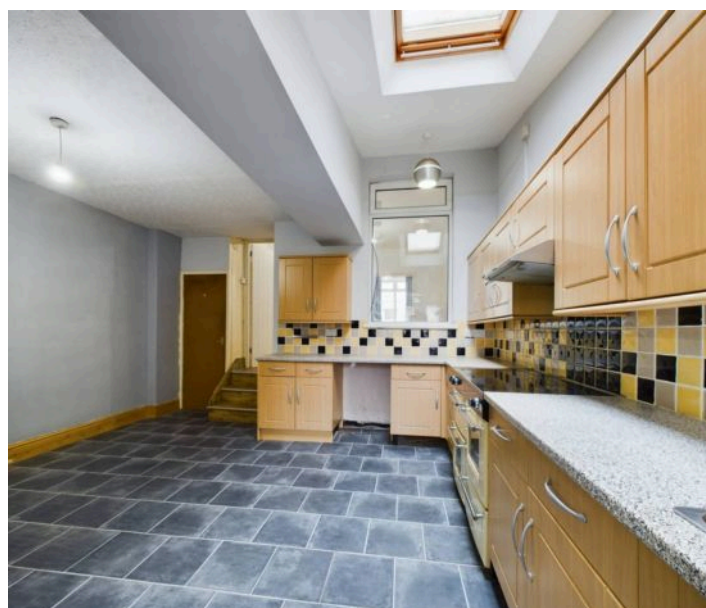
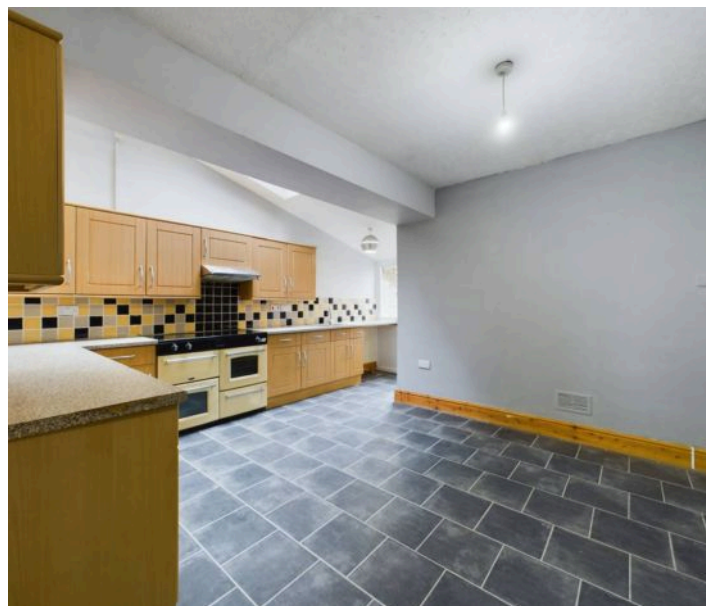
14' 3" x 11' 7" (4.34m x 3.52m)

#### Bedroom 2

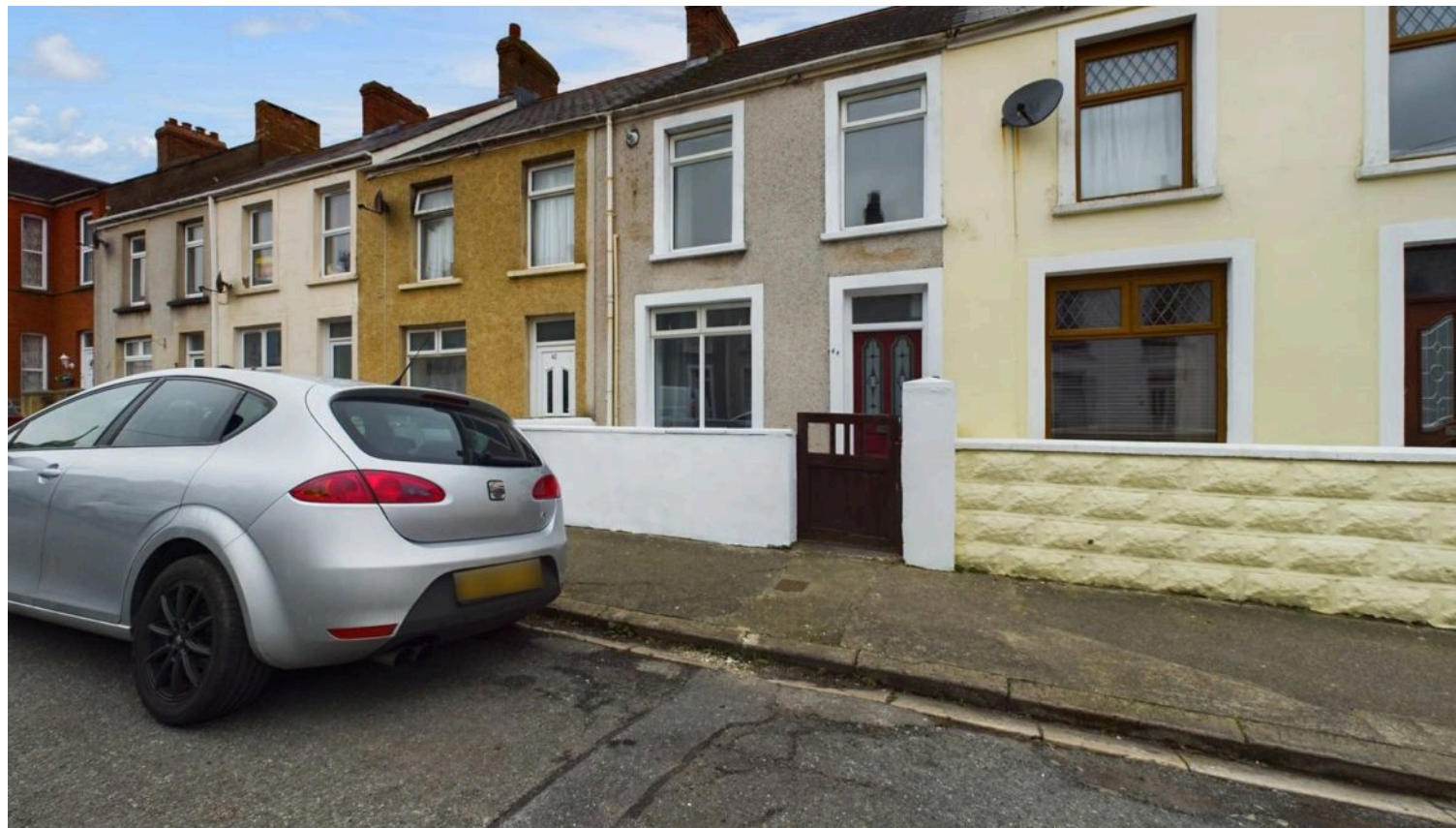
11' 11" x 8' 4" (3.62m x 2.55m)

#### Bedroom 3

11' 9" x 8' 2" (3.59m x 2.48m)







#### Entry

3' 11" x 3' 2" (1.20m x 0.96m)

#### Reception Room 1

11' 2" x 10' 7" (3.41m x 3.23m)

#### Reception Room 2

12' 1" x 11' 1" (3.68m x 3.38m)

#### Kitchen Dining Room

16' 5" x 14' 7" (5.01m x 4.45m)

#### Bathroom

9' 7" x 8' 0" (2.91m x 2.45m)

#### First Floor Landing

#### Bedroom 1

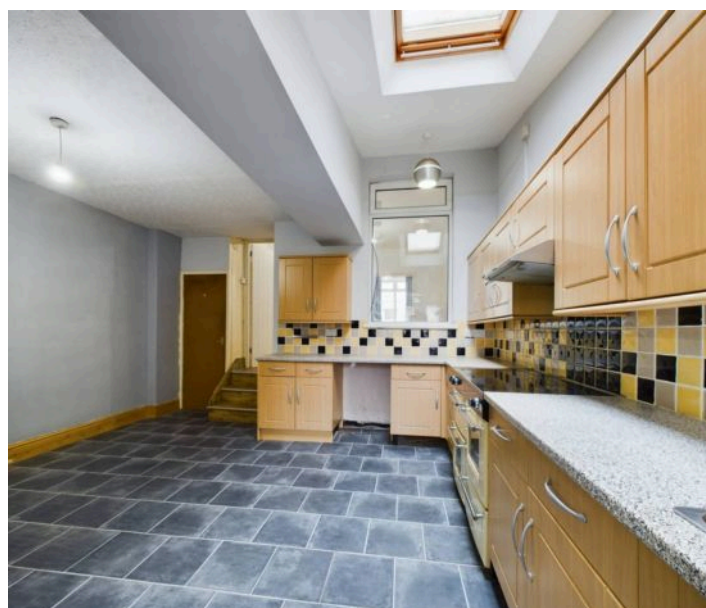
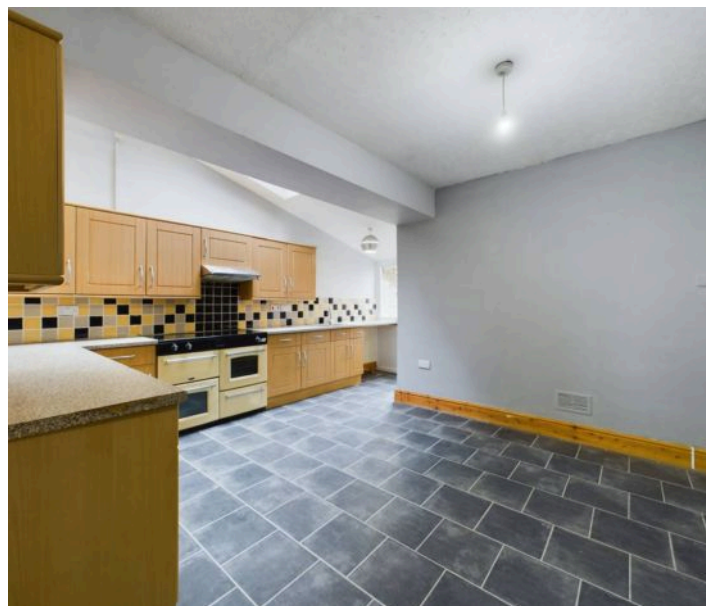
14' 3" x 11' 7" (4.34m x 3.52m)

#### Bedroom 2

11' 11" x 8' 4" (3.62m x 2.55m)

#### Bedroom 3

11' 9" x 8' 2" (3.59m x 2.48m)







GARDEN





