



Montgomery House, 24 Gunner Grove - B75 7HE
£195,000





Montgomery House, Sutton Coldfield

The secure communal entrance leads to a welcoming hallway with a tiled floor, setting the tone for the rest of the property. The apartment comprises of a lounge and separate dining area that offer a versatile living space, ideal for relaxing or entertaining. The re-fitted kitchen features modern appliances and plenty of storage, making meal preparation a pleasure. Two well-appointed bedrooms, provide ample space for residents or guests, with the principal bedroom boasting an excellent range of built in wardrobes along with a luxurious en-suite, while there is an additional modern family bathroom for added convenience. Throughout the property, the attention to detail and high-quality finishes are evident, creating a sense of luxury and sophistication.

The apartment also benefits from allocated parking, ensuring a stress-free arrival home, and well-maintained communal gardens for residents to enjoy.



With its convenient location, modern amenities, and inviting atmosphere, this property is a must-see for those looking for a stylish and comfortable home in a desirable location. Viewing is strongly recommended to fully appreciate all that this exceptional apartment has to offer.





FEATURES:

- Stunning ground floor apartment
- Highly sought after modern development
- Two bedrooms, two bathrooms
- Lounge and separate dining area
- Re fitted kitchen
- Allocated parking
- Well maintained communal gardens
- Viewing strongly recommended

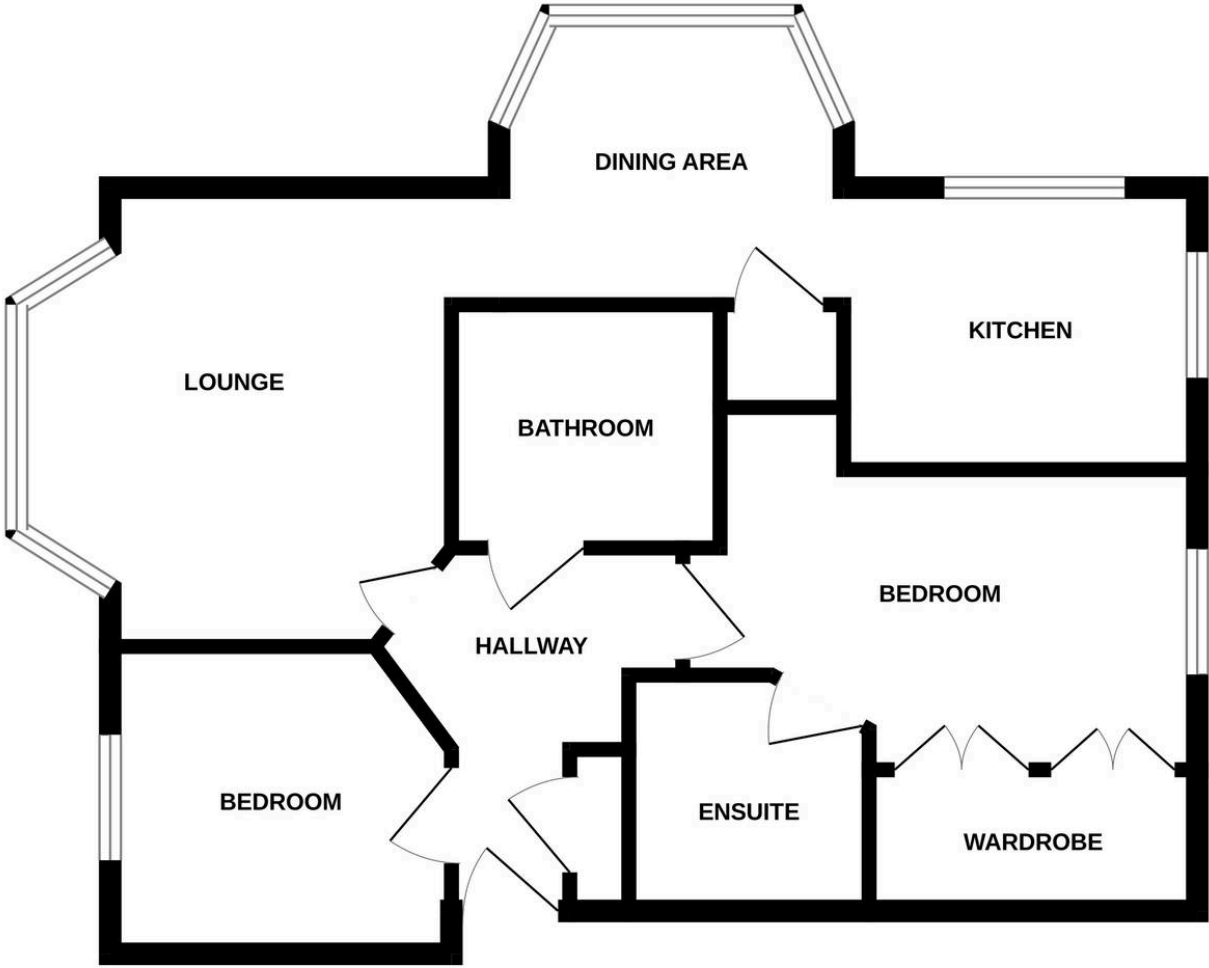
INTERESED?

fouroaks@moorhouse-property.co.uk

0121 308 3355



GROUND FLOOR
56.0 sq.m. (603 sq.ft.) approx.



TOTAL FLOOR AREA : 56.0 sq.m. (603 sq.ft.) approx.

Whilst every attempt has been made to ensure the accuracy of the floorplan contained here, measurements of doors, windows, rooms and any other items are approximate and no responsibility is taken for any error, omission or mis-statement. This plan is for illustrative purposes only and should be used as such by any prospective purchaser. The services, systems and appliances shown have not been tested and no guarantee as to their operability or efficiency can be given.

Made with Metropix ©2025



You can include any text here. The text can be modified upon generating your brochure.