



Bartlams.

7 Bankside, Wombourne - WV5 8BE
£239,950



7 Bankside

Wombourne, Wolverhampton

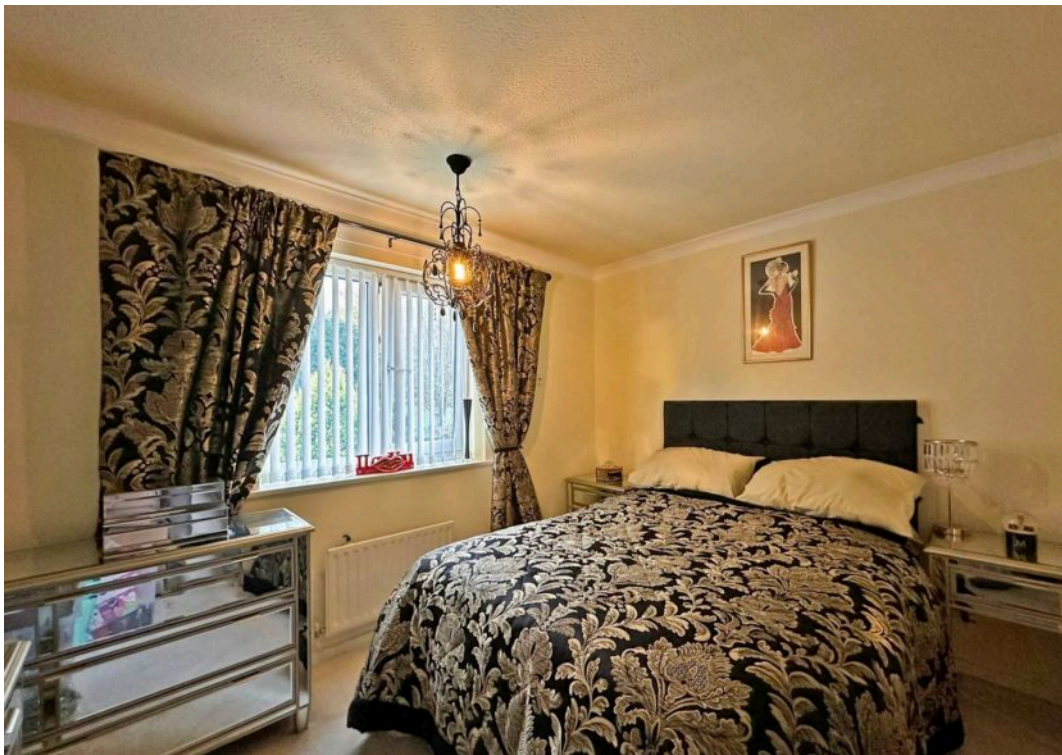
Explore this well-proportioned two-bedroom mid-terraced home, ideally located close to excellent schools and the vibrant village centre with its array of amenities. Nestled in a sought-after modern estate, the property benefits from off-road parking at the front and a low-maintenance rear garden, making it a fantastic first-time home for those looking to settle in Wombourne.

Step inside to discover a thoughtfully laid-out interior. The spacious entrance hall leads to multiple rooms and the staircase to the first floor. The living room, situated at the rear, features an electric fireplace and French doors opening onto the garden. The fitted kitchen is equipped with a wide range of wall and base units, an integrated oven, gas hob, stainless steel sink with drainer, and space for a washing machine and fridge freezer. Upstairs, the property boasts two generously sized bedrooms. The principal bedroom is located at the rear, while the second bedroom, positioned at the front, benefits from built-in storage space. The stylish family shower room is fitted with a walk-in shower, WC, and wash hand basin. The exterior complements the home beautifully, with off-road parking at the front and a private, low-maintenance rear garden. The garden features artificial lawn bordered by shrubs and plants, creating a charming outdoor space perfect for hosting friends and family.

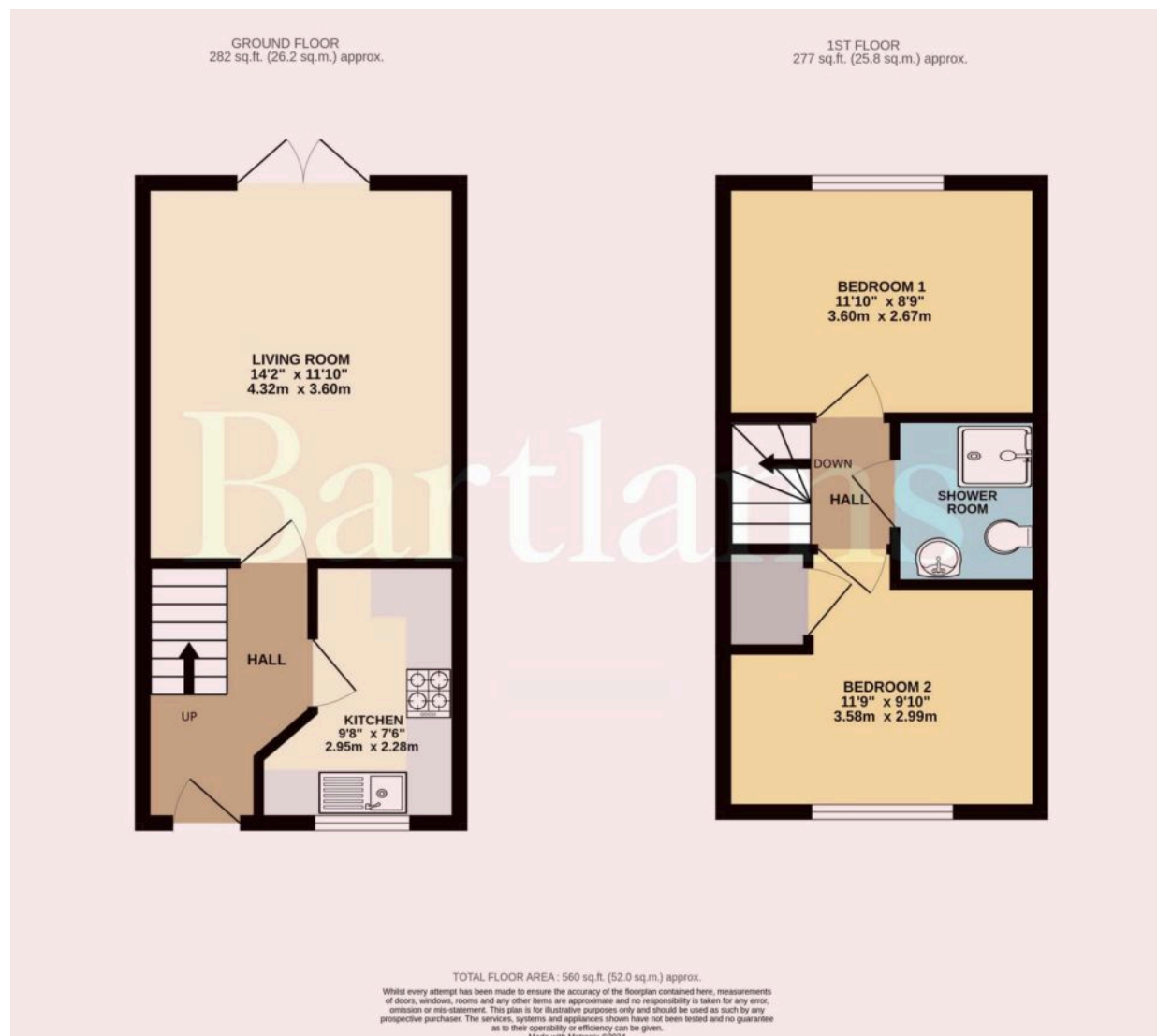
Freehold, Council Tax Band - B, EPC - C



B.







Bartlams

Bartlams Ltd, The House On The Green High Street - WV5 9DP

01902 894141

wombourne@bartlams.co.uk

www.bartlams.co.uk

NOTICE: These particulars, although believed to be correct, do not constitute any part of an offer or contract. All statements contained in these particulars as to this property are made without responsibility and are not to be relied upon as statements or representations of warranty whatsoever in relation to property. Any intending purchaser must satisfy themselves by inspection or otherwise as to the correctness each of the statements contained in these particulars. All measurements are approximate and for illustrative purposes only.

Photographs are produced for general information and it must not be inferred that any item shown is included in the sale. DISCLOSURE: As a professional Estate Agency our clients employ us to look after their best interests. This includes providing them with full details of offers made to purchase their property. To ensure our obligations to our clients are met we need to check the status of all potential purchasers. If you make an offer on this property we will ask a member of The Finance Family to contact you to verify your status. They are a leading firm of Independent Financial Advisers and Mortgage Brokers. Should they transact any business resulting from our introduction then we may receive a commission.

