



The Maples, Harlow

£350,000 Freehold

3 Bedrooms • Garage En-Bloc • Rear Access • Fully Refurbished • Extended



Accommodation Comprises:

Porch

Entrance Hall

Lounge

15' 10" x 11' 7" (4.83m x 3.53m)

Kitchen/Diner

15' 10" x 9' 3" (4.83m x 2.82m)

Second Reception Room

9' 1" x 7' 3" (2.77m x 2.21m)

W/C

Landing

Bedroom One

11' 11" x 11' 2" (3.63m x 3.40m)

Bedroom Two

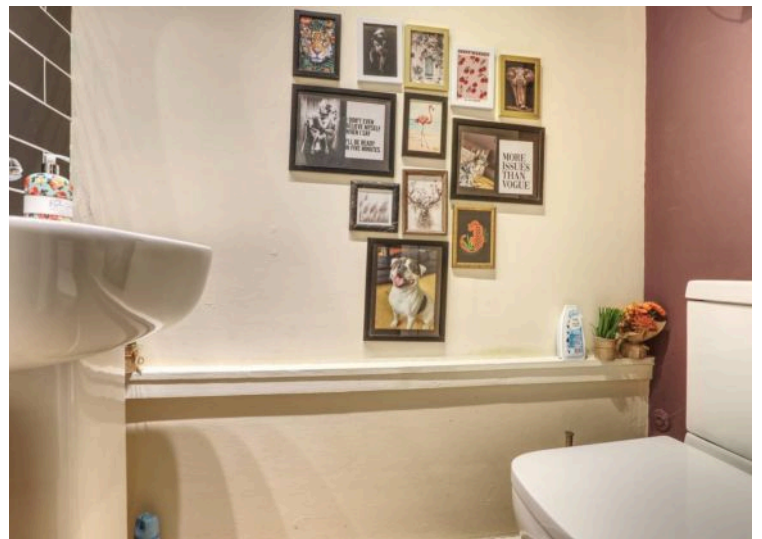
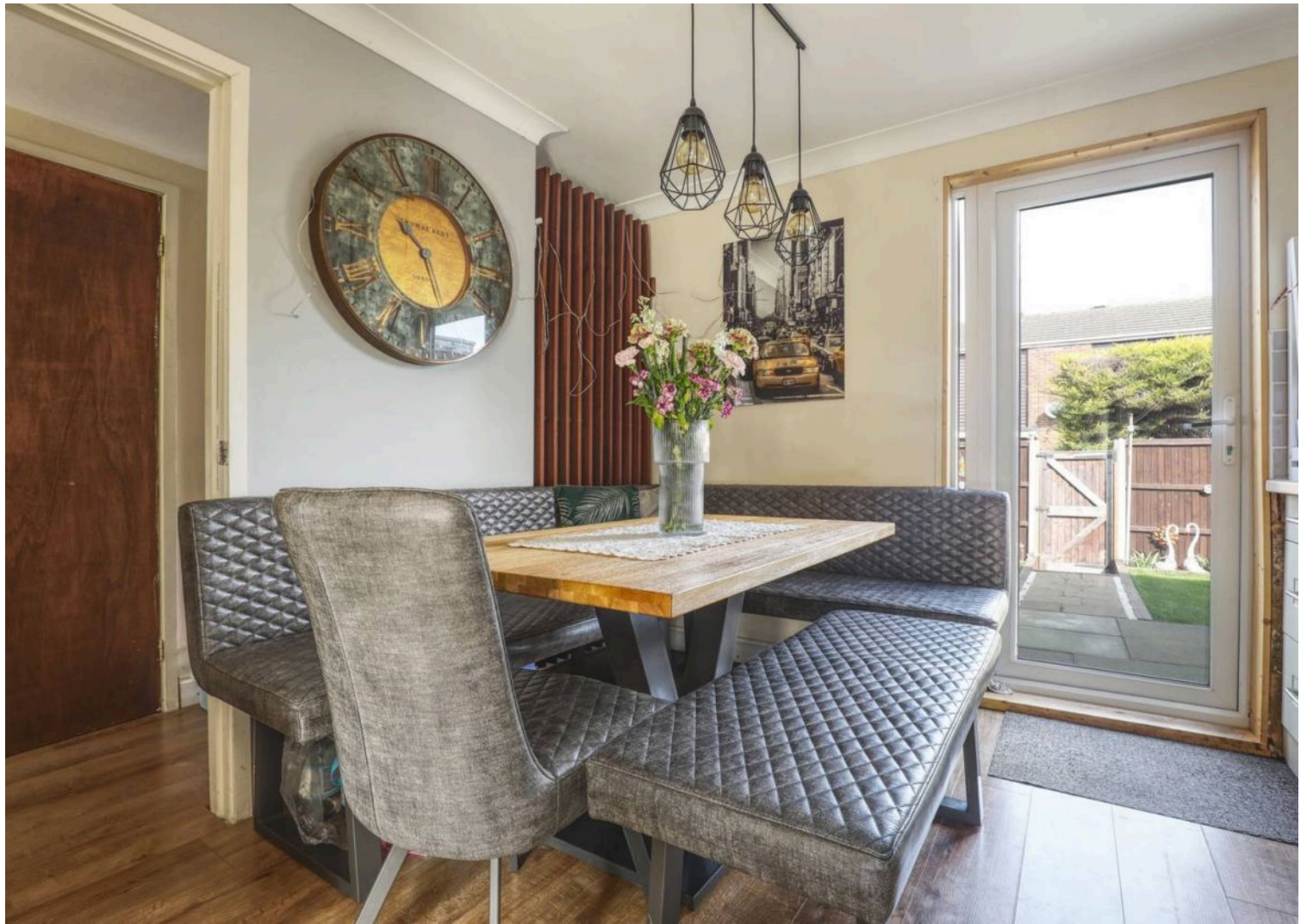
11' 2" x 9' 0" (3.40m x 2.74m)

Bedroom Three

8' 6" x 11' 3" (2.59m x 3.43m)

Shower Room

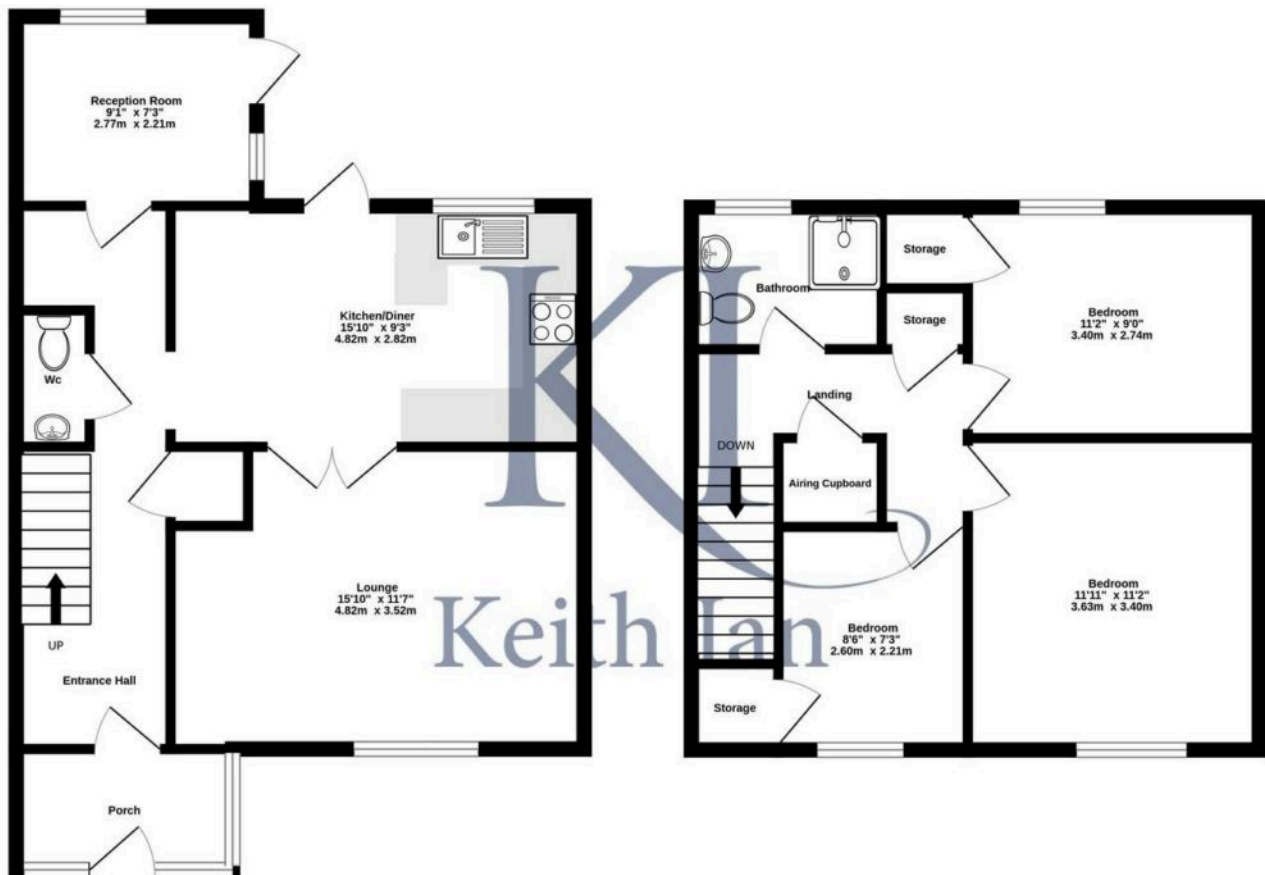






Ground Floor
555 sq.ft. (51.5 sq.m.) approx.

1st Floor
450 sq.ft. (41.8 sq.m.) approx.



TOTAL FLOOR AREA : 1005 sq.ft. (93.3 sq.m.) approx.

Whilst every attempt has been made to ensure the accuracy of the floorplan contained here, measurements of doors, windows, rooms and any other items are approximate and no responsibility is taken for any error, omission or mis-statement. This plan is for illustrative purposes only and should be used as such by any prospective purchaser. The services, systems and appliances shown have not been tested and no guarantee as to their operability or efficiency can be given.
Made with Metropix ©2025