

77 Broomfield Avenue, Broxbourne

Freehold

Freehold House • Contemporary Kitchen • Modern Bathroom • Gas Central Heating • Allocated Parking • Front/Side Garden



Entrance Porch

Lounge

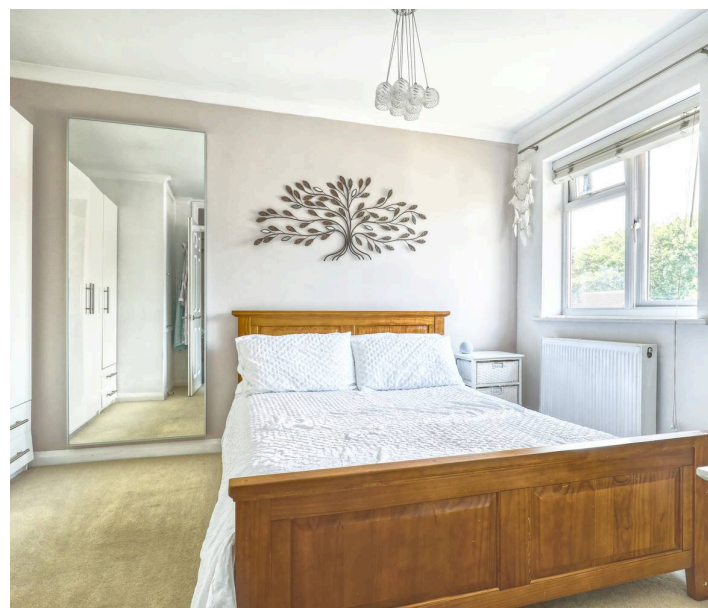
Kitchen

Stairs To First Floor

Bedroom

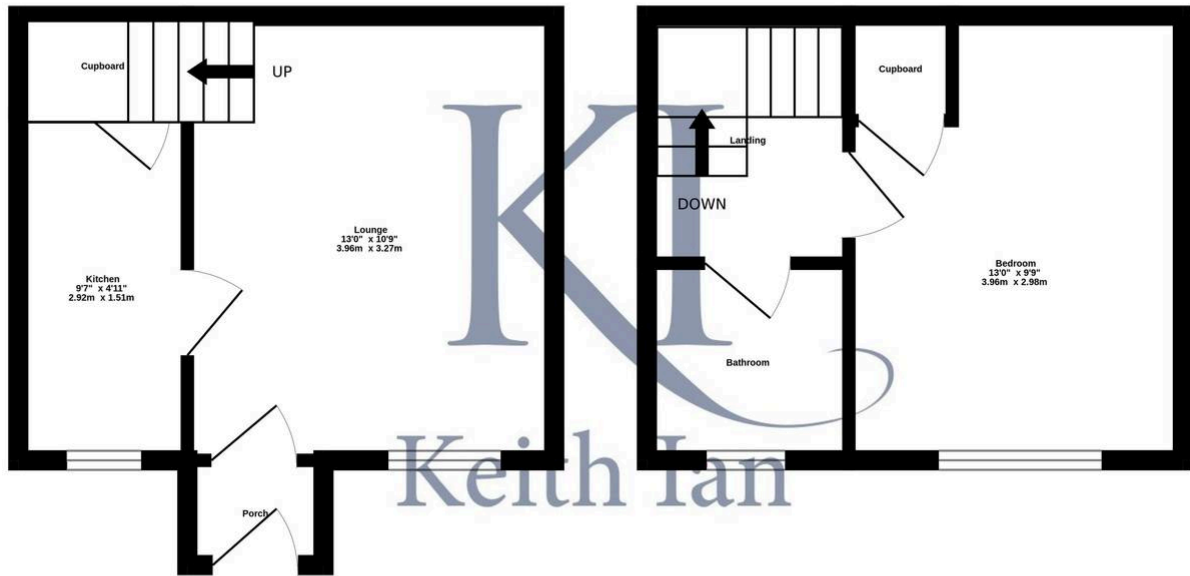
Bathroom

Front/Side Garden



Ground Floor
216 sq.ft. (20.1 sq.m.) approx.

1st Floor
204 sq.ft. (18.9 sq.m.) approx.



TOTAL FLOOR AREA : 420 sq.ft. (39.0 sq.m.) approx.

Whilst every attempt has been made to ensure the accuracy of the floorplan contained here, measurements of doors, windows, rooms and any other items are approximate and no responsibility is taken for any error, omission or mis-statement. This plan is for illustrative purposes only and should be used as such by any prospective purchaser. The services, systems and appliances shown have not been tested and no guarantee as to their operability or efficiency can be given.
Made with Metropix ©2025

You can include any text here. The text can be modified upon generating your brochure.

You can include any text here. The text can be modified upon generating your brochure.