



1 East Court Steps, Saltmarshe Castle Park - HR7 4WF

Guide Price £120,000



hollywell  
homes





# 1 East Court Steps

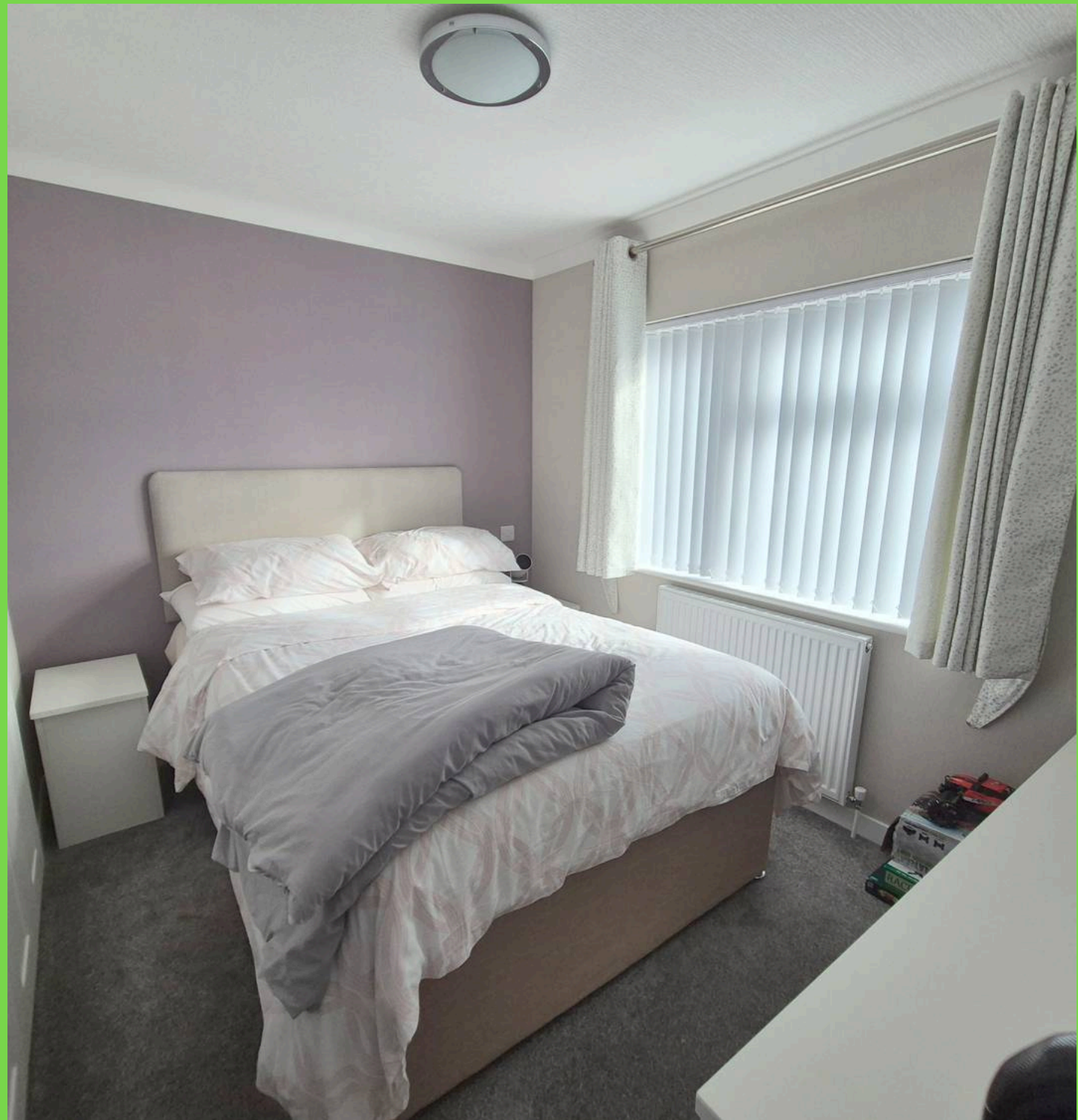
Saltmarshe Castle Park, Bromyard

Hollywell Homes bring to market this two bedroom detached park home set within the picturesque and popular Saltmarsh Castle Residential Park.

Council Tax band: TBD

Tenure: Leasehold

- 2 Bedroom Detached Park Home
- Spacious Living Throughout
- Private Driveway
- On Site Facilities
- Sold via auction under conditional terms
- Sold via Secure Sale







hollywell  
homes





# Ground Floor



FOR IDENTIFICATION PURPOSES ONLY - NOT TO SCALE  
Plan produced using PlanUp.



**Entrance Hall**

**Lounge**

15' 11" x 10' 10" (4.85m x 3.30m)

**Dining Area**

7' 5" x 7' 7" (2.27m x 2.31m)

**Kitchen**

9' 3" x 8' 4" (2.83m x 2.53m)

**Utility Area**

**Family Bathroom**

**Bedroom 1**

10' 10" x 9' 4" (3.30m x 2.84m)

**Walk in Wardrobe**

**En-Suite**

**Bedroom 2**

10' 8" x 9' 7" (3.26m x 2.93m)







## Hollywell Homes

14 St Johns, Worcester - WR2 5AH

01905 948848

[info@hollywellhomes.co.uk](mailto:info@hollywellhomes.co.uk)

<http://www.hollywellhomes.co.uk/>



hollywell  
homes

