



10 Gamston Crescent, Nottingham – NG5 3DN

Guide Price £220,000 – £230,000

DavidJames
the estate agent



10 Gamston Crescent

Nottingham, Nottingham

GUIDE PRICE £220,000–£230,000 Well-presented semi-detached family home close to Sherwood's amenities! Lounge, kitchen, 3 double beds and a bathroom plus a generous garden and multi-vehicle driveway!

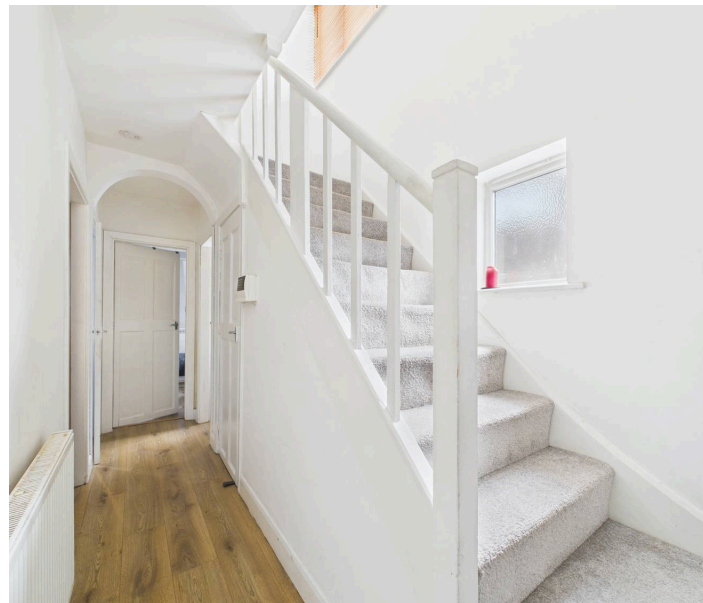
Council Tax band: A

Tenure: Freehold

EPC Energy Efficiency Rating: E

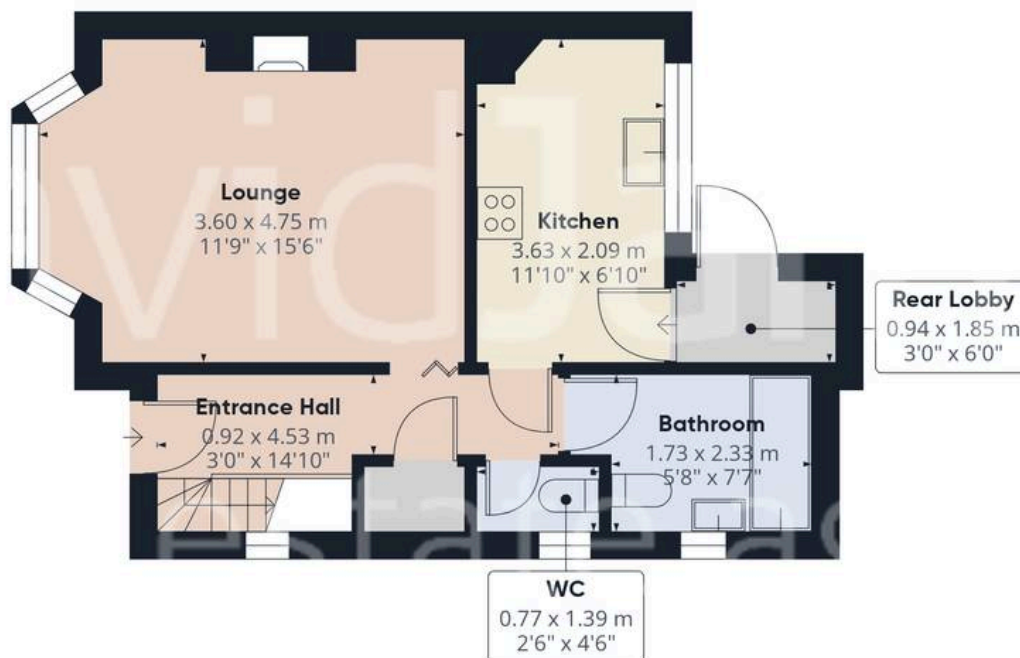
EPC Environmental Impact Rating: F

- Semi-detached family home
- Within easy reach of Sherwood's vibrant amenities, popular schools and frequent bus services
- Initial entrance hall with a convenient WC
- Bright and spacious lounge with a feature fireplace
- Fitted kitchen with integrated cooking appliances
- Ground floor bathroom with a three-piece suite
- Three first floor double bedrooms
- Generous lawned rear garden with a feature paved patio area
- Driveway providing off-street parking for multiple vehicles
- Viewing highly recommended!









Floor 0



Floor 1

Approximate total area⁽¹⁾

69.1 m²
744 ft²

Reduced headroom

0.4 m²
4 ft²

(1) Excluding balconies and terraces

Reduced headroom

..... Below 1.5 m/5 ft.

While every attempt has been made to ensure accuracy, all measurements are approximate, not to scale. This floor plan is for illustrative purposes only.

Calculations were based on RICS IPMS 3C standard. Please note that calculations were adjusted by a third party and therefore may not comply with RICS IPMS 3C.

GIRAFFE360



David James Estate Agents

98-100 Front Street, Arnold - NG5 7EJ

0115 955 5550 • arnold@david-james.com • www.david-james.com

These particulars are produced in good faith and are set out as a general guide only. Measurements are approximate and floor plans are for illustrative purposes only. Services have not been tested. We have established professional relationships with third-party suppliers for the provision of services to Clients, details of which can be found on the property listing page on our website.