



Old Town, Moreton-in-Marsh



A beautifully presented two double bedroom cottage situated in Old Town, Moreton-in-Marsh.

This charming two bedroom cottage, available with no onward chain comprises of a conservatory and a traditional, shaker style kitchen with cream coloured cabinets and wood effect worktops - benefiting from an integrated fridge/freezer, washer/dryer and dishwasher - as well as a cosy living room featuring a stone wall and fireplace with a log burner style electric fire. Upstairs, both double bedrooms feature stunning wooden beams across the ceiling, with fitted wardrobes and an en-suite off the main bedroom, and main bathroom. On the landing, further fitted storage is available.

Outside, there is a flourishing courtyard garden with a shed and multiple storage cupboards, providing useful space to store everything needed for a summer barbecue.

There is a right of access across the garden which can be used by a neighbouring property for up to 12 time a year, with notice given in advance. The previous tenant has informed us there was never an issue, and it was only used a couple of times in over 2.5 year period.

EPC: E

Council Tax Band: D

Tenure: Freehold

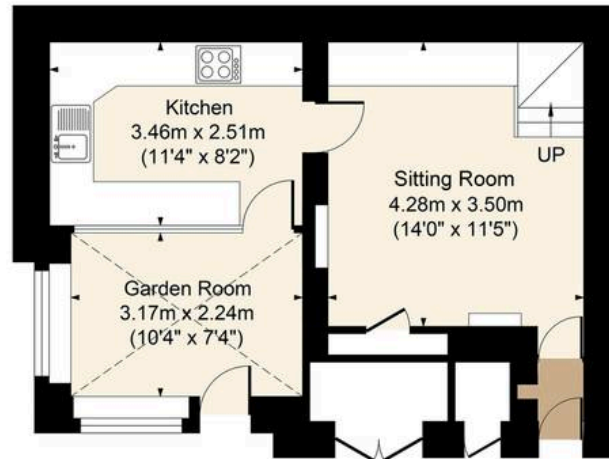
What3Words: [reported.pickles.duos](https://www.what3words.com/reported/pickles.duos)

Moreton-in-Marsh has been a prosperous market town for many years - and the commercial tradition continues today, with weekly Tuesday markets and a thriving high street that provides residents with a wide range of amenities. The town enjoys excellent public transport links including a direct rail link to London Paddington (via Oxford), and amenities include two large supermarkets, two smaller food stores and a variety of tearooms, cafes, shops, and pubs.

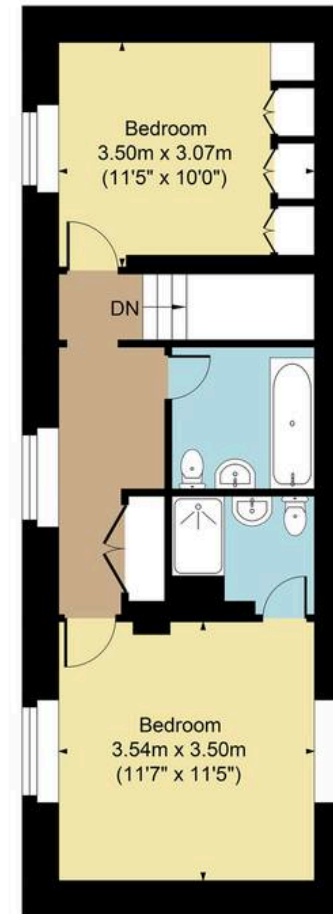




Main House Approx. Gross Internal Area:- 76.16 sq.m. 820 sq.ft.



Ground Floor



First Floor

FOR ILLUSTRATIVE PURPOSES ONLY-NOT TO SCALE
The position & size of doors, windows, appliances and other features are approximate only.
□□□ Denotes restricted head height
www.dmlphotography.co.uk