



4 Woodville Estate St. Saviours Road, St. Helier
£595,000

BROADLANDS
FINDING YOU A HOME SINCE 1972

4 Woodville Estate St. Saviours Road

St. Helier, Jersey

- 4 bedroom townhouse built over 3 floors
- Option of a self contained 1 bedroom annex
- 2 bathrooms
- Spacious home 1652 sq ft
- Garage and 2 designated parking spaces
- Sole agent
- Call Doug on 07700702585 or doug@broadlandsjersey.com



4 Woodville Estate St. Saviours Road

St. Helier, Jersey

This charming four bedroom terraced town-house benefits from being on the outskirts of St. Helier centre within easy walking distance from town. The property comprises of a self contained ground floor flat with access to the patio garden and has a kitchen, bedroom (number 4) and a separate lounge area. There is also a convenient shower room/toilet. The ground floor also comprises of an integral garage with electric garage door making parking easier. In addition to this integral garage the house also has parking for two additional cars in front. The first floor comprises of a open plan kitchen/dining area that opens to a separate spacious lounge area ideal for entertaining.

The second floor houses the main bathroom and two spacious bedrooms with ample storage and a smaller third bedroom or study.

The potential for this property is endless as a three bedroom with income circa (£1000 pcm) or as a family home with potential to expand the ground floor to gain an additional bedroom.





Living

Generous living area. Kitchen/diner.

Sleeping

Three bedrooms, 2 doubles and a single. House bathroom.

Annex

Lounge, kitchen, bedroom, shower room.

Services

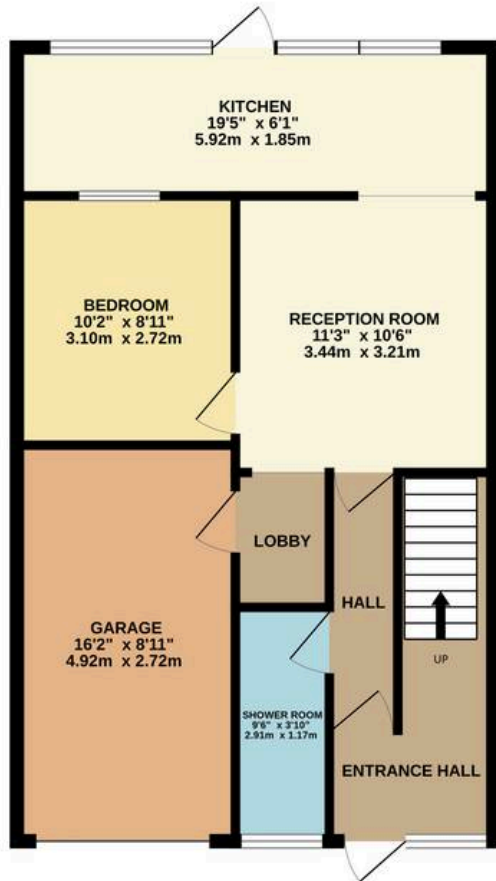
All main services. Double glazing and electric heating.

Recently had a new roof.

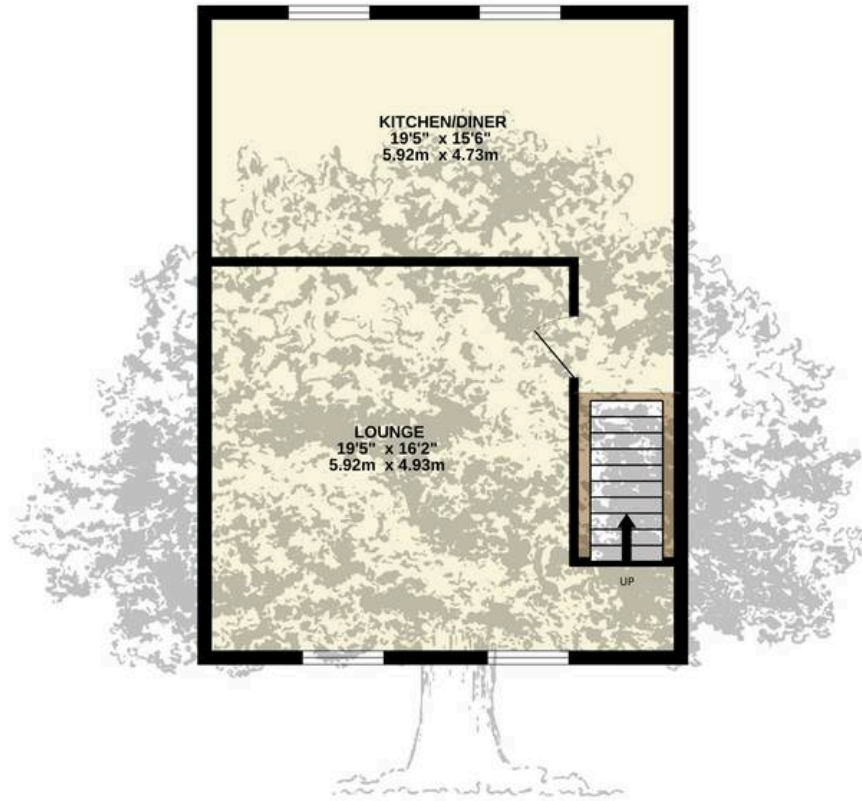




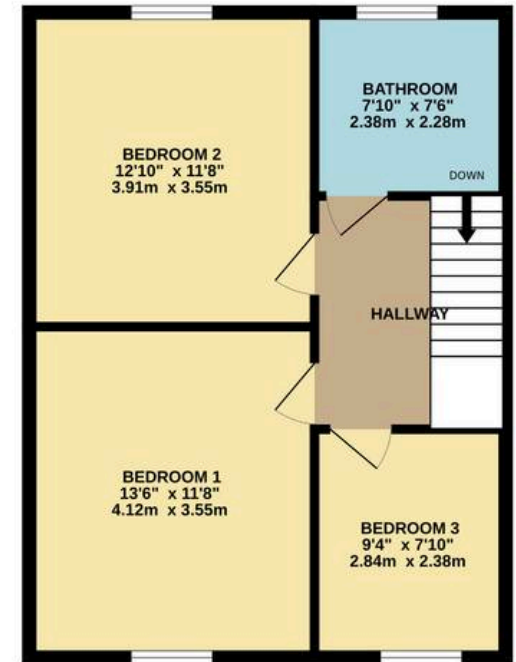
GROUND FLOOR
629 sq.ft. (58.5 sq.m.) approx.



1ST FLOOR
511 sq.ft. (47.5 sq.m.) approx.



2ND FLOOR
511 sq.ft. (47.5 sq.m.) approx.



TOTAL FLOOR AREA : 1652 sq.ft. (153.5 sq.m.) approx.

Whilst every attempt has been made to ensure the accuracy of the floorplan contained here, measurements of doors, windows, rooms and any other items are approximate and no responsibility is taken for any error, omission or mis-statement. This plan is for illustrative purposes only and should be used as such by any prospective purchaser. The services, systems and appliances shown have not been tested and no guarantee as to their operability or efficiency can be given.

Made with Metropix ©2025



Broadlands

Broadlands Estates, Library Place - JE2 3NL

01534 880770 • enquiries@broadlandsjersey.com • www.broadlandsjersey.com/

BROADLANDS

FINDING YOU A HOME SINCE 1972