



Bentroyd Bent Estate, Bacup

£700,000 Freehold

Character 4 Bed Detached • Idyllic location with countryside views • Fantastic period property with many original features • Four reception rooms, utility room and ground floor WC • Four double bedrooms with ensuite to master bedroom • Large gardens to front side and rear • Separate office space with storage and parking • Private woodland area

Luxury family home in Weir, Bacup outskirts, surrounded by countryside. 4 beds, 4 rec rooms, ensuite master, new heating system. Over 1 acre garden, 5-acre plot with paddock. Ideal rural retreat with modern comforts. 2 garages and off road parking for multiple cars. Council Tax band: F

Tenure: Freehold

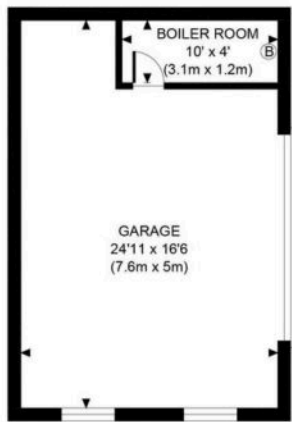
EPC Energy Efficiency Rating: D

EPC Environmental Impact Rating: E

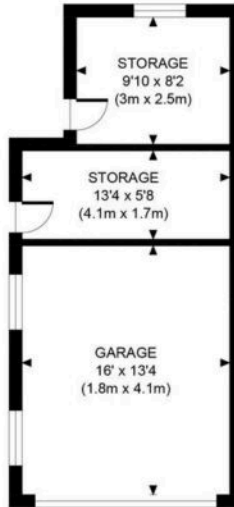


- Character 4 Bed Detached
- Idyllic location with countryside views
- Fantastic period property with many original features
- Four reception rooms, utility room and ground floor WC
- Four double bedrooms with ensuite to master bedroom
- Large gardens to front side and rear
- Separate office space with storage and parking
- Private woodland area

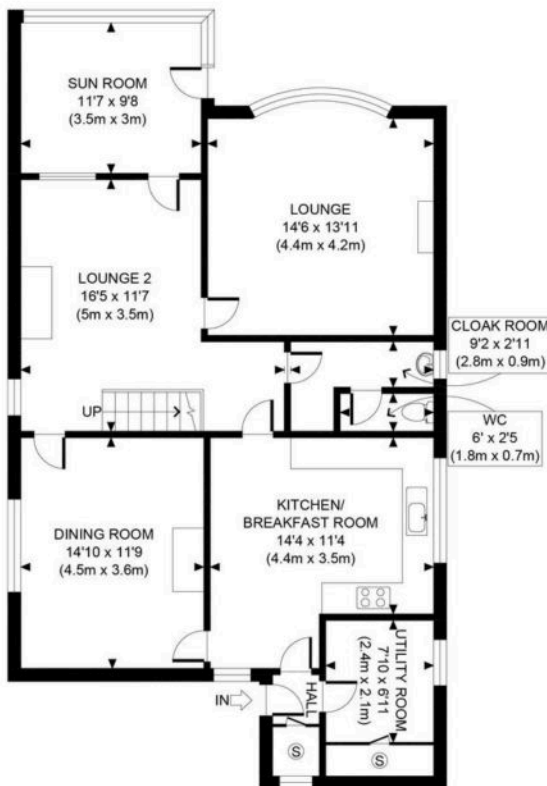




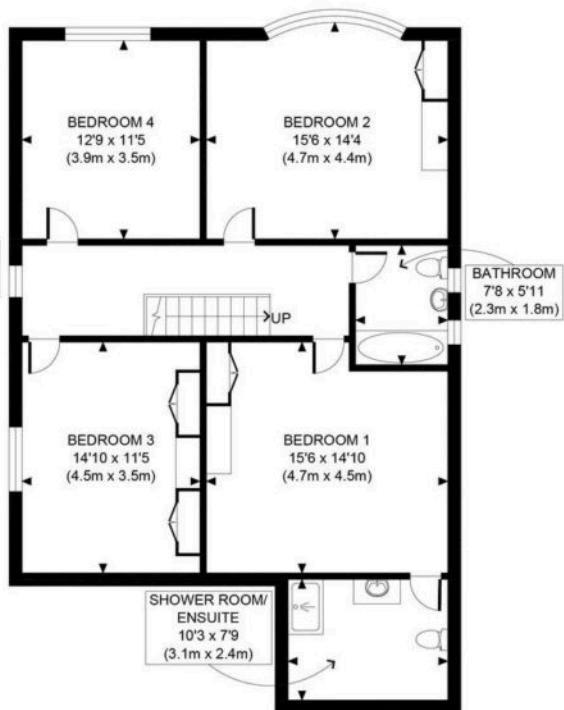
GROUND FLOOR
GROSS INTERNAL
FLOOR AREA WITH GARAGE 411 SQ FT
FLOOR AREA WITHOUT GARAGE 40 SQ FT



GROUND FLOOR
GROSS INTERNAL
FLOOR AREA WITH GARAGE 379 SQ FT
FLOOR AREA WITHOUT GARAGE 160 SQ FT



GROUND FLOOR
GROSS INTERNAL
FLOOR AREA 1086 SQ FT



FIRST FLOOR
GROSS INTERNAL
FLOOR AREA 1026 SQ FT

APPROX. GROSS INTERNAL FLOOR AREA WITH GARAGE 2902 SQ FT / 270 SQM
APPROX. GROSS INTERNAL FLOOR AREA WITHOUT GARAGE 2312 SQ FT / 215 SQM

Disclaimer: Floor plan measurements are approximate and are for illustrative purposes only.
While we do not doubt the floor plan accuracy and completeness, you or your advisors should
conduct a careful, independent investigation of the property in respect of monetary valuation

Bentroyd

date 06/03/25

photoplan

You can include any text here. The text can be modified upon generating your brochure.

