



3 London Road Terrace London Road, Moreton-In-Marsh



This Victorian red brick house offers the perfect blend of character and modern convenience. The property boasts three spacious double bedrooms, ideal for families or anyone in need of extra space. A highlight of the living room is its feature fireplace with a cosy log burner, creating a warm and inviting atmosphere. The large south facing garden is a true gem and predominantly laid to lawn. Additionally, the property benefits from a recently renovated bathroom, new windows, and a modern boiler, ensuring comfort and efficiency. The interiors are flooded with natural light, creating a bright and airy ambience that is both inviting and uplifting.

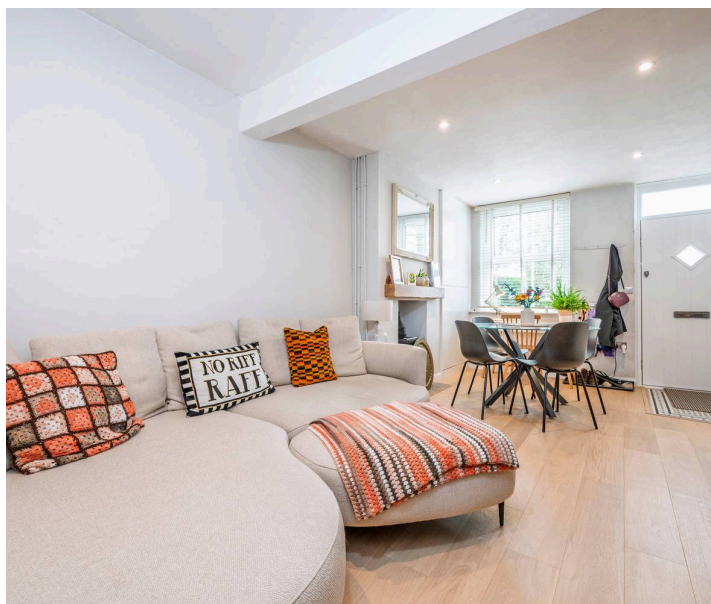
Moreover, the property is conveniently located within walking distance to the town centre, offering easy access to a variety of amenities, shops, and restaurants. Additionally, it is close to local train links to London, making it an ideal choice for commuters or those who enjoy exploring the city. Don't miss the chance to make this delightful property with its captivating outdoor space your new home.

EPC Rating: TBC

Council Tax Band: C

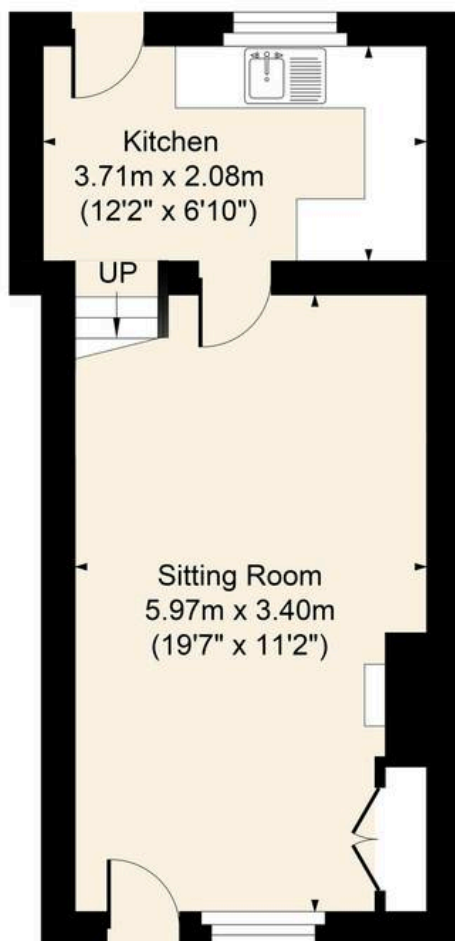
Tenure: Freehold

What3Words: [agreeable.gladiator.festivity](https://www.what3words.com/agreeable.gladiator.festivity)

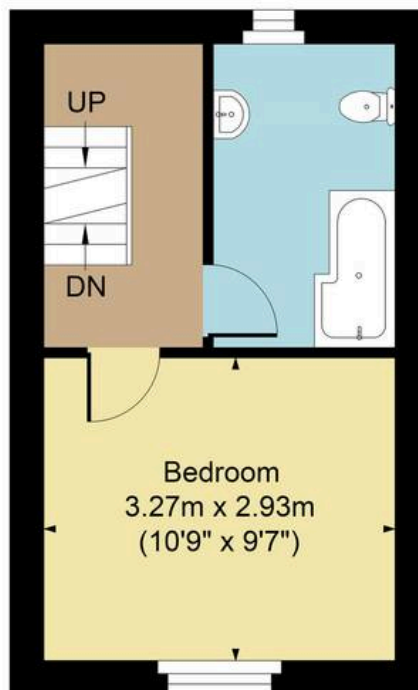


Moreton in Marsh has been a prosperous market town for many years - and the commercial tradition continues today, with weekly Tuesday markets and a thriving high street that provides residents with a wide range of amenities. The town enjoys excellent public transport links including a direct rail link to London Paddington (via Oxford), and amenities include two large supermarkets, two smaller food stores and a variety of tearooms, cafes, shops, and pubs.

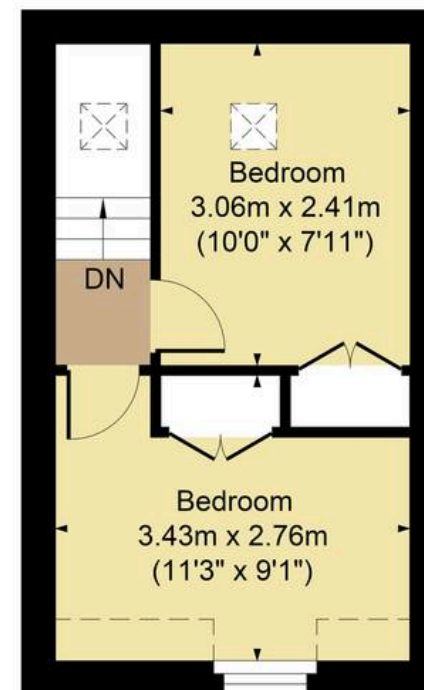




Ground Floor



First Floor



Second Floor

FOR ILLUSTRATIVE PURPOSES ONLY-NOT TO SCALE

The position & size of doors, windows, appliances and other features are approximate only.

□ □ Denotes restricted head height

www.dmlphotography.co.uk