



## 18 Yew Tree Gardens, HARROGATE

Harrogate

Guide Price £795,000



# MYRINGS





## 18 Yew Tree Gardens

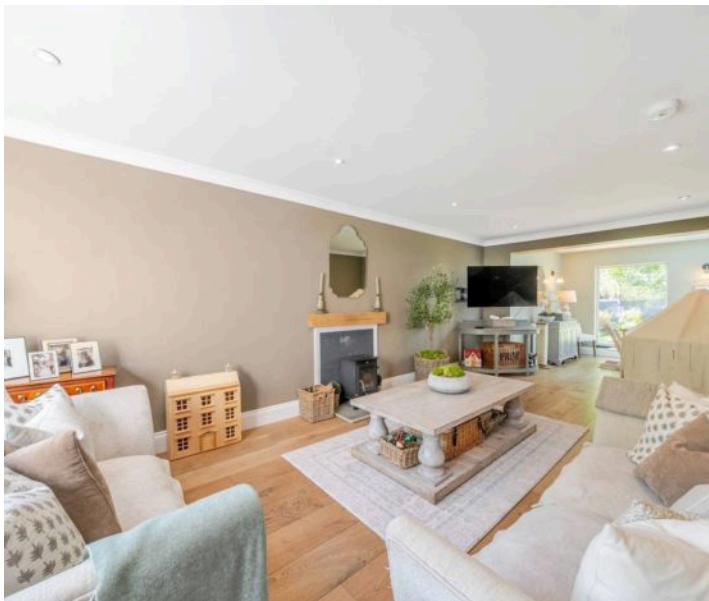
HARROGATE, Harrogate

A stunning 5 bedroom detached house which has undergone an impressive transformation to reveal breath taking interiors with the fabulous living kitchen with large central island, feature glass atrium roof and bi fold doors being on of the stand out features together with the new second floor principal suit addition comprising spacious main bedroom, dressing room and a luxurious shower room. Standing in landscaped gardens with an outside office a feature side pergola and entertaining area ideal overlooking open fields and situated in a quiet sought after cul de sac close to Ashville College & Rossett High School.

Council Tax band: G

Tenure: Freehold

- BEAUTIFUL INTERIORS
- IMPRESSIVE SECOND FLOOR PRINCIPAL BEDROOM SUIT
- HAND BUILT LIVING KITCHEN WITH ISLAND, CEILING GLASS ATRIUM & BI FOLD DOORS
- OUTSIDE GARDEN OFFICE
- LOVELY PRIVATE GARDENS & SIDE PERGOLA
- QUIET CUL DE SAC LOCATION



MYRINGS





# Yew Tree Gardens, Harrogate, HG2



Denotes restricted  
head height

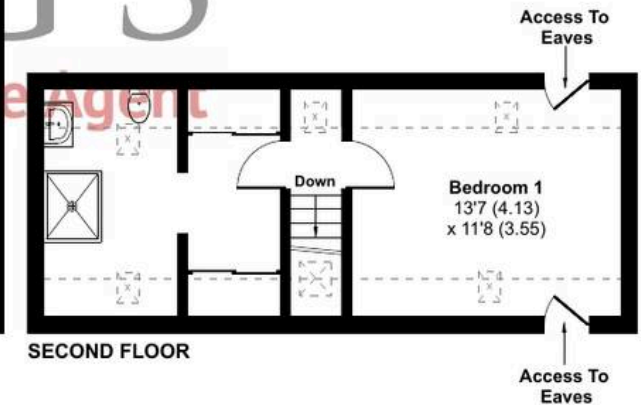
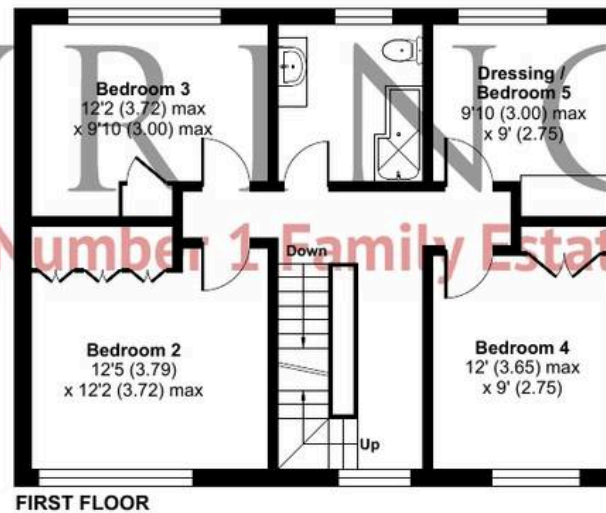
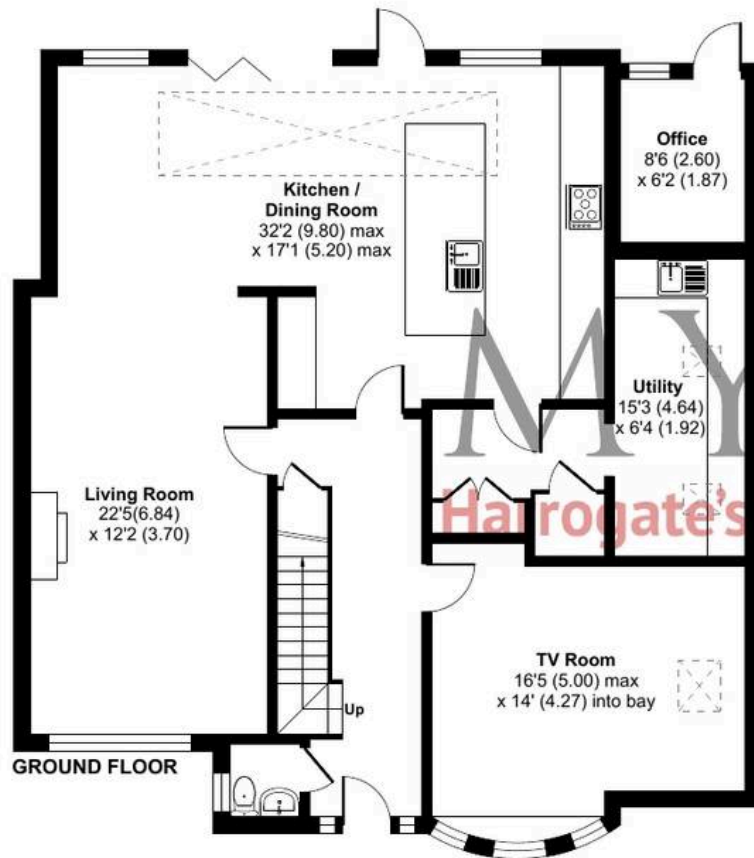
Approximate Area = 2176 sq ft / 202.1 sq m

Limited Use Area(s) = 116 sq ft / 10.7 sq m

Outbuilding = 54 sq ft / 5 sq m

Total = 2346 sq ft / 217.8 sq m

For identification only - Not to scale











## Myrings Estate Agents

Myrings Estate Agents Ltd, 10 Princes Square - HG1 1LX

01423

566400

▪ [enquiries@myringsestateagents.com](mailto:enquiries@myringsestateagents.com) ▪ <http://myringsestateagents.com/>

