



11 Crawford Avenue, Prestwick, KA9 2BN

Offers in excess of **£220,000**

DONALD
ROSS
RESIDENTIAL



11 Crawford Avenue

Prestwick, KA9 2BN

A modern 3-bed semi-detached bungalow in sought-after Prestwick. Features spacious bay-window lounge, conservatory, stylish kitchen/bathroom, large private rear garden, driveway, and garage.

- Recently Modernised to a High Standard Throughout
- Bright and Spacious Lounge Featuring a Charming Bay Window
- Two Comfortable Ground Floor Bedrooms Plus a Versatile First-Floor Bedroom
- Stylish, Modern Family Bathroom
- Contemporary Fitted Kitchen with Sleek Finishes
- Generous Conservatory/Dining Area, Perfect for Entertaining
- Expansive Rear Garden Offering Privacy and Outdoor Enjoyment
- Extensive Driveway Leading to a Detached Garage
- Excellent Access to Local Shops, Schools, and Transport Links
- Located in a Highly Desirable and Peaceful Residential Neighbourhood



































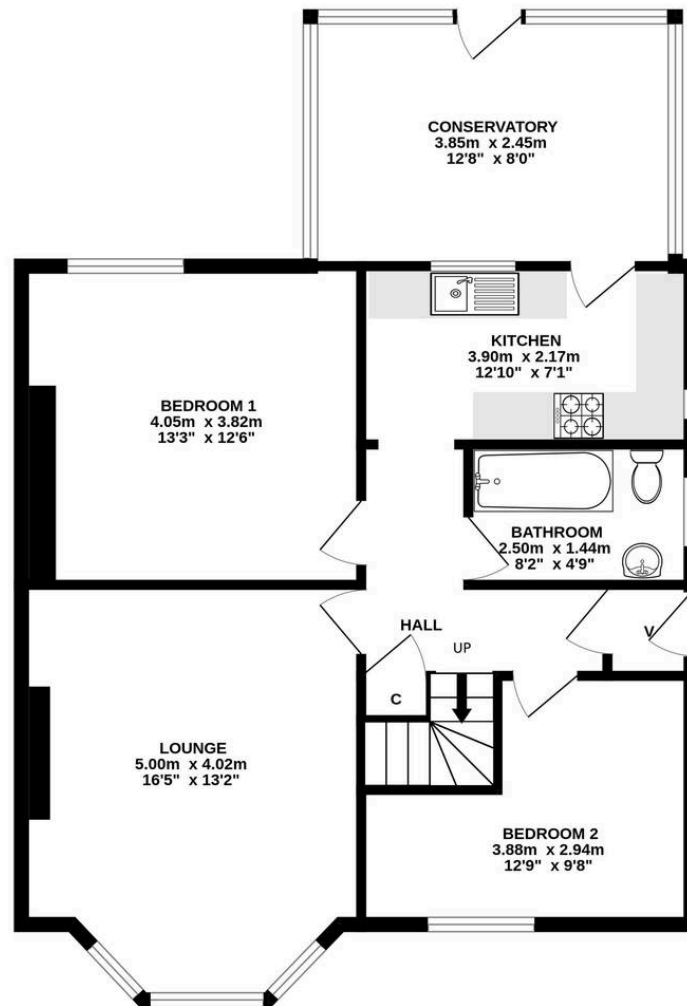




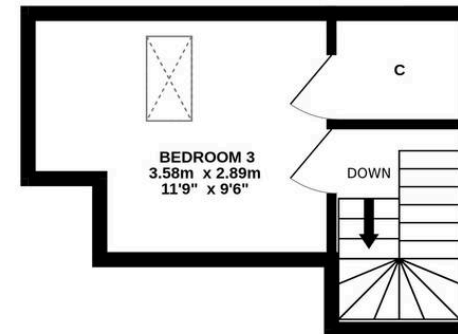




GROUND FLOOR



1ST FLOOR



ALL SIZES TAKEN AT WIDEST POINTS

Whilst every attempt has been made to ensure the accuracy of the floorplan contained here, measurements of doors, windows, rooms and any other items are approximate and no responsibility is taken for any error, omission or mis-statement. This plan is for illustrative purposes only and should be used as such by any prospective purchaser. The services, systems and appliances shown have not been tested and no guarantee as to their operability or efficiency can be given.
Made with Metropix ©2025



Donald Ross Residential Ayr

Donald Ross, 1 Beresford Terrace – KA7 2ER

01292 288222 • office@donaldross.co.uk • www.donaldross.co.uk

While every effort has been made to ensure accuracy, buyers should independently verify all details and review the Home Report before submitting an offer. No warranty or representation is given regarding the property, and neither the agent nor the seller accepts responsibility for any inaccuracies. Buyers must satisfy themselves on all legal aspects.