



Treadgold Street,
London, W11.



Offers Over £950,000



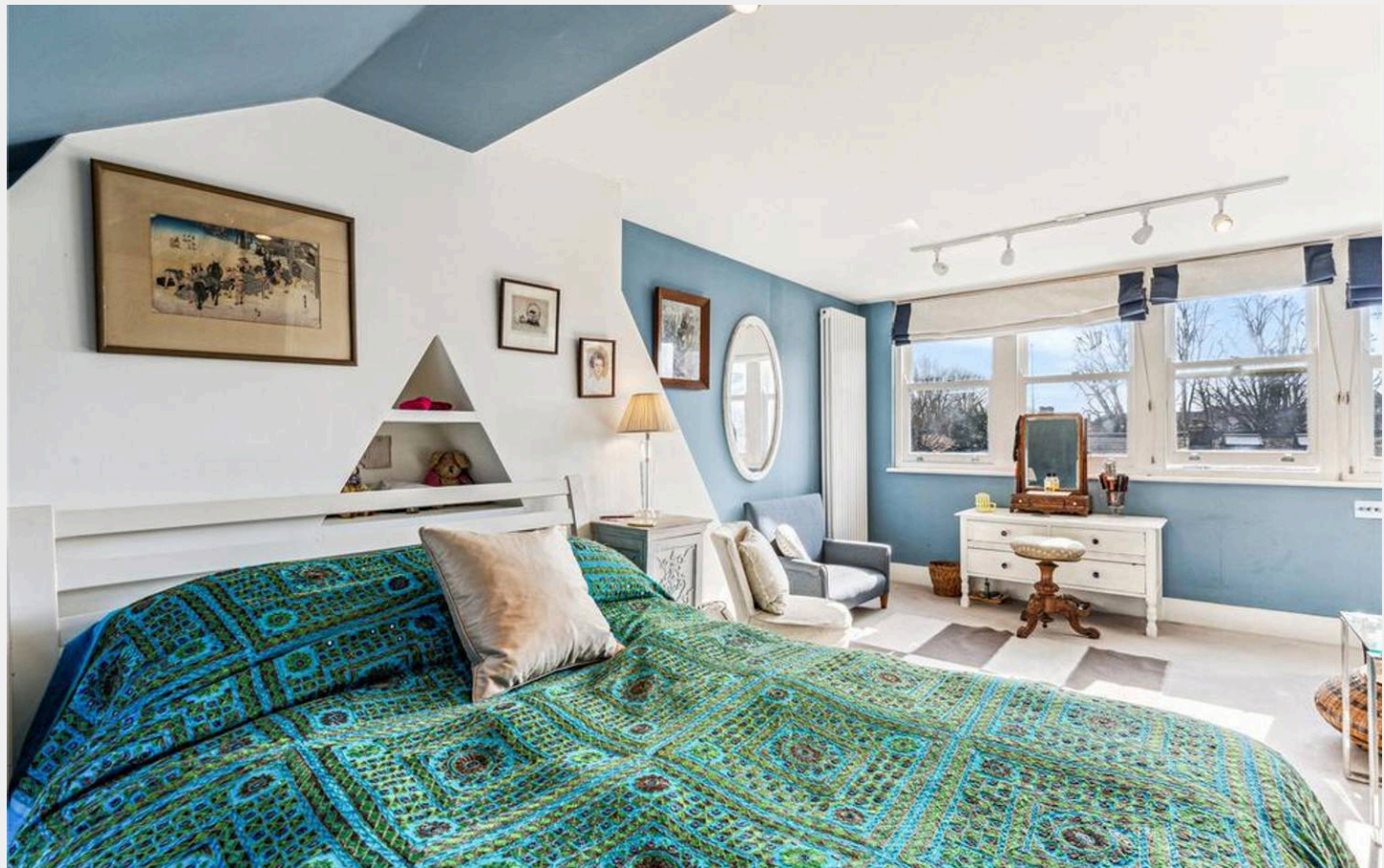
Treadgold Street, London

An exquisite split-level home, meticulously maintained and in pristine condition throughout in this quiet corner of Notting Hill, W11.

Upon entering on the first floor, you are greeted by a naturally light-filled reception room that effortlessly extends onto a south-facing balcony, perfect for soaking in the sunshine. A separate, modern, and fully self-contained kitchen provides functionality and style, complemented by a well-appointed family bathroom. To the front of the property, a large reception room boasts impressive views down the street and offers the versatility to be used as a second bedroom or home office.

On the second floor, you discover a generously proportioned bedroom with an abundance of built-in storage, bathed in natural light, and accompanied by a sophisticated ensuite bathroom for added comfort and privacy.

- Close to the Tube
- Westfield London close by
- Beautifully maintained
- Balcony





Ideally situated just to the west of Clarendon Cross within the sought-after Holland Park Avondale Conservation Area.

Treadgold Street benefits from being moments away from a wealth of local amenities, including the vibrant shops, cafes, and restaurants of Westfield London as well as Holland Park Avenue to the south and Ladbroke Grove and the iconic Portobello Market to the east. The Kensington Leisure Centre is also just a stone's throw away.

For those seeking excellent transport links, both Latimer Road, Ladbroke Grove, and Holland Park Underground Stations are within easy reach, providing swift access to the city.

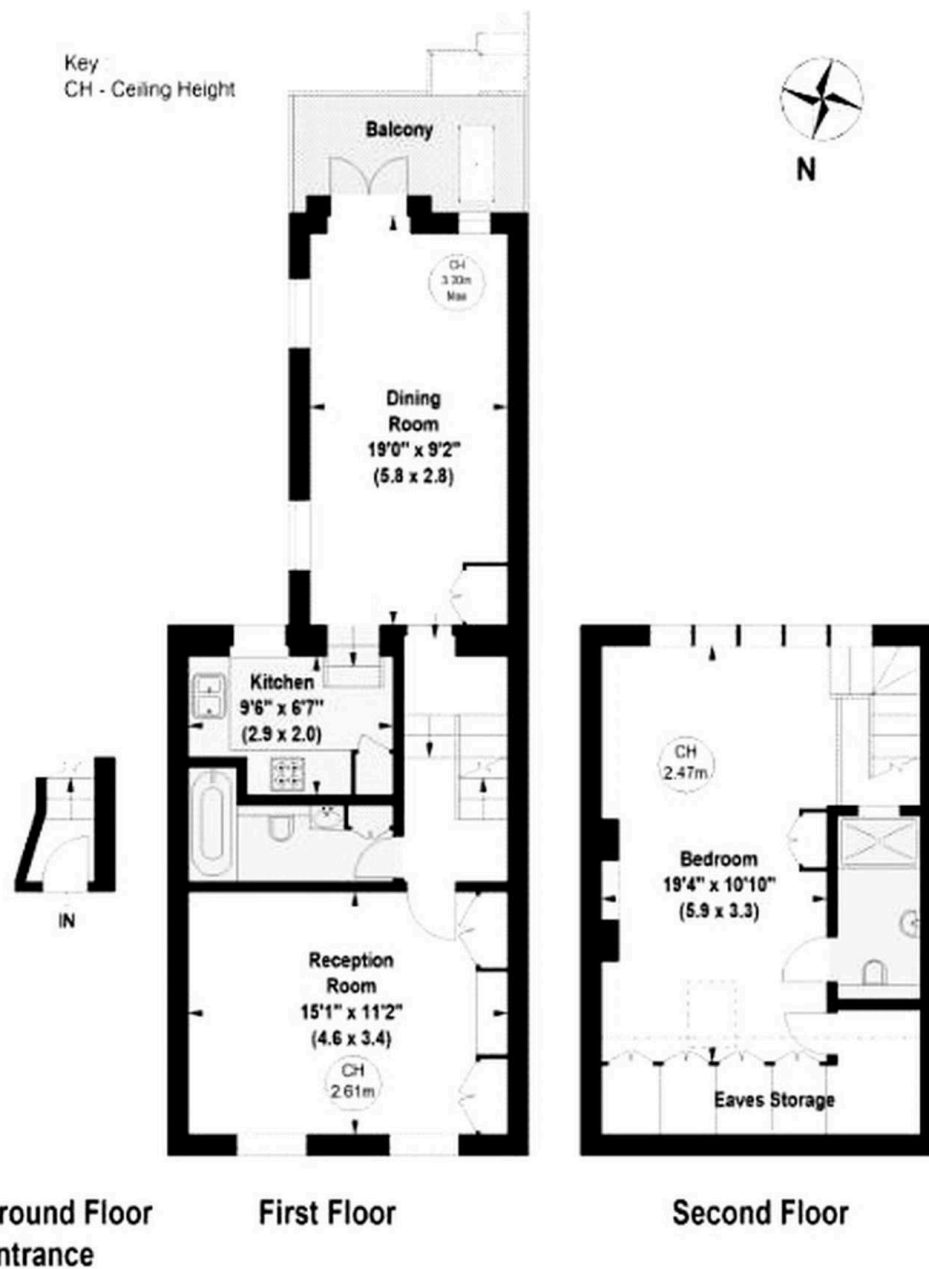
Council Tax band: TBD

Tenure: Leasehold

EPC Energy Efficiency Rating: C

EPC Environmental Impact Rating: D

Treadgold Street, W11
Approximate Gross Internal Area 894 sq ft (83.1 sq m)
(Including Eaves Storage)
Eaves Storage 60 sq ft (5.6 sq m)





Rigby & Marchant

115 Westbourne Studios 242 Acklam Road, London - W10 5JJ

020 7221 7210

sales@rigbyandmarchant.co.uk

www.rigbyandmarchant.co.uk/

