



## Rigton Moor Farm Wike Lane, Bardsey

Leeds

Guide Price £1,750,000



# MYRINGS





## Rigton Moor Farm Wike Lane

Bardsey, Leeds

Viewing Day - Wednesday 18th June. Call the office to arrange a suitable time to view! Rigton Moor Farm offers a rare and wonderful opportunity to acquire a working farm briefly consisting of a 3 bedroom detached farm house built in about 1920 with circa 1817 square feet of accommodation over two floors with huge potential to develop further standing in stocked formal gardens. The farm is approached a gated entrance and side driveway that leads to a large courtyard with hard standing. Extensive range of steel and block built agricultural buildings at about 20,000 square feet constructed in 2014, brick built double garaging with roller shutter doors. Rigton Moor Farm enjoys about 54.94 acres (22.23 hectares) of pasture land with part hedged, timber post and wire boundaries all situated in the sought after village of Bardsey enjoying breath taking Westerly facing views across open countryside.

Council Tax band: F

Tenure: Freehold

- 1817 SQUARE FOOT FARM HOUSE
- 54.94 ACRES
- BREATH TAKING VIEWS
- 20,000 SQUARE FOOT AGRICULTURAL BUILDING
- BRICK BUILT GARAGING HOUSE



MYRINGS









# Wike Lane, Bardsey, Leeds, LS17

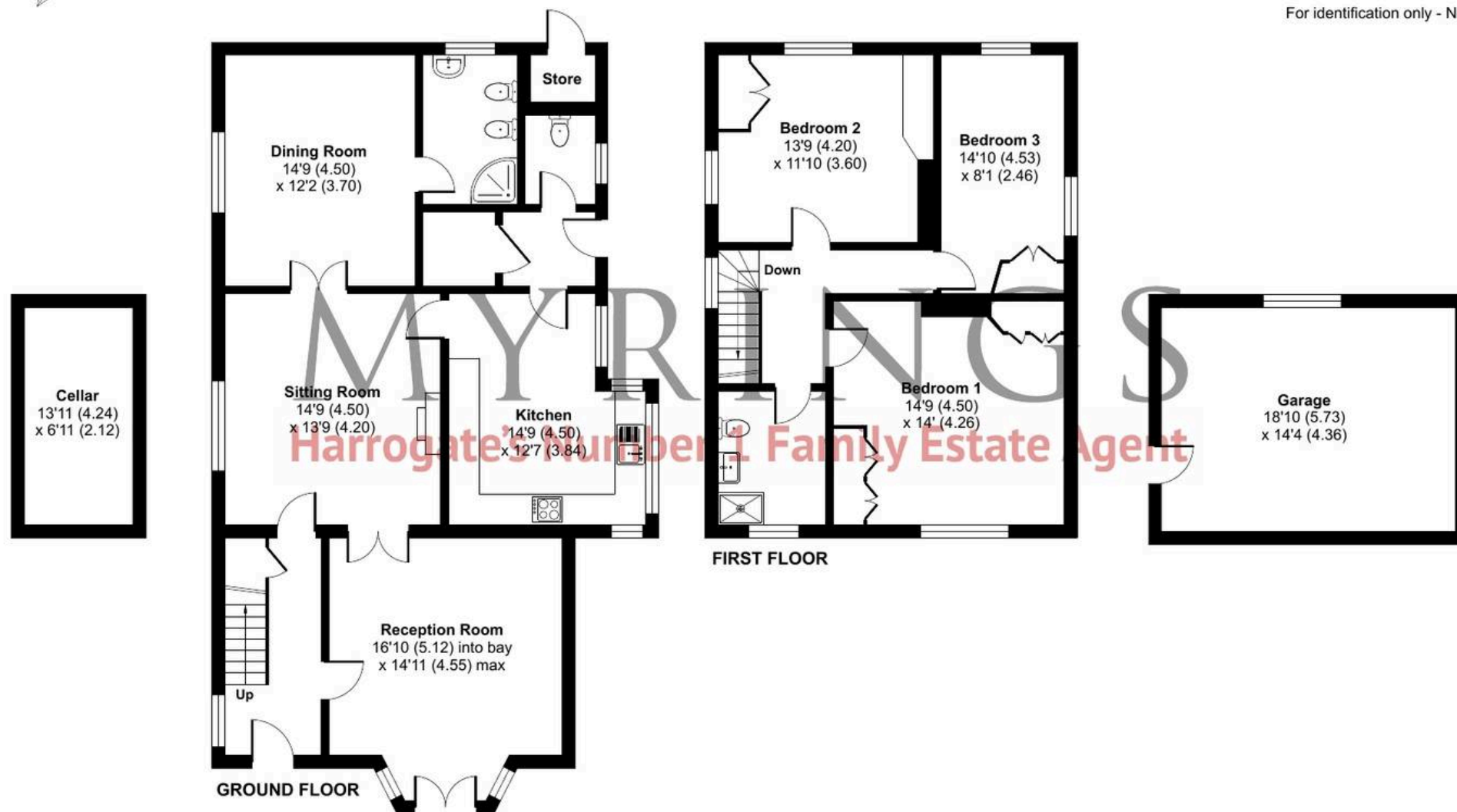
Approximate Area = 1817 sq ft / 168.8 sq m (excludes store)

Garages = 2080 sq ft / 193.2 sq m

Outbuildings = 19895 sq ft / 1848.3 sq m

Total = 23792 sq ft / 2210.3 sq m

For identification only - Not to scale









## Myrings Estate Agents

Myrings Estate Agents Ltd, 10 Princes Square - HG1 1LX

01423

566400

▪ [enquiries@myringsestateagents.com](mailto:enquiries@myringsestateagents.com) ▪ <http://myringsestateagents.com/>

