



10 Bath Street, Kilmarnock

Offers in excess of £85,000

DONALD
ROSS
RESIDENTIAL



10 Bath Street

Kilmarnock, Kilmarnock

Donald Ross Residential are delighted to present this charming one-bedroom mid-terraced home. Recently upgraded, it features a modern kitchen and bathroom, complemented by a private rear garden and residents' parking. Situated in a sought-after cul-de-sac, the property is just a short walk from Kilmarnock town centre, offering excellent access to local amenities, schools, and transport links.

Council Tax band: B

Tenure: Freehold

EPC Energy Efficiency Rating: D

EPC Environmental Impact Rating: D

- Spacious One Bedroom Villa
- Recently Upgraded Interiors
- Stylish Modern Kitchen
- Contemporary Bathroom
- Mezzanine Balcony
- Private Rear Garden
- Private Residents' Parking
- Proximity to Kilmarnock Town Centre
- Excellent Local Amenities
- Superb Transport Links





















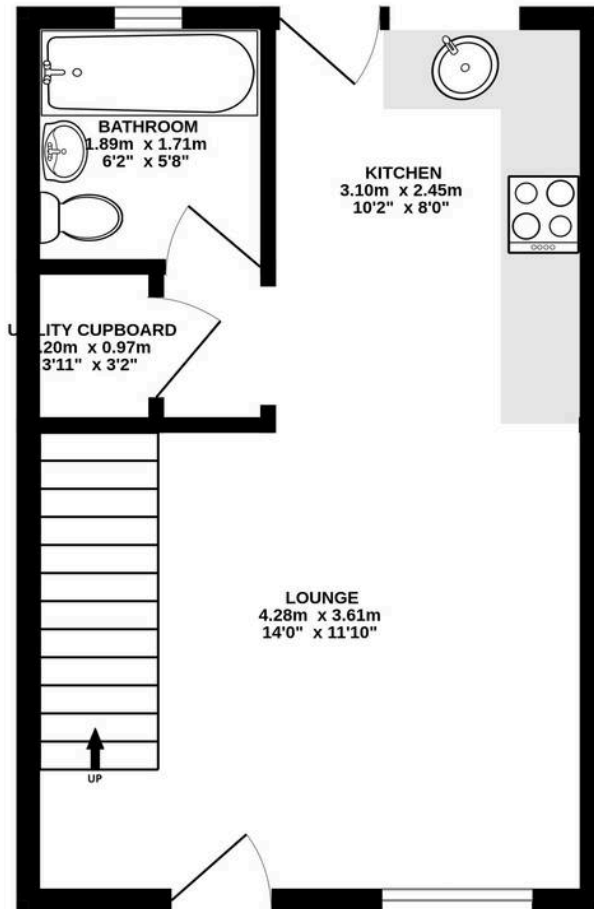




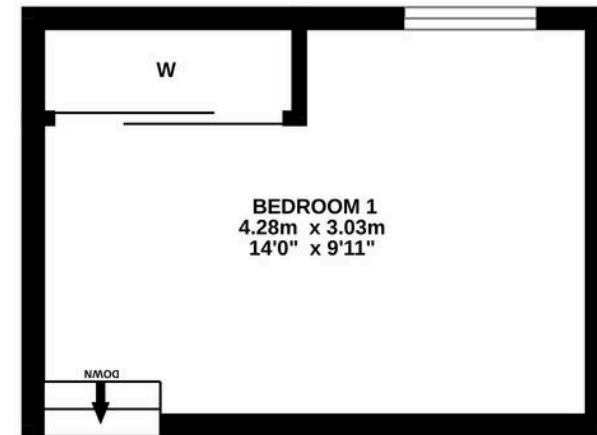




GROUND FLOOR



1ST FLOOR



ALL MEASUREMENTS TAKEN AT WIDEST POINT.

Whilst every attempt has been made to ensure the accuracy of the floorplan contained here, measurements of doors, windows, rooms and any other items are approximate and no responsibility is taken for any error, omission or mis-statement. This plan is for illustrative purposes only and should be used as such by any prospective purchaser. The services, systems and appliances shown have not been tested and no guarantee as to their operability or efficiency can be given.
Made with Metropix ©2025



Donald Ross Residential Kilmarnock

Donald Ross Residential, 104-106 John Finnie Street – KA1 1BB

01563 550088 • kilmarnock@donaldross.co.uk • www.donaldross.co.uk

While every effort has been made to ensure accuracy, buyers should independently verify all details and review the Home Report before submitting an offer. No warranty or representation is given regarding the property, and neither the agent nor the seller accepts responsibility for any inaccuracies. Buyers must satisfy themselves on all legal aspects.