



Chale Main Road, Nutbourne

Guide Price £465,000

 **Henry Adams**
estate agents



Chale Main Road

Nutbourne, Chichester

CHARMING TWO- BEDROOM semi-detached house with character & modern living. TWO RECEPTION ROOMS, fitted kitchen, UTILITY ROOM, potential to extend. Stylish bathroom, well-maintained garden, DRIVEWAY. Perfect for first-time buyers or investors seeking tailored living.

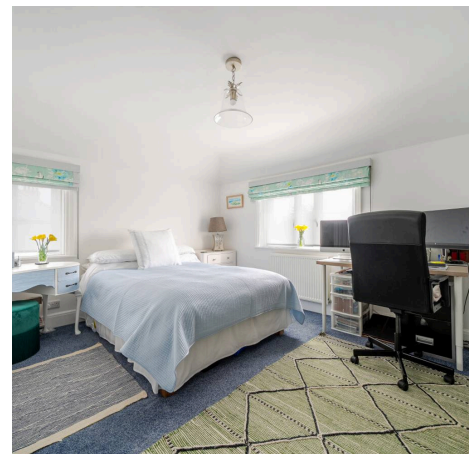
Council Tax band: D

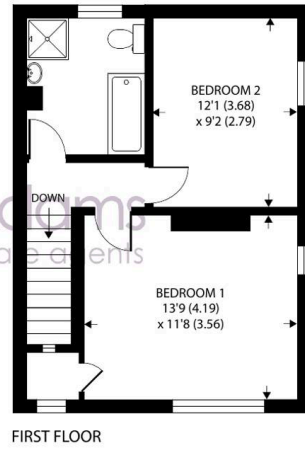
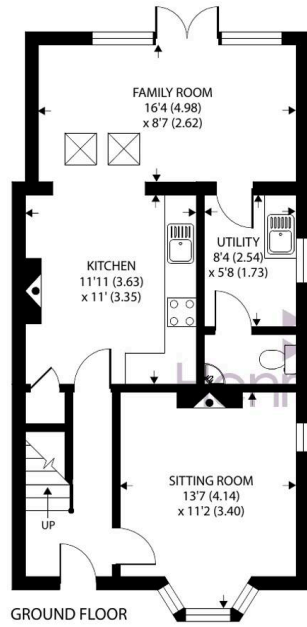
Tenure: Freehold

EPC Energy Efficiency Rating: D

EPC Environmental Impact Rating:

- Two Bedroom Semi- Detached House
- Potential to Extend Further if Required STP
- Two Reception Rooms
- Utility Room & Cloakroom
- Two Double Bedrooms
- Stylish Recently Fitted Family Bathroom
- Generous Size Garden With Seating Area
- Driveway Providing Ample Parking
- Perfect First time buy / Downsize Or Investment





Approximate Area = 1002 sq ft / 93 sq m
For identification only - Not to scale





You can include any text here. The text can be modified upon generating your brochure.

