



67 Serlby Rise, Nottingham – NG3 2LR

Guide Price £150,000



67 Serlby Rise

Nottingham, Nottingham

Semi-detached house with lots of potential, offered to the market with no upward chain and close to the City! Bright lounge, dining kitchen, 3 bedrooms, south-westerly garden and off-street parking.

Council Tax band: A

Tenure: Freehold

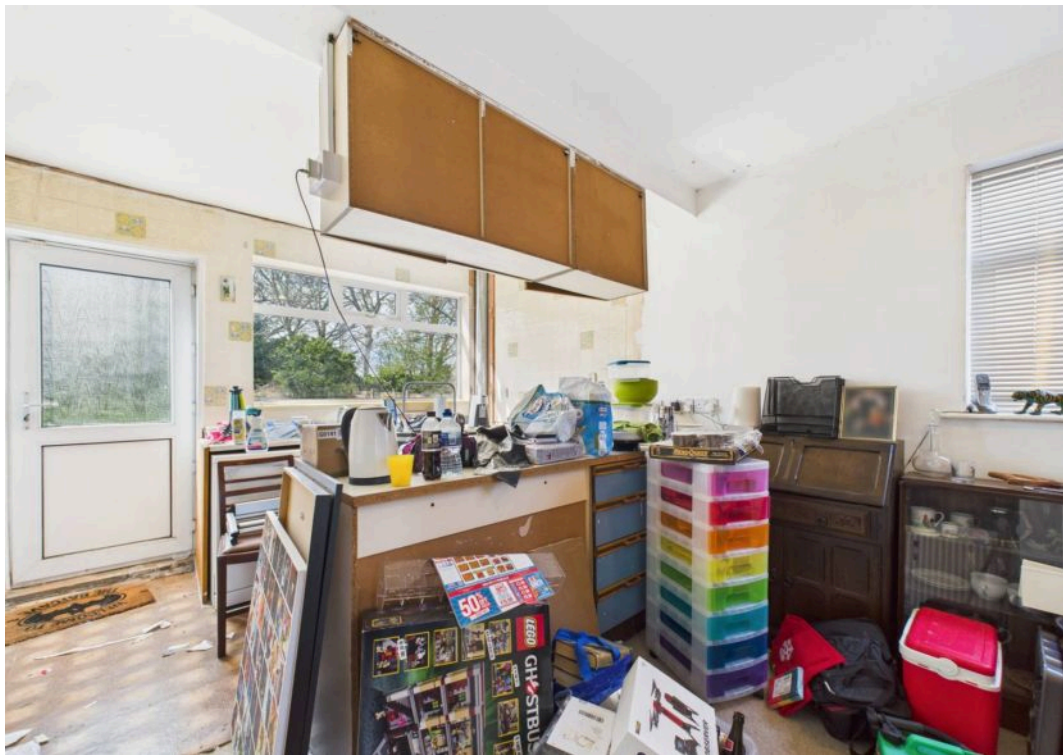
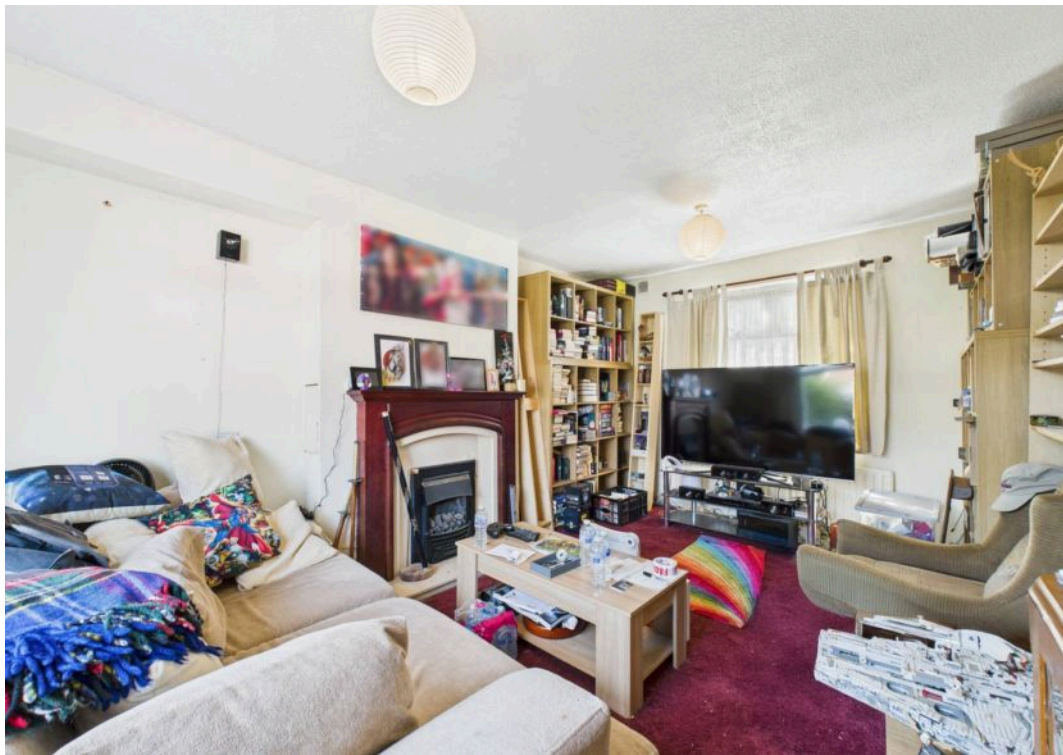
EPC Energy Efficiency Rating: D

EPC Environmental Impact Rating:

- Semi-detached house
- Offered to the market with no upward chain
- Lots of potential
- A short commute to the nearby Nottingham City Centre
- Bright lounge with dual-aspect windows
- Good-sized dining kitchen
- Three first floor bedrooms
- First floor bathroom with a three-piece suite
- Generous, south-westerly facing and enclosed rear garden and a recently replaced roof
- Driveway to the front provides off-street parking









Floor 0

Approximate total area⁽¹⁾
70.6 m²
759.93 ft²



Floor 1

(1) Excluding balconies and terraces

Reduced headroom

..... Below 1.5 m/5 ft

While every attempt has been made to ensure accuracy, all measurements are approximate, not to scale. This floor plan is for illustrative purposes only.

Calculations are based on RICS IPMS 3C standard.

GIRAFFE360



David James Estate Agents

376 Carlton Hill, Carlton - NG4 1JA

0115 987 8957 • carlton@david-james.com • www.david-james.com

These particulars are produced in good faith and are set out as a general guide only. Measurements are approximate and floor plans are for illustrative purposes only. Services have not been tested. We have established professional relationships with third-party suppliers for the provision of services to Clients, details of which can be found on the property listing page on our website.