



1 Laigh Mount, Ayr

In Excess of £205,000

DONALD
ROSS
RESIDENTIAL



1 Laigh Mount

Ayr, Ayr

Council Tax band: E

Tenure: Freehold

- Highly Sought-After Location
- Well Proportioned 3 bedroom detached villa
- Bright Lounge with dining area, and versatile living spaces suited for modern family life.
- Traditionally styled kitchen
- Family Bathroom on the upper floor
- Three generously sized bedrooms comfortable, light-filled bedrooms ideal for families, guests, or home office use.
- Driveway and Garage providing secure off-street parking and additional storage options.
- Generous and mature gardens , offering outdoor space for relaxing, entertaining, or gardening enthusiasts.
- Proximity to excellent schools , located near highly regarded primary and secondary schools.
- Easy access to Ayr Town centre and coastline just a short drive from Ayr's town centre, beach, and train station.











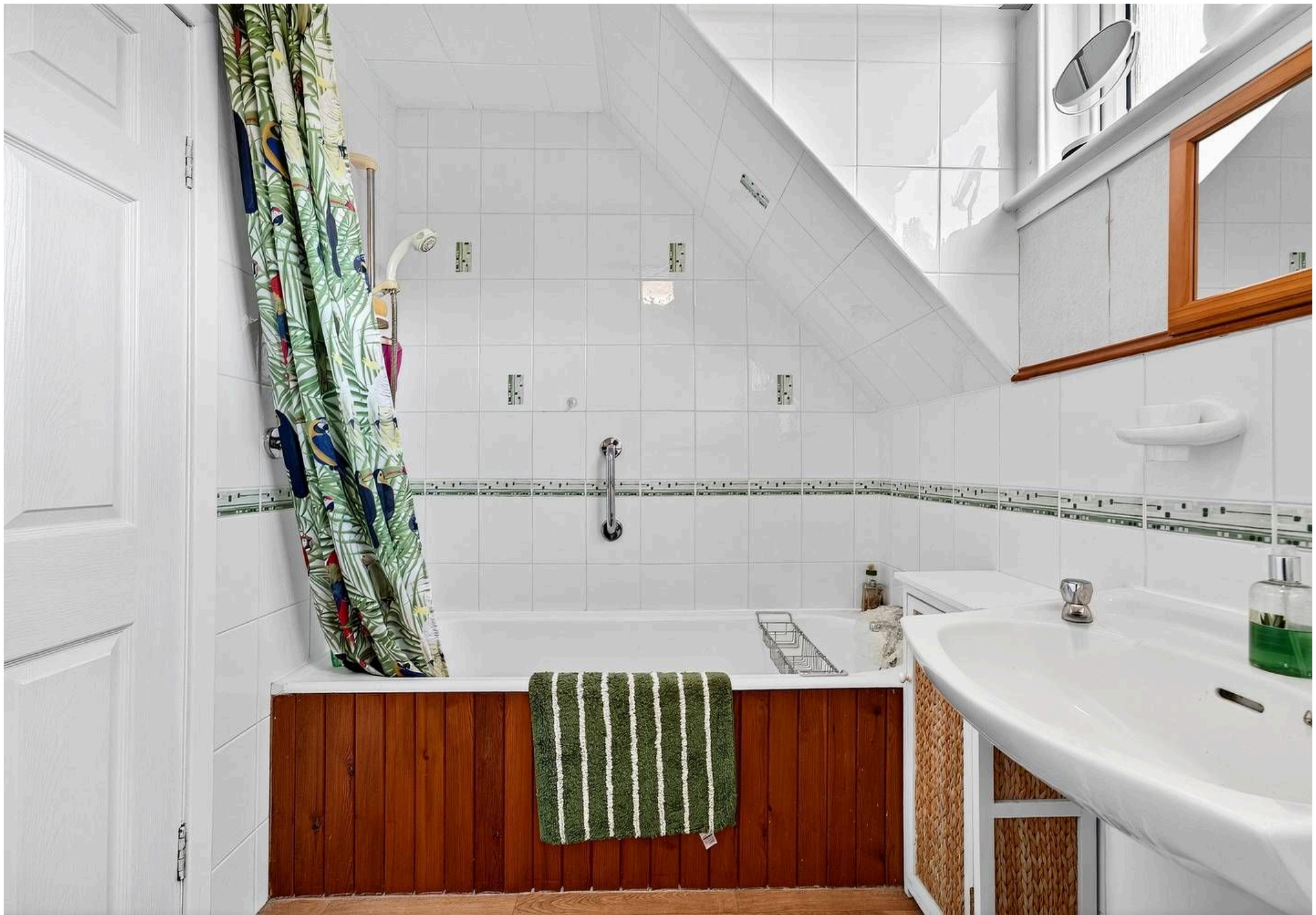














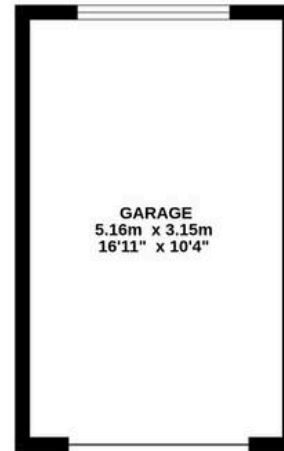
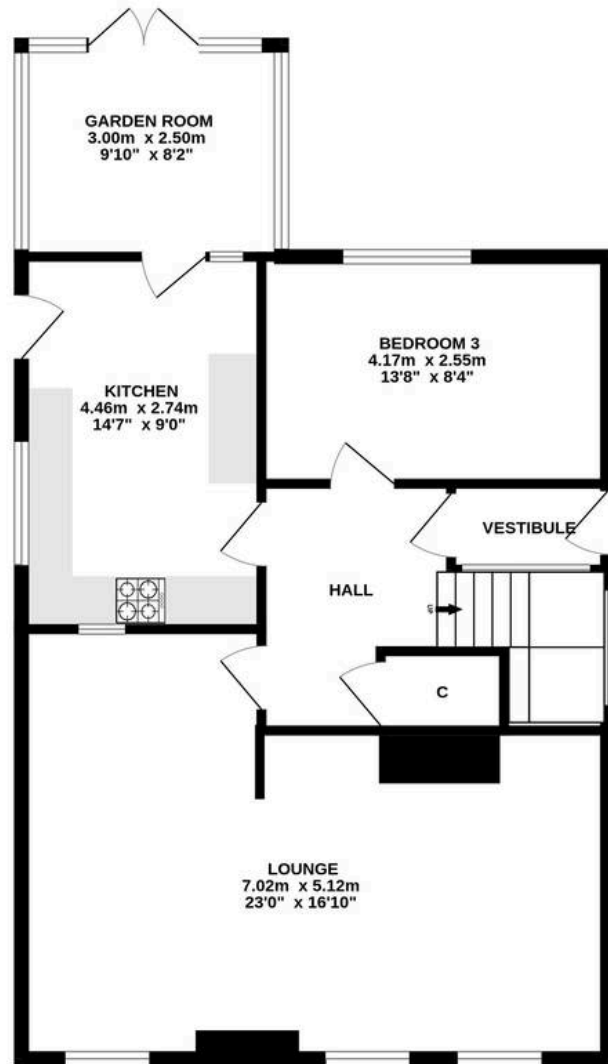




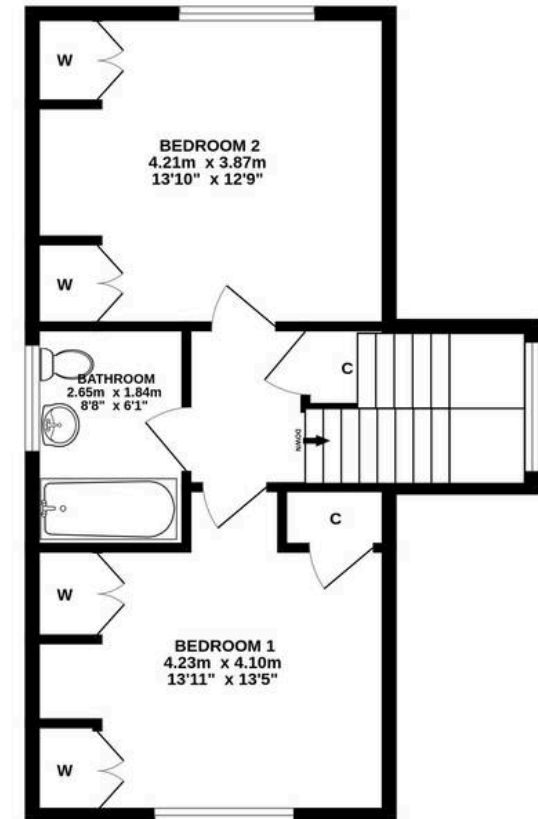




GROUND FLOOR



1ST FLOOR



ALL SIZES TAKEN AT WIDEST POINTS

Whilst every attempt has been made to ensure the accuracy of the floorplan contained here, measurements of doors, windows, rooms and any other items are approximate and no responsibility is taken for any error, omission or mis-statement. This plan is for illustrative purposes only and should be used as such by any prospective purchaser. The services, systems and appliances shown have not been tested and no guarantee as to their operability or efficiency can be given.
Made with Metropix ©2025



Donald Ross Residential Ayr

Donald Ross, 1 Beresford Terrace – KA7 2ER

01292 288222 • office@donaldross.co.uk • www.donaldross.co.uk

While every effort has been made to ensure accuracy, buyers should independently verify all details and review the Home Report before submitting an offer. No warranty or representation is given regarding the property, and neither the agent nor the seller accepts responsibility for any inaccuracies. Buyers must satisfy themselves on all legal aspects.