



Shipton Court, Shipton-Under-Wychwood



In Shipton-under-Wychwood, lies the magnificent Grade II* listed, Shipton Court, enclosed within a stone wall and a short drive stone column entrance, this four storey Jacobean country house, now houses a small collection of apartments and houses.

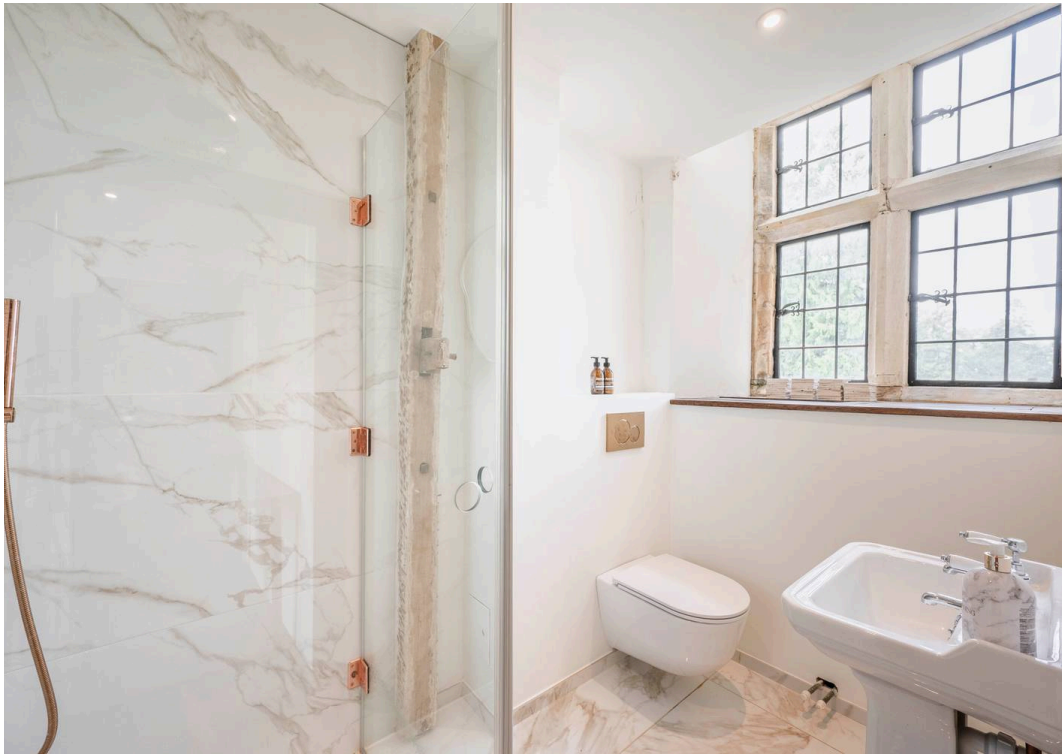
Upon entering this two-bedroom apartment through the communal hallway of a 17th-century country house, you are greeted by a welcoming hallway. At the centre, you'll find the entrance to a spacious, dual aspect, open-plan living and dining area, complete with exposed brickwork and a cozy log burner. Beyond the dining area lies a newly fitted stylish shaker-style galley kitchen, finished with wooden worktops and elegant copper accents.

At the North end of the apartment, you'll find a bright double bedroom featuring a large original open fireplace and a modern en-suite shower room, with views overlooking the private gardens. At the opposite end of the hallway is another airy double bedroom, with a feature wall decorated with House of Hackney interior wallpaper, and an en-suite shower room that includes a luxurious rainforest shower and exposed brickwork. This en-suite also has convenient access from the living room.

This property offers a rare opportunity to own an apartment in one of the countries original Jacobean properties, and with its neutral interior, this provides the new owner with a blank canvas to make it their own.

Shipton Court is situated within the expansive Grade II listed formal gardens, designed by Paul Thomas, are open to the residents for their exclusive use, along with an additional private garden a short walk from the property. There is also allocated parking for two cars.







There is the potential to purchase both properties together and combine the apartments.

EPC: D

Council Tax Band: E

Tenure: Leasehold

Years Remaining: 952

Service Charge: £300 per month

Steeped in a rich, historic significance to the village, Shipton Court was originally built by the Lacey family circa 1603, who occupied the country house until 1663, when Sir Compton Reade (who owned the majority of the village) purchased the property for his family to live in, it was then passed down through the generations. In 1868, John Reade, left the property to his footman, on the condition he took the Reade name, he held onto the property until the early 20th century. Following the sale the property was extensively renovated and altered, and passed through several hands over the next 50 years, during this time it was occupied by the army during the second World War. Finally in 1977, the country house was divided into the apartments and houses that are available today.

The village itself offers a thriving community and excellent local amenities, including the Wychwood Wild Garden, The Lamb Inn, and Rise & Flour Bakery. The renowned Soho Farmhouse is also just a 20-minute drive away.

Main House Approx. Gross Internal Area:- 132.43 sq.m. 1425 sq.ft.



FOR ILLUSTRATIVE PURPOSES ONLY-NOT TO SCALE

The position & size of doors, windows, appliances and other features are approximate only.

□□□ Denotes restricted head height

www.dmlphotography.co.uk

High Street, Bourton-on-the-Water
Gloucestershire, GL54 2AN

harrisonhardie.co.uk 01451 822977