



Pearl & Chance

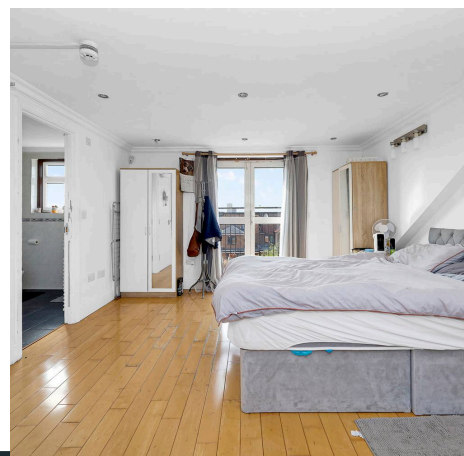
The Vale, London, NW11  
£4,600 pcm

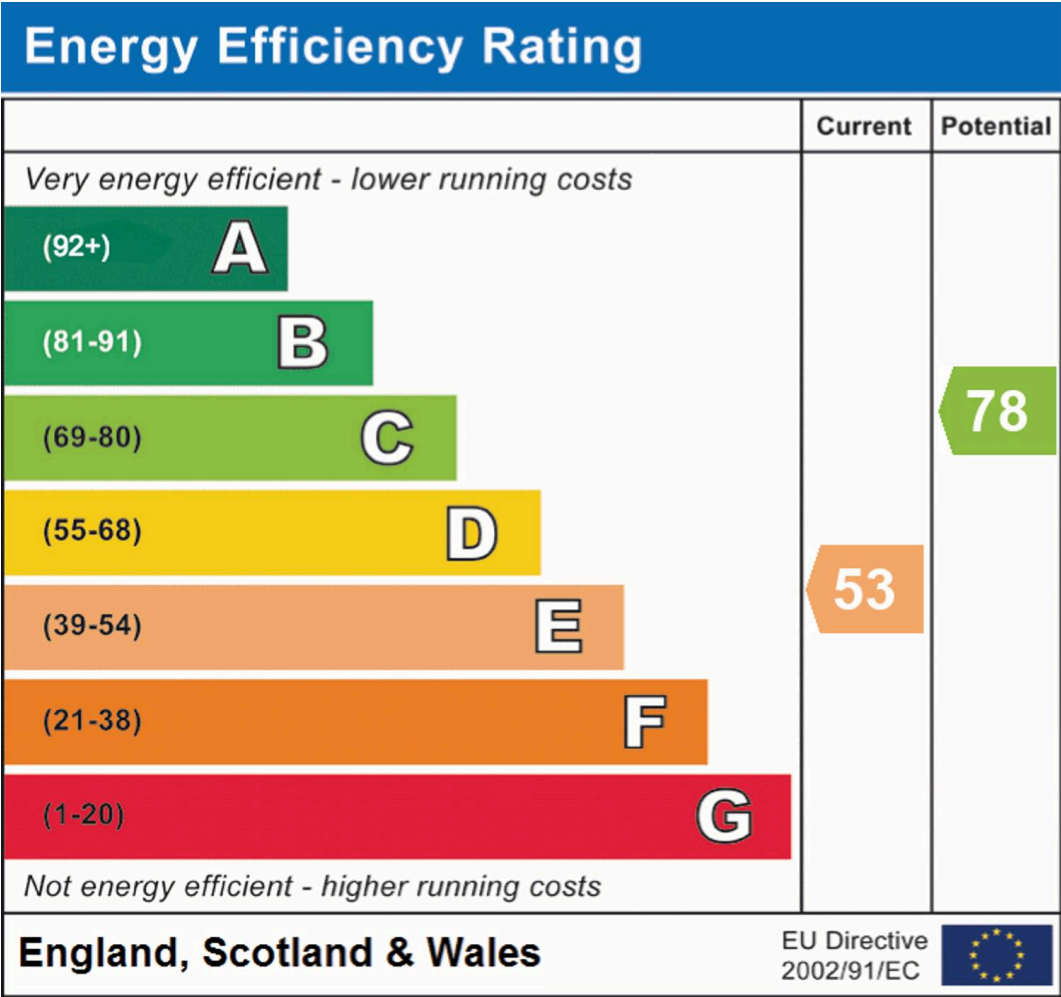


## The Vale, London, NW11

This four-bedroom house on The Vale is arranged over three floors and offers approximately 1,542 sq ft of well-planned living space. The layout is flexible and can be used as a four or five-bedroom property, with two separate reception rooms, a spacious kitchen diner, three bathrooms, a Juliette balcony, and off-street parking. The ground floor comprises a bright front reception room, a second lounge or dining room to the rear, a generous kitchen diner with direct access to the garden, and a shower room. The upper floors provide four bedrooms, including a principal bedroom with an en suite shower room and Juliette balcony. A third bathroom completes the layout. To the rear is a private garden, and the front driveway provides off-street parking. Golders Green, Brent Cross, and Cricklewood are all within easy reach, with local shops, cafés, and amenities close by. Road connections are excellent with the A406, A41, M1, and A5 all nearby, ideal for those needing quick access in and out of London.

- Available End of July
- Deposit £6,369
- Council Tax Band: E
- Four Bedrooms
- Two Reception Rooms
- Three Bathrooms
- Downstairs WC
- Off Street Parking









## Pearl & Chance

1 Hoop Lane, Golders Green - NW11 8JR

0208 059 5559

[info@pearlandchance.co.uk](mailto:info@pearlandchance.co.uk)

<http://pearlandchance.co.uk>



IMPORTANT: These sales particulars have been prepared as a general guide only. A detailed survey has not been carried out, nor the services, appliances and fittings tested. Room sizes should not be relied upon for furnishing purposes and are approximate. If floor plans are included, they are for guidance only and illustration purposes only and may not be to scale. If there are any important matters likely to affect your decision to buy, please contact us before viewing the property.