



Bay View Court, La Route De St. Aubin, St. Helier
£1,895,000

BROADLANDS
FINDING YOU A HOME SINCE 1972

Bay View Court, La Route De St. Aubin

St. Helier, Jersey

- NO QUALIFICATIONS REQUIRED
- Second floor luxury apartment
- Panoramic sea views
- Very convenient location
- Secure garage parking plus store
- Tenanted until February 2026
- Please contact Nigel on 07797 718233 or nigel@broadlandsjersey.com



Bay View Court, La Route De St. Aubin

St. Helier, Jersey

NO HOUSING QUALIFICATIONS REQUIRED. A rare opportunity to acquire a luxury Jersey residence without having to go through the process.

This second floor apartment is in absolutely walk in condition and the new owner will want for nothing. The apartment is designed to make the most of the spectacular views from the living room, main bedroom and kitchen. There is Amtico flooring throughout the main living areas and wide entrance hall and a neutral decor in all rooms.

Located just a short distance from the town centre, you will probably not even need to take advantage of the 2 secure garage spaces that come with it, as there is a regular bus route right outside and a cycle track / promenade in front of you.

The property has a tenant in situ who has a lease until February 2026 but is available for viewing.





Living

Large lounge diner with open plan kitchen. Kitchen has all appliances. Sliding doors from lounge to South facing balcony.

Sleeping

3 double bedrooms with the principle being en suite and having access to the balcony. House bathroom which also acts as a cloakroom.

Services

All mains (no gas) Electric underfloor heating.

Service charges

Service charges are approx. £1,467.70 / quarter paid biannually, to include: Expenses block A: Cleaning, repairs & Maintenance, electricity, lift Maintenance, lift Insurance, lift Telephone, Parish rates & insurance Common Expenses: Gardening, water rates. management fees, accountancy fees. company secretarial fees, bank charges, painting, registration fee, meeting room & sundries.

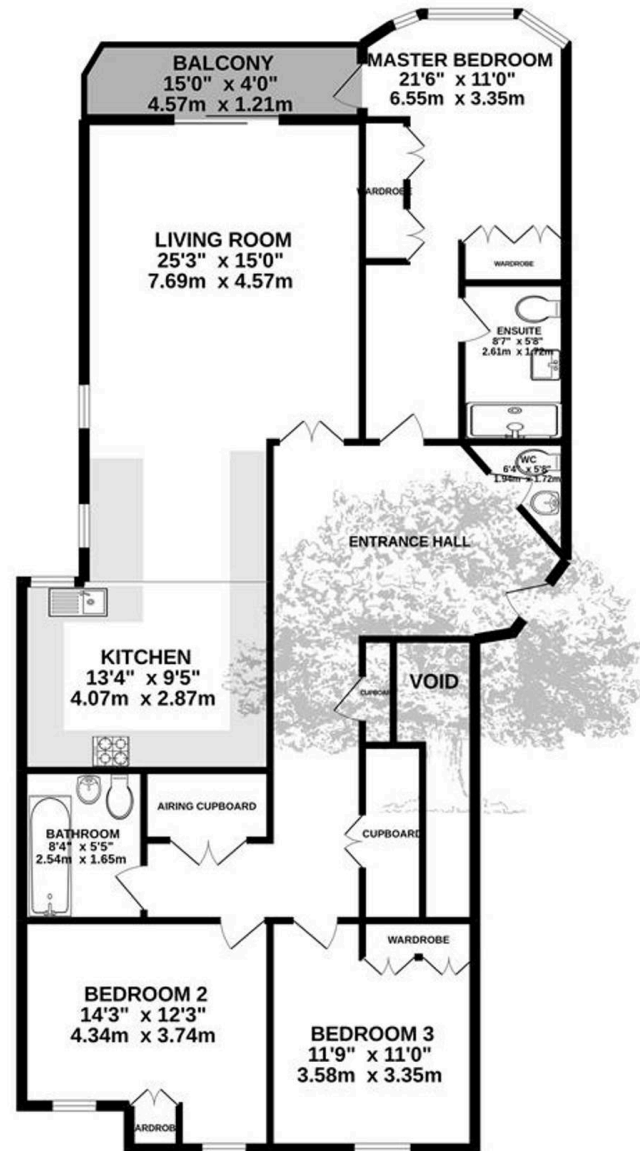
Restrictions

Regret this development doesn't allow pets.





1446 sq.ft. (134.3 sq.m.) approx.



TOTAL FLOOR AREA : 1446 sq.ft. (134.3 sq.m.) approx.

Whilst every attempt has been made to ensure the accuracy of the floorplan contained here, measurements of doors, windows, rooms and any other items are approximate and no responsibility is taken for any error, omission or mis-statement. This plan is for illustrative purposes only and should be used as such by any prospective purchaser. The services, systems and appliances shown have not been tested and no guarantee as to their operability or efficiency can be given.
Made with Metropix ©2022



Broadlands

Broadlands Estates, Library Place - JE2 3NL

01534 880770 • enquiries@broadlandsjersey.com • www.broadlandsjersey.com/

BROADLANDS

FINDING YOU A HOME SINCE 1972