



2 Stair Drive, Drongan, KA6 7DP

In Excess of **£85,000**

DONALD
ROSS
RESIDENTIAL



2 Stair Drive

Drongan, Ayr KA6 7DP

A fully renovated 2-bed end-terrace villa with floored and lined attic with a fixed staircase, lounge with media wall, modern kitchen and a large detached double garage. Stylish, versatile, and move-in ready.

Council Tax band: E

Tenure: Freehold

EPC Energy Efficiency Rating: C

EPC Environmental Impact Rating: D

- Fully Renovated Throughout - Large Corner Plot
- Stylish Lounge with Bespoke Media Wall
- Modern Fitted Kitchen with Integrated Appliances
- Two Well-Proportioned Bedrooms
- Floored & Lined Attic with Fixed Staircase
- Modern Family Bathroom
- Large Monobloc Driveway
- Detached Double Garage with Power & Lighting
- Enclosed Rear Garden - Perfect for Entertaining
- Popular Residential Location Close to Local Amenities









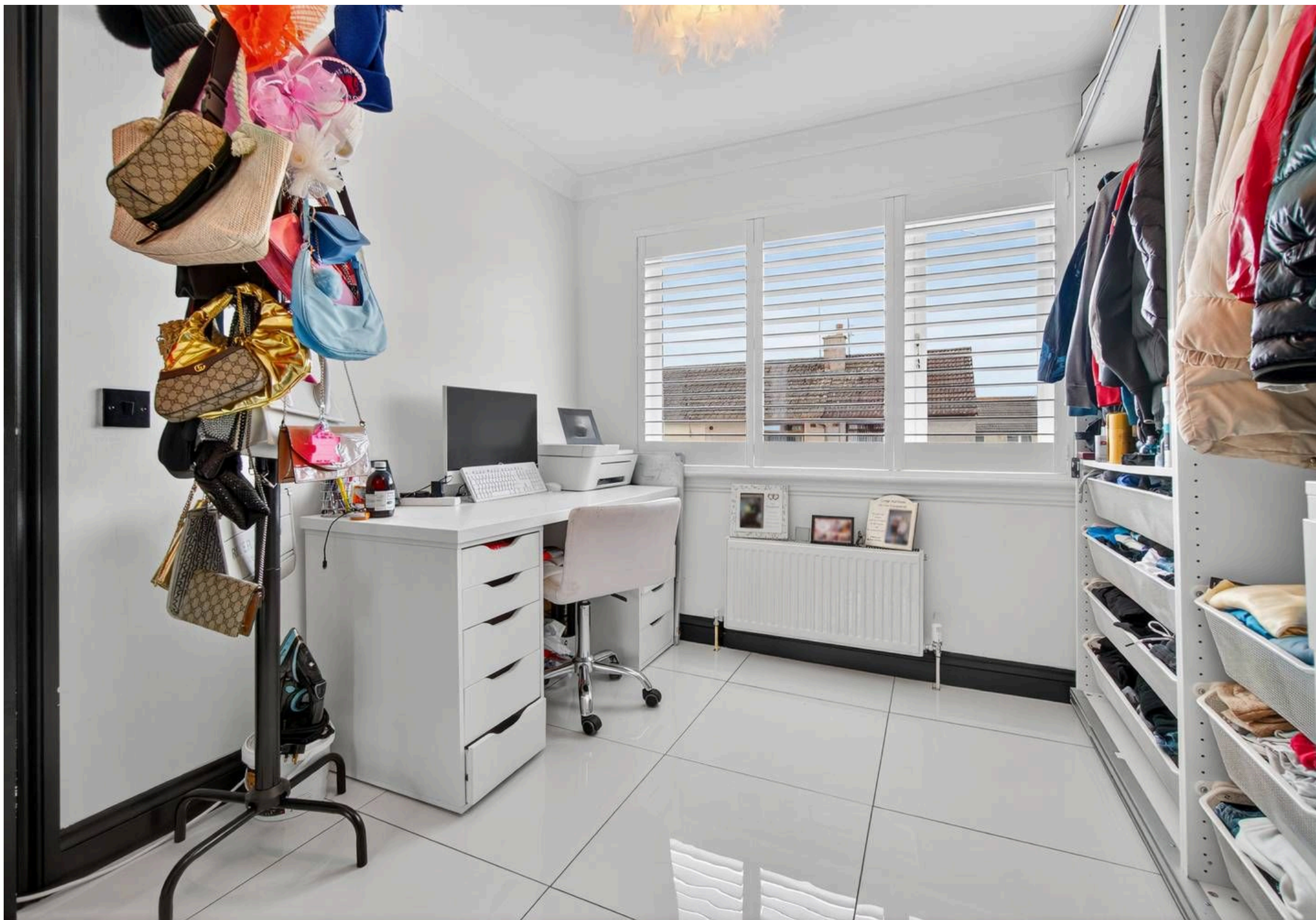
















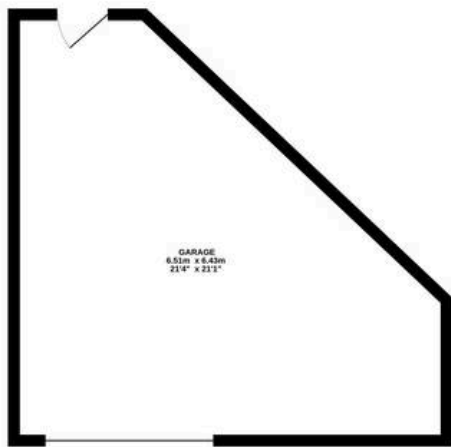




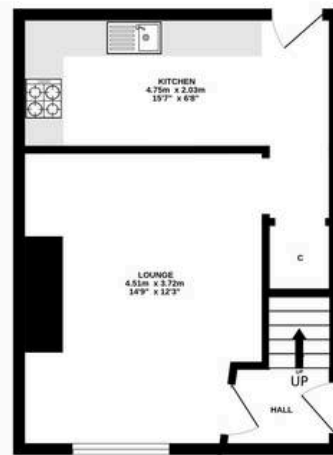




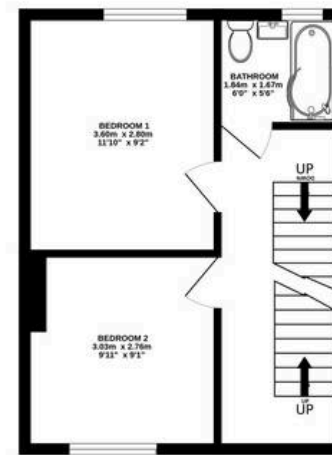
BASEMENT



GROUND FLOOR



1ST FLOOR



2ND FLOOR



ALL MEASUREMENTS TAKEN AT WIDEST POINT.

Whilst every attempt has been made to ensure the accuracy of the floorplan contained here, measurements of doors, windows, rooms and any other items are approximate and no responsibility is taken for any error, omission or mis-statement. This plan is for illustrative purposes only and should be used as such by any prospective purchaser. The services, systems and appliances shown have not been tested and no guarantee as to their operability or efficiency can be given.
Made with Metropix ©2025



Donald Ross Residential Ayr

Donald Ross, 1 Beresford Terrace - KA7 2ER

01292 288222 • office@donaldross.co.uk • www.donaldross.co.uk

While every effort has been made to ensure accuracy, buyers should independently verify all details and review the Home Report before submitting an offer. No warranty or representation is given regarding the property, and neither the agent nor the seller accepts responsibility for any inaccuracies. Buyers must satisfy themselves on all legal aspects.