



Henfield Close, N19 3UL

**DAVID
ANDREW**

your
most
valuable
asset

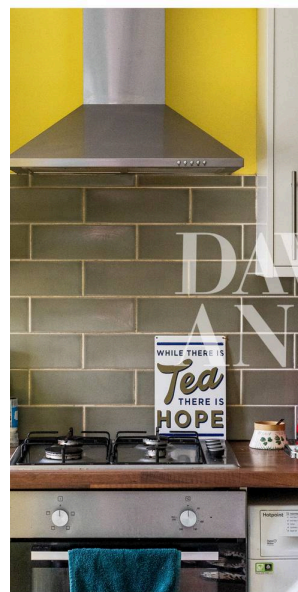
Presenting a stunning, bright, and spacious one-bedroom apartment boasting delightful city views. Situated just moments away from Archway Northern Line station, this property offers easy access to central London and a wide range of local amenities, fashionable shops, museums, and restaurants.

The residence features vibrant hues, abundant natural light, a generous double bedroom, a separate fully equipped kitchen, a living room with access to a spacious balcony showcasing breathtaking views of the Shard and St. Paul's Cathedral. Additional advantages include a charming communal garden.

Conveniently positioned a short stroll from Archway Station, the property is surrounded by unique shops, cafes, and local attractions in the eclectic neighbourhood of Archway. Residents can also enjoy the nearby shopping options in Highgate and Crouch End, along with easy access to the scenic Hampstead Heath for leisurely walks. Offered Furnished and available from the 1st of September.

Council Tax band: C, EPC Energy Efficiency Rating: D

- One Bedroom Apartment
- Spacious Terrace with amazing Views
- Separate Fully Fitted Kitchen
- Excellent Condition
- Ample Storage
- Close to amenities
- Communal Heating/Hot Water (Included in rent)
- Excellent transport links
- Offered Furnished
- Available 1st of September



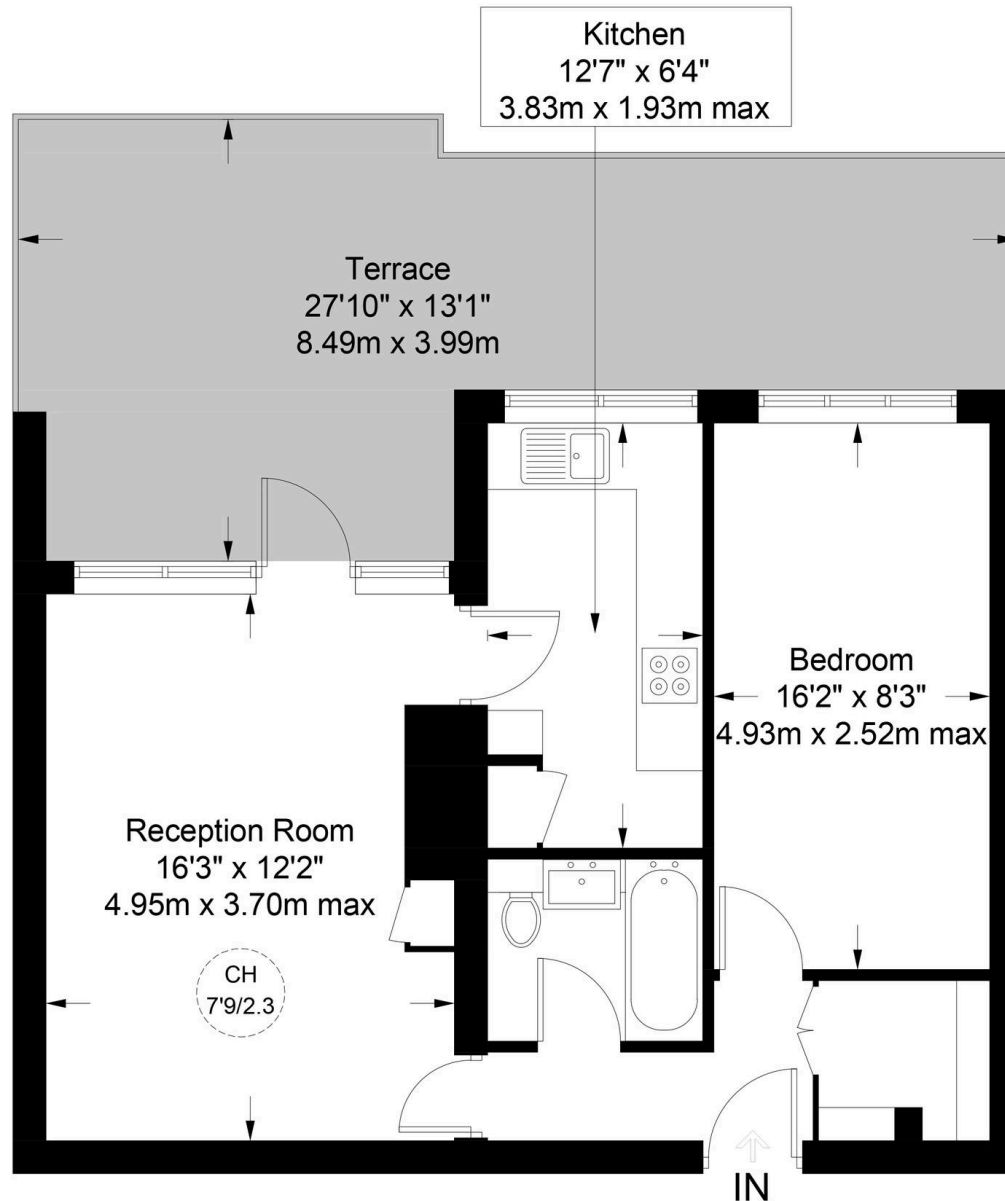




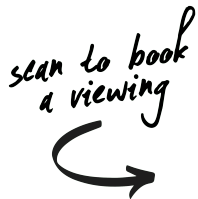
Henfield Close , N19 3UL

Approximate Gross Internal Area = 534 sq ft / 49.6 sq m

DAVID ANDREW | your most valuable asset



Fifth Floor



**Certified
Property
Measurer**

This plan is for layout guidance only. Not drawn to scale unless stated. Windows and door openings are approximate. Whilst every care is taken in the preparation of this plan, please check all dimensions, shapes and compass bearings before making any decisions reliant upon them. (956305)



has been exercised in the of these particulars, out the property must not be as representations of fact. Prospective applicants and rely upon their own id those of professional s. David Andrew Estates bility for any error contained in these particulars.

Archway Office

671 Holloway Road
London, N19 5SE

T (0)20 7619 3750

Highbury Office

90 Highbury Park
London, N5 2XE

T (0)20 7354 9111

Finsbury Park Office

167 Stroud Green Road
London, N4 3PZ

T (0)20 7281 2000

Property Management Office

235 Blackstock Road
London, N5 2LL

T (0)20 7354 9222

