



HARRISON  
Sales &  
Lettings  
HARDEN

Oakeys Close, Stow On The Wold



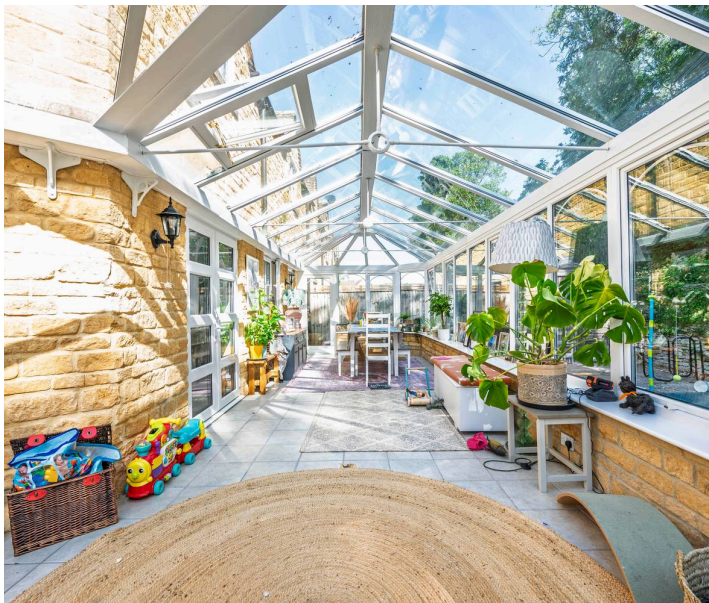


Situated within walking distance of the town centre, this spacious four bedroom, townhouse in Oakeys Close, offers the perfect blend of modern living, and would make for an ideal family home or a good opportunity for investors.

Through the front door, you are welcomed by a hallway with access to a downstairs WC, stairs to the first floor, and straight ahead leads off to the bright living room, with fireplace and double doors leading out to the spacious conservatory, which runs along the width of the house at the rear. Following the hallway round to the left, you will find the kitchen, with; integrated appliances, including a dishwasher, oven and double fridge; a breakfast bar, and access to the conservatory and the garage, which has the appropriate fixtures for the large washing appliances.

On the first floor, you'll find two generously sized double bedrooms, one with ensuite and built-in wardrobes, a study/office, and a well-appointed family bathroom. The top floor boasts two additional double bedrooms, one of which would be perfect for an office/study.

At the rear of the property is a low-maintenance, walled garden featuring a lawn, a patio area, and a mature tree just beyond the wall that provides added privacy. The garden also includes a shed for additional storage.



EPC: C

Council Tax Band: E

Tenure: Freehold

What3Words: ///meals.hockey.cookies

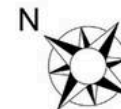
Agents note: Please note that some stock images have been used.







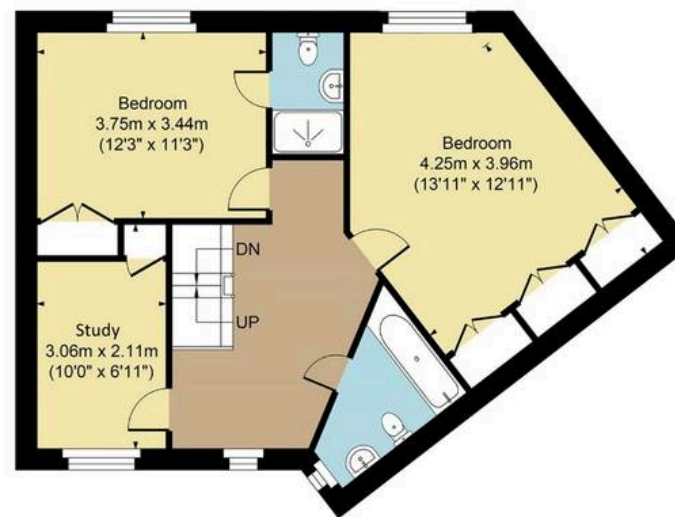
Main House Approx. Gross Internal Area:- 160.8 sq.m. 1731 sq.ft.  
 Garage Approx. Gross Area:- 11.07 sq.m. 119 sq.ft.  
 Total Approx. Gross Area:- 171.87 sq.m. 1850 sq.ft.



Ground Floor



Second Floor



First Floor

FOR ILLUSTRATIVE PURPOSES ONLY-NOT TO SCALE  
 The position & size of doors, windows, appliances and other features are approximate only.  
 □□□ Denotes restricted head height  
[www.dmlphotography.co.uk](http://www.dmlphotography.co.uk)