



White Eaves, Coxmoor Road, Sutton in Ashfield, NG17 5LF
£770,000



White Eaves

Coxmoor Road, Sutton-In-Ashfield

Luxurious 4-bed detached bungalow on Coxmoor Road with stunning countryside views. Set in 1-acre gardens with 2.73-acre paddock. Spacious interior, double garage, office, and ample outdoor space for equestrian lifestyle. Tranquil retreat near Sherwood Observatory. Council Tax band: G

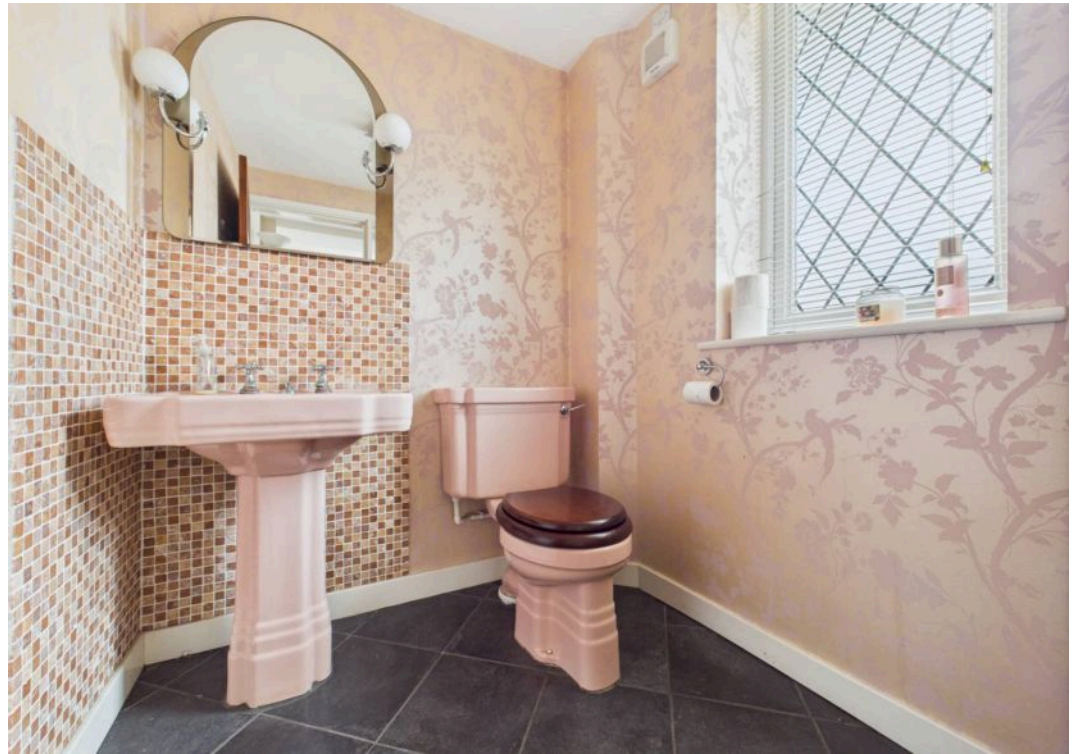
Tenure: Freehold

EPC Energy Efficiency Rating: C

EPC Environmental Impact Rating: D

- Impressive and extensive detached bungalow with countryside views set in 1 acre of gardens with an additional 2.73 acre paddock to the rear
- Four double bedrooms, principal bedroom with modern en-suite shower room/Wc
- Entrance hall with adjoining ground floor Wc
- Lounge with fireplace and dual aspect windows, separate dining room
- Inner hallway/third reception room, conservatory with feature timber panelled ceiling, office
- Dining kitchen with integrated appliances, adjoining utility room
- Two family bathrooms, one with feature roll top bath and both with separate shower cubicles
- Driveway with electric gates provides ample parking for numerous vehicles, double garage with electric door
- 2.73 acres of paddock land accessed from the bottom of the rear garden
- Highly desirable location on Coxmoor Road











Floor 0

Approximate total area⁽¹⁾

304.4 m²

3277 ft²

(1) Excluding balconies and terraces

Calculations reference the RICS IPMS 3C standard. Measurements are approximate and not to scale. This floor plan is intended for illustration only.

GIRAFFE360



David James Estate Agents

43 Forest Street, Sutton-in-Ashfield - NG17 1DA

01623 554084 • sutton@david-james.com • www.david-james.com