



5 Pleasley Road, Skegby, NG17 3BS
£175,000



5 Pleasley Road

Skegby, Sutton-In-Ashfield

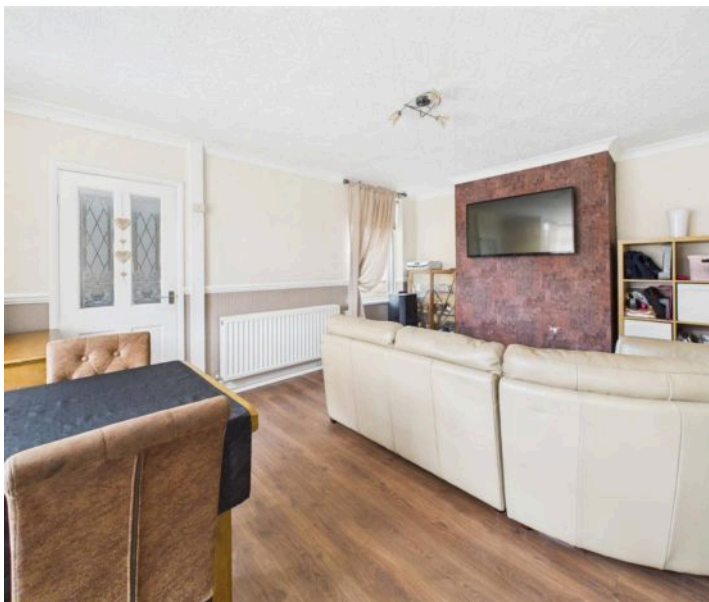
Council Tax band: B

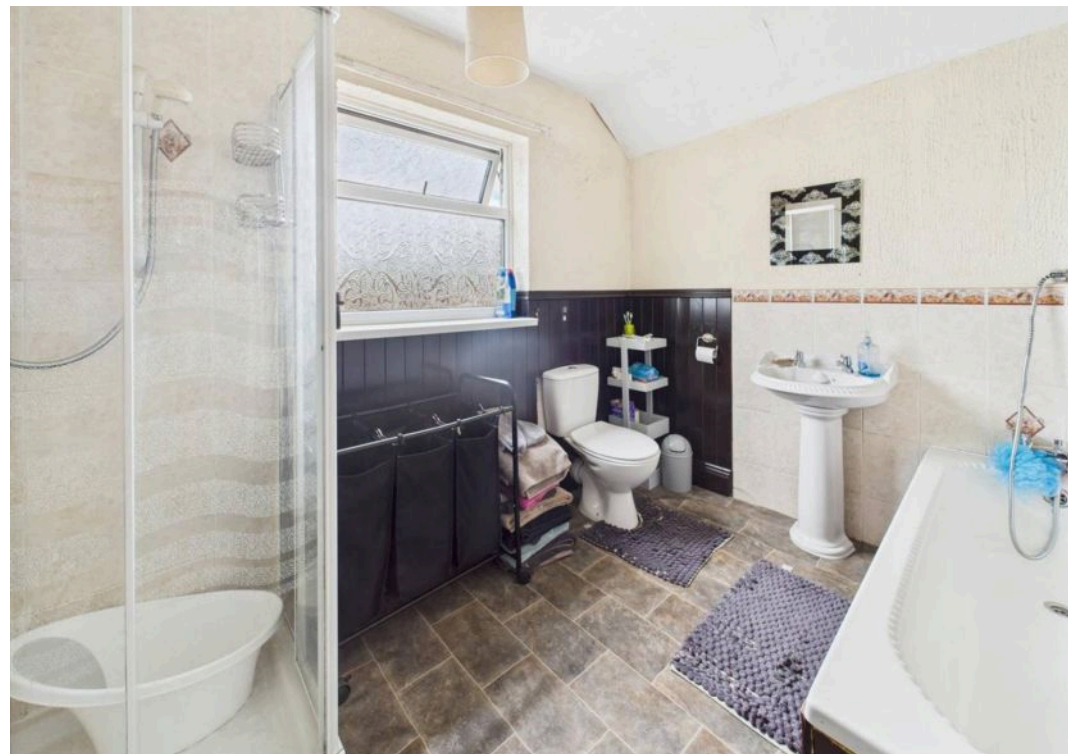
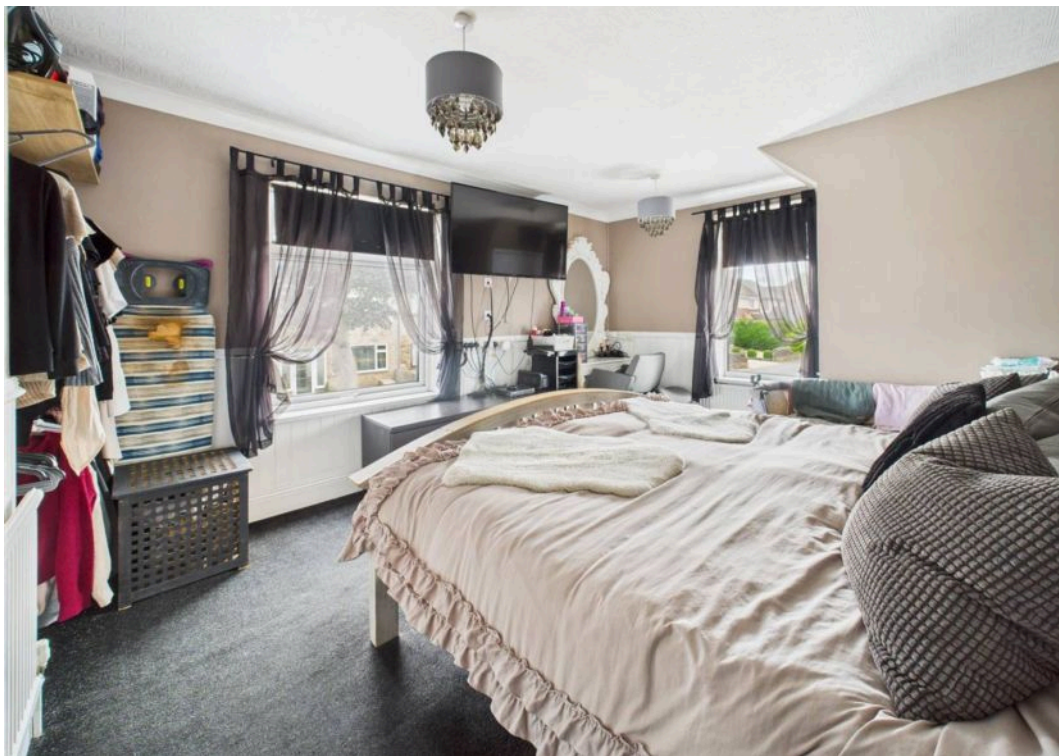
Tenure: Freehold

EPC Energy Efficiency Rating: E

EPC Environmental Impact Rating:

- Substantial and deceptive end house (former farmhouse)
- Three bedrooms and a second floor loft space
- Entrance porch and hallway
- Lounge with bay window
- Separate dining room with bay window to the side elevation and laminate flooring
- Kitchen with tiled flooring and a range of Walnut panelled units
- Rear porch and ground floor Wc with tiled flooring
- First floor bathroom/Wc with white suite and separate shower cubicle with electric shower
- Gas central heating, UPVC double glazing
- Enclosed lawned garden with patio area situated to the side of the property







Floor 0



Floor 1



Floor 2

Approximate total area^m

135.4 m²

1457 ft²

Reduced headroom

6.3 m²

68 ft²

(1) Excluding balconies and terraces

Reduced headroom

..... Below 1.5 m/5 ft

Calculations reference the RICS IPMS 3C standard. Measurements are approximate and not to scale. This floor plan is intended for illustration only.

GIRAFFE360



David James Estate Agents

43 Forest Street, Sutton-in-Ashfield - NG17 1DA

01623 554084 • sutton@david-james.com • www.david-james.com