



Grenville Road, N19 4EH
£1,900 pcm

**DAVID
ANDREW** | your
most
valuable
asset

Elegantly situated in a quiet residential location, this remarkable apartment presents a delightful one-bedroom abode, totaling 485sqft/45sqm of carefully crafted living space.

The property boasts a spacious reception room, exuding a sense of tranquility with an abundance of natural light filtering through the double glazed windows. A separate fully fitted kitchen complements the practical layout, providing a charming space for culinary creations. A rare opportunity to embrace comfort and convenience in a prime North London location awaits discerning individuals seeking a stylish urban retreat.

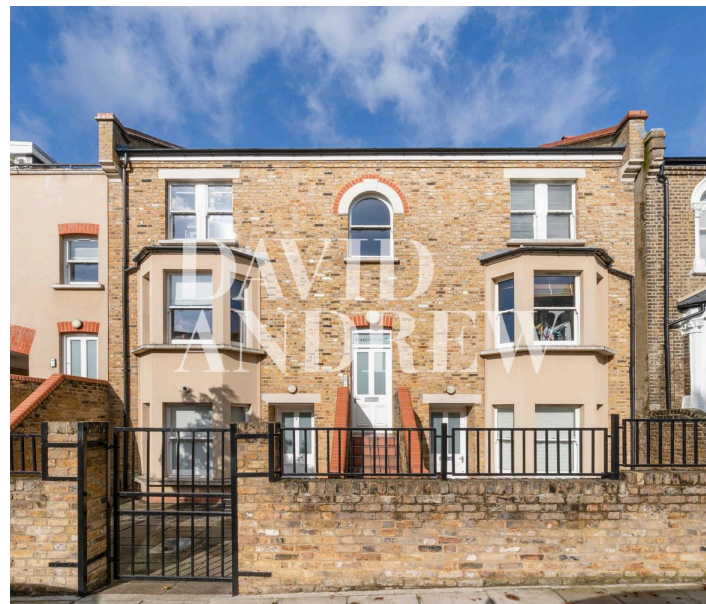
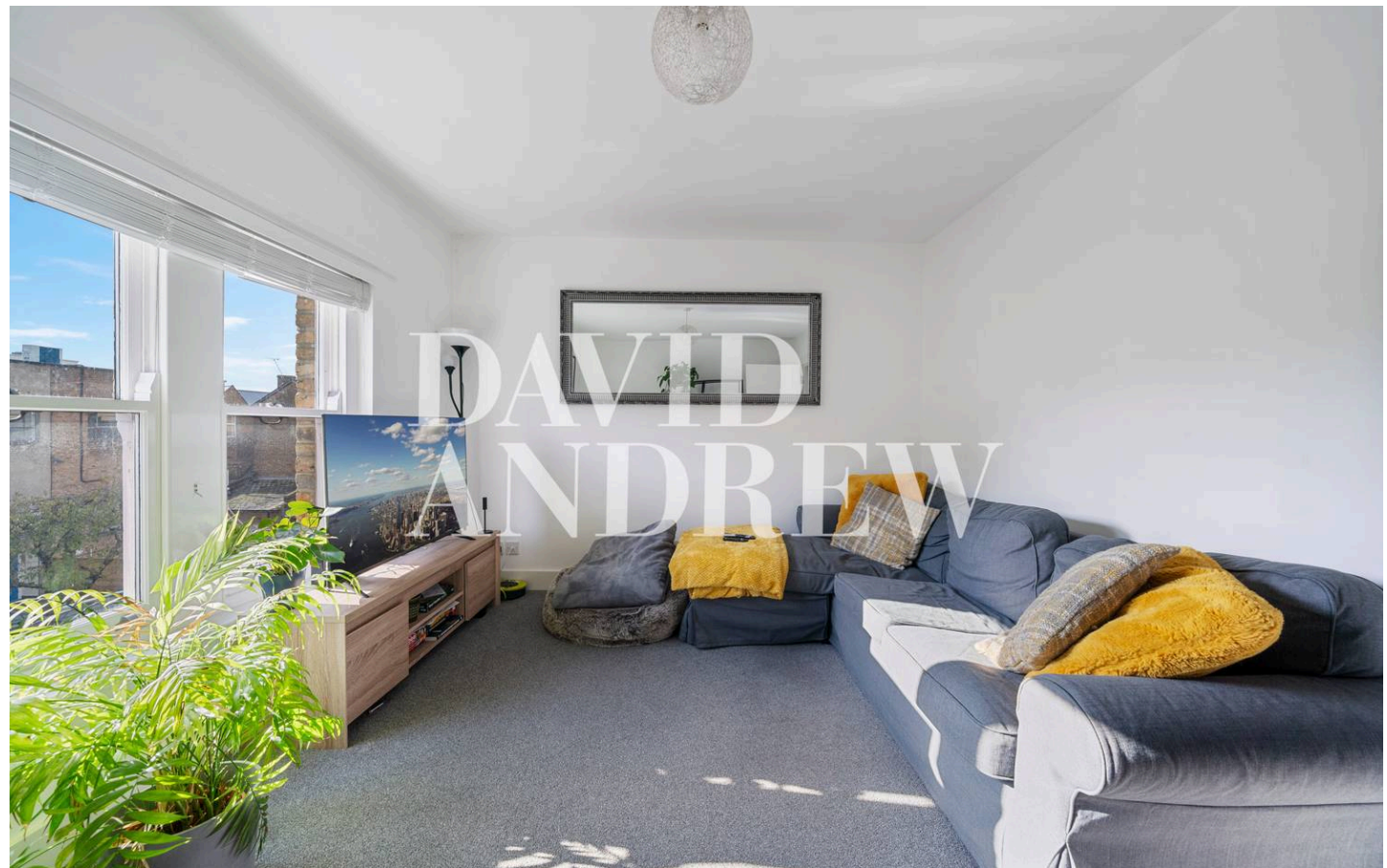
Prominently positioned within excellent reach of transportation links, residents will revel in the convenience of strolling distance to Crouch Hill and Finsbury Park Stations, making commuting a breeze. Offered furnished and available from the 5th of September, this residence epitomises modern urban living.

Council Tax band: C

EPC Energy Efficiency Rating: C

EPC Environmental Impact Rating: B

- One Bedroom
- Spacious Reception Room
- Separate Fully Fitted Kitchen
- Comprising 485sqft/45sqm
- Natural Light Throughout
- Quiet Residential Location
- Excellent Location
- Walking Distance to Crouch Hill and Finsbury Park Stations
- Offered Furnished
- Available 05th of September



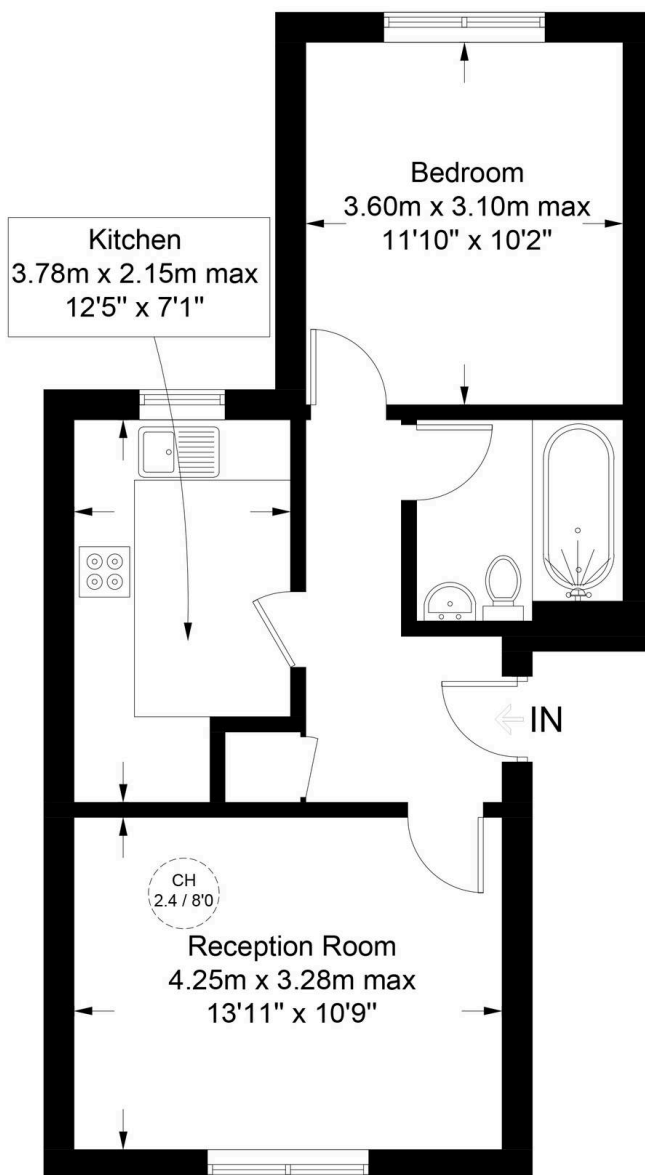




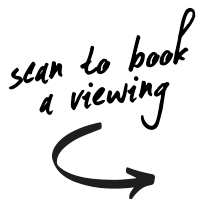
Francis Court , N19

Approximate Gross Internal Area = 485 sq ft / 45.1 sq m

**DAVID
ANDREW** | your
most
valuable
asset



Second Floor



scan to book
a viewing



**Certified
Property
Measurer**

This plan is for layout guidance only. Not drawn to scale unless stated. Windows and door openings are approximate. Whilst every care is taken in the preparation of this plan, please check all dimensions, shapes and compass bearings before making any decisions reliant upon them. (ID1020703)

**DAVID
ANDREW** | your
most
valuable
asset

has been exercised in the
of these particulars,
out the property must not be
as representations of
fact. Prospective applicants
and rely upon their own
id those of professional
s. David Andrew Estates
bility for any error contained
in these particulars.

Archway Office

671 Holloway Road
London, N19 5SE

T (0)20 7619 3750

Highbury Office

90 Highbury Park
London, N5 2XE

T (0)20 7354 9111

Finsbury Park Office

167 Stroud Green Road
London, N4 3PZ

T (0)20 7281 2000

Property Management Office

235 Blackstock Road
London, N5 2LL

T (0)20 7354 9222

