



7 Plompton Close, HARROGATE

Harrogate

Guide Price £370,000



MYRINGS



7 Plompton Close

HARROGATE, Harrogate

A very well presented 2/3 bedroom extended semi-detached dormer bungalow standing in the corner of a quiet cul-de-sac with private lawned gardens, side driveway and garage located just off Hookstone Chase close to a regular bus network and Morrison's Supermarket.

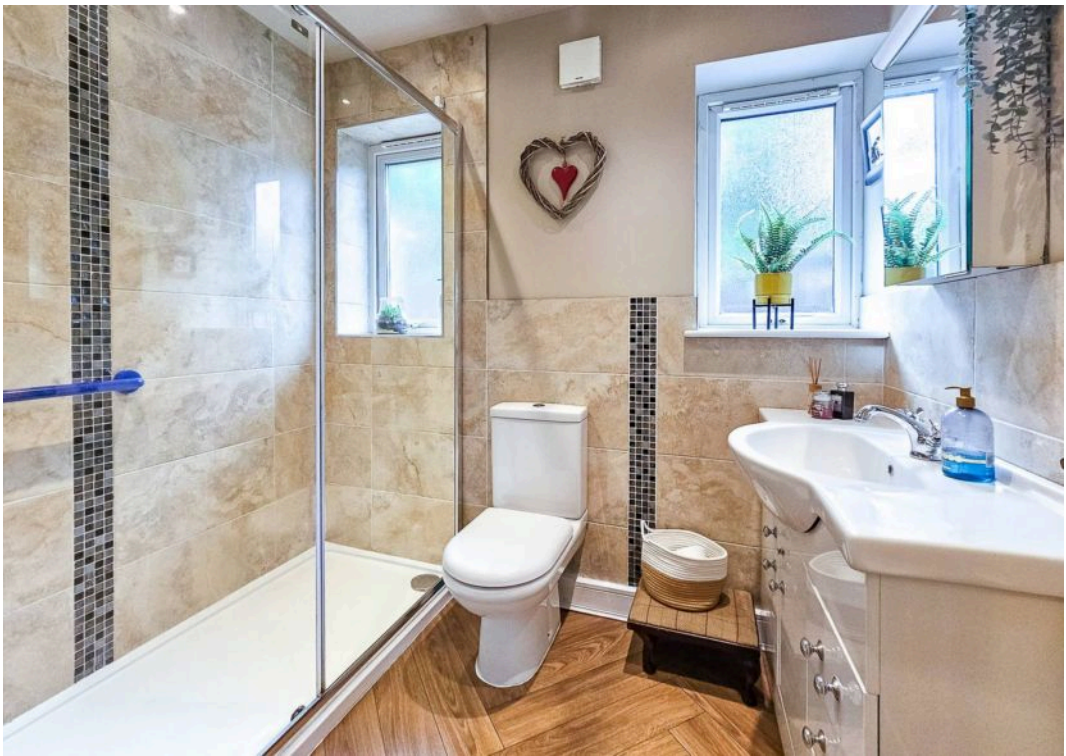
Council Tax band: C

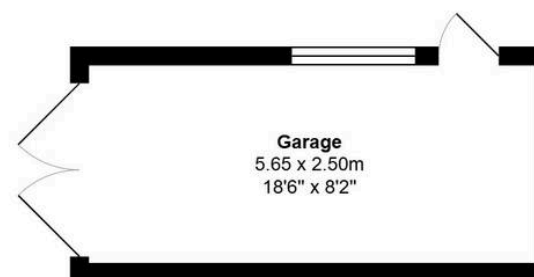
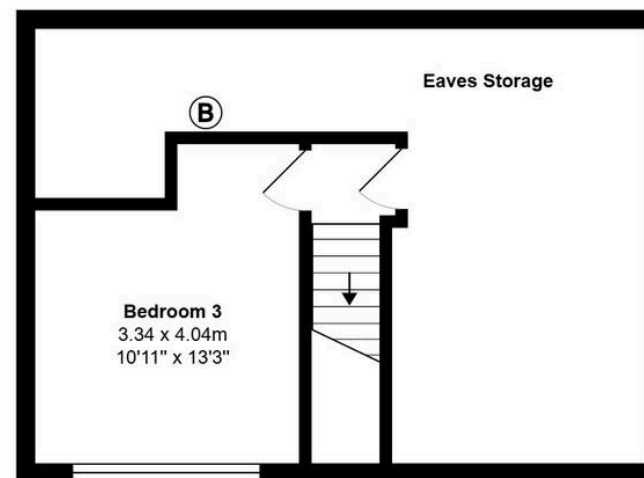
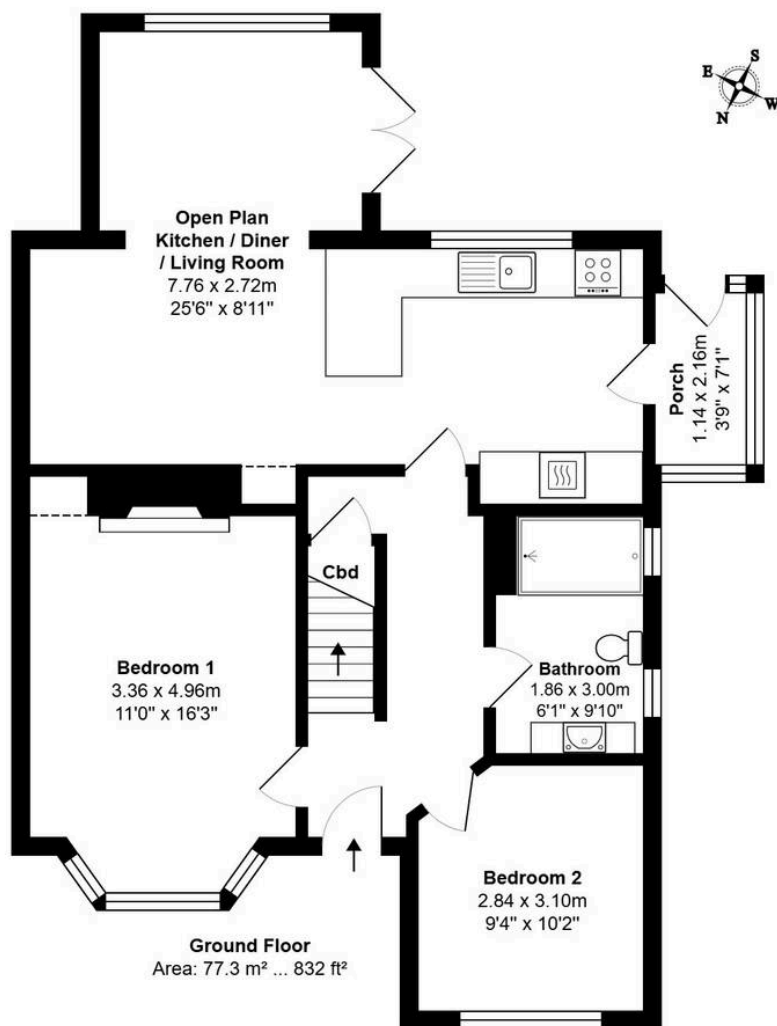
Tenure: Freehold

- QUIET CUL DE SAC LOCATION
- GOOD SIZED CORNER PLOT LAWNED GARDENS
- MODERN KITCHEN
- DRIVEWAY & GARAGE
- EXTENDED REAR SUN ROOM



MYRINGS





Total Area: 93.6 m² ... 1007 ft² (excluding eaves storage and garage)





Myrings Estate Agents

Myrings Estate Agents Ltd, 10 Princes Square - HG1 1LX

01423

566400

▪ enquiries@myringsestateagents.com ▪ <http://myringsestateagents.com/>

