



15 Grimesmoor Road, Calverton – NG14 6GX

Guide Price **£260,000 – £270,000**

DavidJames
the estate agent



15 Grimesmoor Road

Calverton, Nottingham

GUIDE PRICE £260,000–£270,000 Well-presented 4-bed semi-detached family home in Calverton! Bright lounge/dining room, superb conservatory, kitchen and modern bathroom plus an enclosed rear garden!

Council Tax band: A

Tenure: Freehold

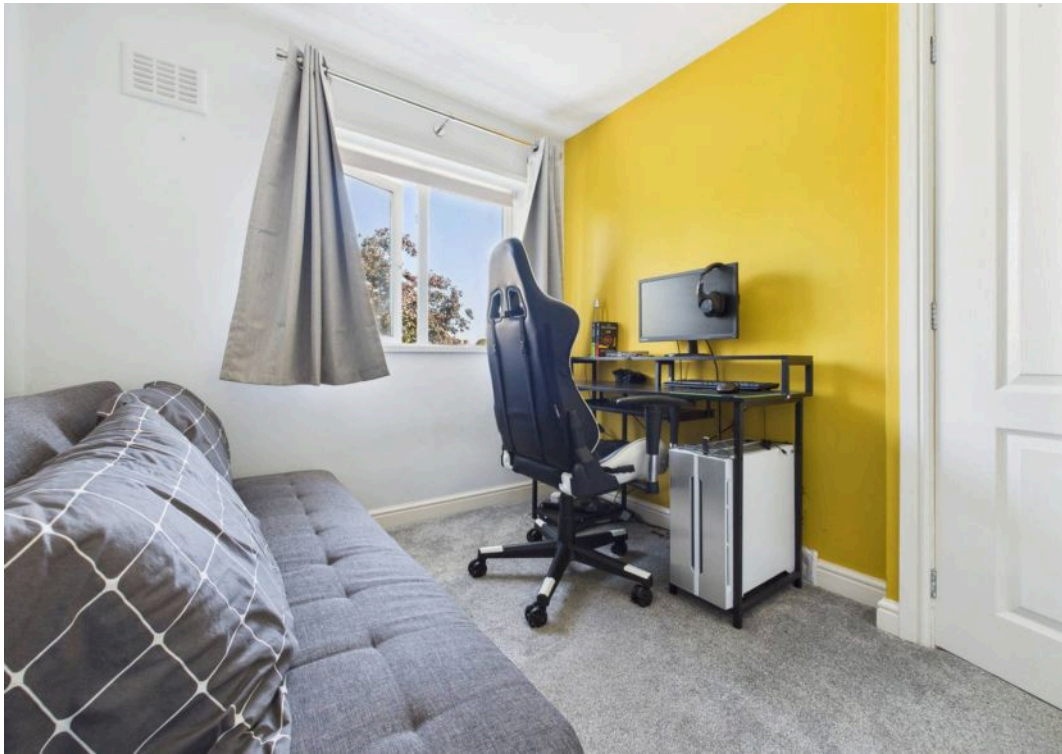
EPC Energy Efficiency Rating: D

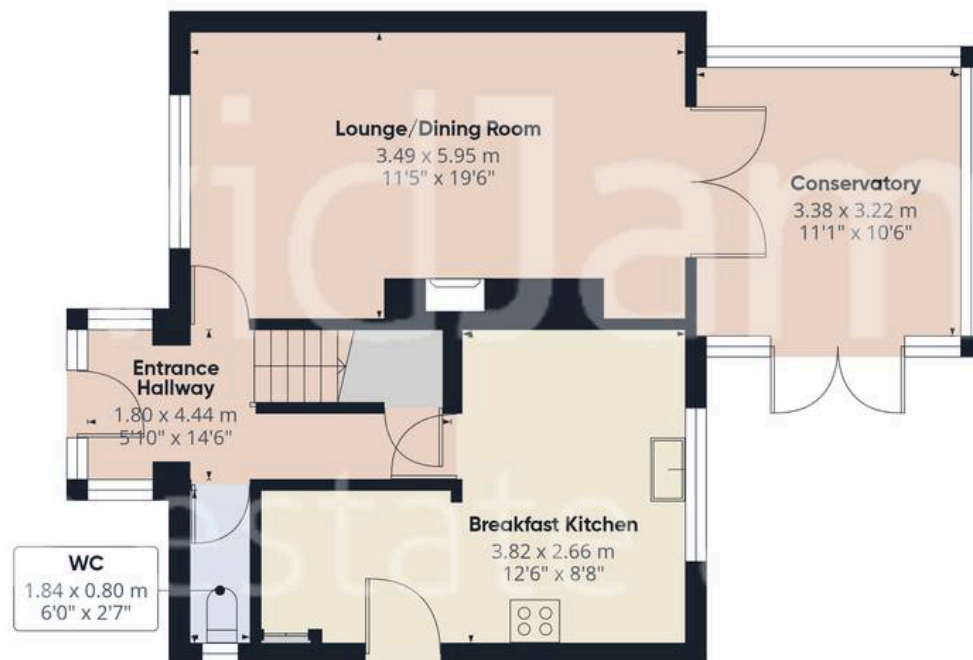
EPC Environmental Impact Rating: D

- Spacious semi-detached family home in the ever-popular Calverton
- Close to sought-after schools, shops, golf courses and transport links to Nottingham City Centre
- Bright entrance porch and welcoming hallway
- Generous lounge/dining room with a feature gas fire
- Versatile conservatory with French door garden access
- Modern fitted breakfast kitchen with dining space and space for freestanding appliances
- Four good-sized bedrooms with a variety of in-built wardrobe/storage solutions
- Contemporary family bathroom with a three-piece suite plus twin-head overbath shower
- Partially boarded loft with insulation, a drop-down ladder and lighting
- Attractive and private rear garden with patio, lawn, mature trees and barked play area

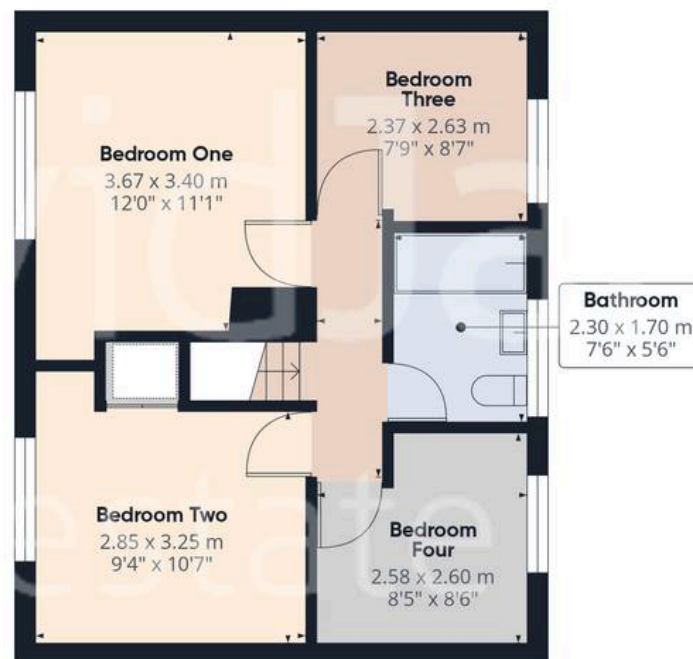








Floor 0



Floor 1

Approximate total area⁽¹⁾

96.5 m²

1038 ft²

(1) Excluding balconies and terraces

Calculations reference the RICS IPMS 3C standard. Measurements are approximate and not to scale. This floor plan is intended for illustration only.

GIRAFFE360



David James Estate Agents

98-100 Front Street, Arnold - NG5 7EJ

0115 955 5550 • arnold@david-james.com • www.david-james.com

These particulars are produced in good faith and are set out as a general guide only. Measurements are approximate and floor plans are for illustrative purposes only. Services have not been tested. We have established professional relationships with third-party suppliers for the provision of services to Clients, details of which can be found on the property listing page on our website.