



7 Parkwood Gardens, Broxburn

Offers Over £220,000





The town of Broxburn is well placed for commuting with easy access to the M8/M9 motorway network for travel throughout the central belt and beyond. Local buses link up the surrounding towns and villages whilst the railway station in nearby Uphall Station provides a regular service to both Edinburgh and Glasgow. Edinburgh Airport is within easy reach. Further shopping and recreational facilities are available in nearby Livingston, where The Centre, The Elements and the Designer Outlet have many high street stores, restaurants, a health club and a multi screen cinema. Alternatively, The Gyle Centre in Edinburgh is a short drive away.

Presenting this beautifully crafted three-bedroom semi-detached house, this property offers a fantastic opportunity for a chain-free purchase. Boasting a contemporary designed kitchen, the heart of the home welcomes you with its sleek finishes and modern amenities. The open-plan living and dining area creates a seamless flow, featuring patio doors that lead to the rear garden.

Featuring a sleek and stylish walk-in shower room, the property exudes sophistication and style. As you make your way through the residence, ample storage can be found, catering to your organisational needs effortlessly. The inclusion of a monoblock driveway and garage enhances the convenience for parking options, perfectly complementing the ease of every-day living.

The fully enclosed rear garden provides a private outdoor space for activities and gardening endeavours.

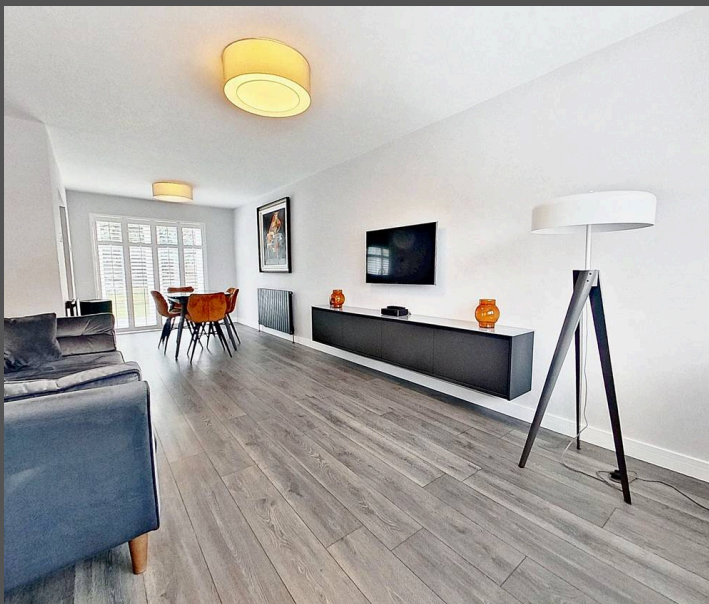


7 Parkwood Gardens

Broxburn, Broxburn

- Brilliantly Presented Three Bedroom Semi Detached House
- Chain Free Purchase
- Contemporary Designed Kitchen
- Open Plan Living/Dining Area With Patio Doors Leading To The Garden
- Sleek And Stylish Walk In Shower Room
- Monoblock Driveway And Garage
- Fully Enclosed Rear Garden
- Ample Storage Throughout
- Nestled Within A Popular Residential Area

This beautifully crafted 3-bed semi-detached house offers chain-free purchase. Contemporary kitchen, open-plan living, sleek shower room, ample storage, garage, monoblock driveway, enclosed garden. Modern living with functional design elements - ideal for comfortable, stylish living.







KnightBain Estate Agents

Knightbain, 4 Greendykes Road, Broxburn – EH52 5AG

01506 852000

info@knightbain.co.uk

www.knightbain.co.uk/

