



Flat 11, 9 Havre des Pas, St. Helier, Jersey
£2,100 PCM

BROADLANDS
FINDING YOU A HOME SINCE 1972

Flat 11, 9 Havre des Pas

St. Helier, Jersey

- Let fully furnished
- Rent is inclusive of all utilities & parking space nearby
- 1 double, 1 single bedroom
- Convenient location, close to shops, town & walks
- Entitled/Licensed housing qualifications required
- Close to the beach & Lido
- Private outside space & terraced communal sitting area
- 12 month lease
- Not suitable for pets
- Please contact the rentals team on 880770 or rentals@broadlandsjersey.com



Flat 11, 9 Havre des Pas

St. Helier, Jersey

A charming 2-bedroom flat is available to rent fully furnished in a prime location. This property boasts a double and a single bedroom, making it ideal for a small family or professionals seeking extra space. The rent is inclusive of all utilities and includes a nearby parking space, ensuring convenience for residents. Situated close to shops, town amenities, and scenic walks, this flat is perfect for those looking for accessibility and comfort. Regretably the property isn't suitable for pets. Its close proximity to the beach and Lido add a touch of leisure to this well-appointed residence.

Step outside to discover a private suntrap garden at the rear of the property, providing a serene retreat for outdoor relaxation. Additionally, residents can enjoy a terraced communal sitting area, perfect for socialising or unwinding amidst green surroundings. A parking space for one car is included with the rental, located conveniently near the flat.





Sleeping

1 good size double bedroom & 1 single bedroom

Living

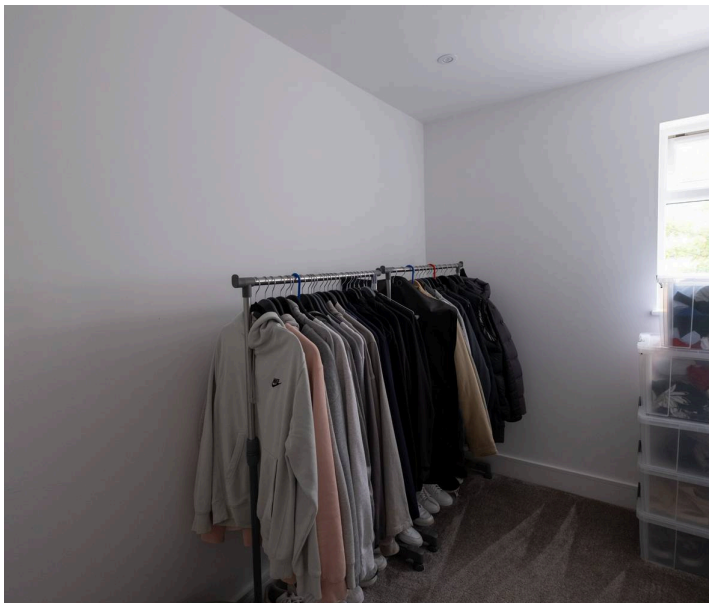
Entrance area with corridor leading to the living room/kitchenette. The airing cupboard provides extra storage.

Outside

Private, sunny outside space to the back of the property, with added benefit of a terraced communal sitting area.

Services

All utilities & parking space for 1 car are included with the rent. The apartment is rented fully furnished.





GROUND FLOOR
482 sq.ft. (44.8 sq.m.) approx.



TOTAL FLOOR AREA : 482 sq.ft. (44.8 sq.m.) approx.

Whilst every attempt has been made to ensure the accuracy of the floorplan contained here, measurements of doors, windows, rooms and any other items are approximate and no responsibility is taken for any error, omission or mis-statement. This plan is for illustrative purposes only and should be used as such by any prospective purchaser. The services, systems and appliances shown have not been tested and no guarantee as to their operability or efficiency can be given.
Made with Metropix ©2025



Broadlands

Broadlands Estates, Library Place - JE2 3NL

01534 880770 • enquiries@broadlandsjersey.com • www.broadlandsjersey.com/

BROADLANDS

FINDING YOU A HOME SINCE 1972